

BHASVIC

BRIGHTON HOVE AND SUSSEX SIXTH FORM COLLEGE



FOR STUDENTS STARTING IN SEPTEMBER 2018

Open Evening

Wednesday 15th November, 6:30pm – 9:00pm

Thursday 16th November, 6:30pm – 9:00pm

Apply to BHASVIC online at www.bhasvic.ac.uk

For more details about applying, see page 125

Welcome to BHASVIC

BHASVIC is a fantastic place to come to learn and study where you will enjoy being part of a vibrant community. We are a college with traditional academic roots, but as you will see from this prospectus and when you come to visit BHASVIC, we are also a modern and forward thinking college offering a variety of qualifications. We are a place where everyone is treated as an individual and where your future success is our priority.



You will see on the following pages evidence of our success (six reasons to make BHASVIC your sixth form) and I want to briefly outline why I think BHASVIC students are so successful. There is a learning culture here at BHASVIC that is evident wherever you go – we have an aspirational culture and expect students to perform above their potential. You will always be taught by experts whose focus is solely on teaching 16-18 year olds A level and BTEC courses. Your teachers will be highly qualified and both passionate about their course and about teaching you in innovative and engaging ways. You will be taught more than just course content; we will ensure you develop the skills you need to be an independent, lifelong learner with the ability to think for yourself. On top of this, our first-class student services and guidance staff will ensure you are well supported at every step of the way. All of this culminates in outstanding results and ensures that you develop the necessary skills and experiences to be successful in whatever you decide to do next.

Sixth form colleges like BHASVIC are a brilliant stepping stone between school and university or the workplace. You will be treated like an adult and teachers will work with you as a co-creator of your own learning. You will have chosen courses that you find interesting and exciting and that will help shape what you want to do after BHASVIC. Whilst here you will belong to a thriving community with extensive opportunities outside of the classroom to make new friends, take part in enrichment activities or go on some of the many educational trips we offer.

We are a contemporary creative learning community and I look forward to you being a part of this when you start in September 2018.

William Baldwin
PRINCIPAL

Contents

SIX REASONS TO MAKE BHASVIC YOUR SIXTH FORM	4
BHASVIC – A CONTEMPORARY CREATIVE LEARNING COMMUNITY	6
WHAT IS SPECIAL ABOUT SIXTH FORM COLLEGES?	8
AN ALL-ROUND EDUCATION: COURSES, SKILLS, VALUES, BREADTH	9
BHASVIC: ASPIRATIONAL STANDARDS	10
YOUR STUDY PROGRAMME	12
ENTRY REQUIREMENTS	14
VOCATIONAL AND PRACTICAL PROGRAMMES	15
DEDICATED SUPPORT FOR YOUR SIXTH FORM STUDY	16
RESOURCING YOUR LEARNING	20
GETTING INVOLVED IN WIDER OPPORTUNITIES AT BHASVIC	21
ADDITIONAL LEARNING SUPPORT	26
ENGLISH AS SECOND OR OTHER LANGUAGE (ESOL)	26
THE STUDENT UNION	27
AFTER BHASVIC – WHERE NEXT?	30
COURSE INFORMATION PAGES	34
SECOND YEAR PORTFOLIO COURSES	122
APPLYING TO BHASVIC	125
COURSE LIST	128





Six reasons to make BHASVIC your sixth form

TOP EXAM RESULTS

BHASVIC is the only college in the top five colleges nationally for both exam results and 'progress' outcomes which measure the value we have added to your learning.

EXCELLENT SUPPORT

First class student services and academic support, along with dedicated tutorial pathways.

SATISFACTION

95% of students are satisfied with their experience at BHASVIC; 94% of staff would recommend BHASVIC as a good place to work.

FUTURE READY

87.5% of BHASVIC students who go on to a degree gain a 1st or 2:1 – well above national average for both state and independent schools.

CHOICE AND FLEXIBILITY

Great range of courses – specialise or keep your options open! Over 40 subjects allowing well over 20,000 combinations of courses.

CULTURE

A learning culture ensures students work hard, enjoy studying and make the most of social and enrichment opportunities.

Ofsted Outstanding

BHASVIC was awarded a grade 1 Outstanding by Ofsted in 2012. A link to the full report can be found on our website or by visiting: www.ofsted.gov.uk.

Grade 1 Outstanding was awarded to **all four** inspection areas:

Outcomes for Learners, Quality of Teaching, Learning and Assessment, Leadership and Management and Overall Effectiveness.

We are very proud of these achievements and applicants to the college can be assured that we are committed to becoming even better.

Ofsted monitor our Progress and Development Plan and will only return if they think we aren't Outstanding any longer. Since this inspection, student outcomes have improved still further year on year!

CONTEMPORARY CREATIVE LEARNING COMMUNITY



CONTEMPORARY

Although our roots are as an old Grammar School there is a modern feel to BHASVIC. You may have noticed our new branding which has taken inspiration from the city crest 'Between the Downs and Sea we flourish' and our new website which we hope is more stimulating and accessible. When you come to visit you'll see that we've refurbished some of our accommodation to create a more up-to-date and student friendly environment. More than that, our approach to teaching, learning and assessment is innovative and forward thinking to ensure you receive the best experience possible.

CREATIVE

Learning is a creative process, teaching is a creative job, our students are creative people and Brighton is a creative place! We want to encourage creative, innovative and collaborative approaches to all that we do. That includes creative approaches to engaging you both inside and outside the classroom and allowing our teachers the freedom to innovate and experiment with the best ways of doing this. At BHASVIC you will be as well prepared as you can be to meet or surpass your potential.

LEARNING

Learning is at the heart of what we do. There is a learning culture at BHASVIC where it is acceptable amongst students to be seen to be doing well, to be working hard and developing a love of your courses and of learning. This phase of study is amazing – you will learn about your courses to a level of depth that will be both fascinating and challenging and you will begin to know and understand more than you could imagine possible about them and indeed the world. At BHASVIC you will begin to feel like a true expert in your chosen courses.

COMMUNITY

We are an inclusive and accepting college where every individual feels part of a community and has a sense of belonging. At BHASVIC you will also have opportunities to engage with the wider community to help raise standards and aspirations, for example by joining in with our scheme of listening to primary school children read or to raise money for local charities at one of our Student Union events.

What is special about Sixth Form Colleges?

Sixth form colleges are the home of dedicated 16-18 education, facilitating the best post-16 academic provision and outcomes with a reputation for inspiring and nurturing a love of learning and high academic achievement.

Sixth form colleges are responsible for over a fifth (22%) of the A levels delivered in England each year and help their students to achieve better exam results than all other non-selective providers.

Sixth form colleges are specialists focusing their entire staffing and resources on delivering 16-18 education with teaching, learning and pastoral care specialised for this age group.

Sixth form colleges provide exceptional support and resources for preparing for adult life, including applications to university and careers advice.

Students educated at a Sixth form college achieve a higher A level point score per entry than school sixth forms.

Students (including disadvantaged students) educated at a Sixth form college are more likely to progress to a UK university, are more likely to continue into their second year and are more likely to progress to the most selective institutions than students educated elsewhere in the state system.

Students attending Sixth form colleges who wish to progress to employment after completing their studies are more likely to do so than those at other state schools or colleges.

An all-round education: Courses, Skills, Values, Breadth

Our mission at BHASVIC is to ensure that you receive an all-round education that prepares you to be an independent lifelong learner. We want you to make the most of the opportunities available here that will enable you to realise your potential.

COURSES

A levels and BTECs (along with English or Maths GCSE for those who need it) will form the foundation of your timetable at BHASVIC. Learning here will go deeper than the course content you are required to know – doing well at this level requires you to be able to manipulate knowledge which means you have to understand it. We ensure you will develop the skills to be able to do this.

SKILLS

Learning how to learn requires that you have the study skills and abilities to know how to manipulate knowledge, solve problems and make connections. On top of that it involves knowing how to manage your time and work independently. We will help you reflect on your studies and your progress and identify skills you need to develop, not just to ensure you do well in your courses but so that you are well prepared for your future as a lifelong, independent learner. In part we do this using our 6 R's initiative – that students are Reflective, Resilient, Resourceful, Respectful, Responsible, Risk-takers. Your lessons will also involve learning independently, learning with others and receiving individualised academic support from your teachers.

VALUES

We want to ensure that you leave here informed and aware of your role as a citizen at local and national level as well as in the wider world. At BHASVIC you will belong to a community where you can develop your own values of democracy and freedom of speech through discussion and debate. You will have the opportunity to join college societies outside of your lessons whilst within tutor groups you will follow carefully tailored sessions to develop your thinking and understanding of issues.

BREADTH

We want to ensure that your learning stretches over a number of domains, whatever the focus of your course combinations. There is an incredible array of smaller, shorter portfolio courses from which to choose in your second year, including the Extended Project. These short courses are designed to help you specialise further and build your CV in a course or career focus of your choice. Our enrichment opportunities add breadth to your time here and you can read more about 'Getting involved' on page 21.



Aspirational Standards

We set aspirational standards at BHASVIC and we want you to outperform even your own high expectations. There is great satisfaction in doing something to the best of your ability, to do something that is difficult and to master it. Importantly, here at BHASVIC we recognise that struggling can be part of the learning process and we provide an environment where it is safe to do that, ensuring no one

is left to struggle on their own. This is because you have to feel safe to take risks and mistakes are a trigger for new learning. Therefore, whilst there are high standards here, it is a safe environment, not a threatening one, to try, to fail and to learn from that. It's a 'high challenge, low threat' approach to your learning.

Your Study Programme

A study programme is all the formal activities that you take at the college consisting of:

- A levels, BTECs and GCSE qualifications
- Tutorial Programme: Lessons and one-off events covering careers preparation and Higher Education applications, study skills, citizenship and personal wellbeing
- Portfolio courses: Additional one year courses, normally taken in the second year, that extend your practical or academic studies in areas where you are interested
- Subject Extensions: Support sessions run by teachers to help you with specific areas in the courses you study
- Enrichment: Extra activities such as sport, performing arts, Duke of Edinburgh, community and charity work, clubs, societies, visual arts, mathletes... these are not compulsory but we actively encourage students to take part

The majority of students will take three A levels or equivalent (such as a combination of BTECs and A levels) at BHASVIC. This forms the core of our standard study programme as it does nationally at this level and is the normal requirement for entry to Higher Education. It is possible to take four A levels here, most commonly Double Maths alongside two other subjects. We will discuss whether four A levels is appropriate with applicants individually at interview. Some students may qualify to come to BHASVIC yet will also need to re-sit English or Maths GCSE which can be done alongside the main elements of a study programme. Examples of study programmes can be seen on the opposite page.

All A level qualifications are delivered over two years. Some have a coursework element (no more than 20%) with final exams at the end of two years. BTEC qualifications are assessed over time through ongoing assignment work with some externally assessed content.

AS levels are no longer taken as part of the A level qualification at BHASVIC. If a student does not continue with a course into the second year a small number of AS level and BTEC Certificate courses are available as recovery courses to complete within the second year to ensure a qualification is gained.

Specific GCSE grades are often required for certain courses. These are shown on the relevant prospectus page and may be found on the college’s website: www.bhasvic.ac.uk

If you are an EU resident and have not attended an international school you will be required to have an IELTS Academic score of 5.5 in order to take any Level 3 course at BHASVIC.

BHASVIC works closely with our partner Further Education colleges in the Brighton & Hove Colleges’ Accord. Our partnership works to promote the joint planning of recruitment, curriculum and services to meet the needs of the city’s young people. To apply to BHASVIC use the online Accord common application form: www.bhasvic.ac.uk

Examples of Study Programmes

	SUBJECT 1	SUBJECT 2	SUBJECT 3	ADDITIONAL
YEAR 1	French A level	Drama A level	Media A level	Tutorial, Performing Arts Enrichment
YEAR 2	French A level	Drama A level	Media A level	Tutorial, Performing Arts Enrichment

	SUBJECT 1	SUBJECT 2	SUBJECT 3	SUBJECT 4	ADDITIONAL
YEAR 1	Double Mathematics A level		Biology A level	Chemistry A level	Tutorial, Chemistry Olympiad
YEAR 2	Double Mathematics A level		Biology A level	Chemistry A level	Medicine Tutorial Pathway, Extended Project

	SUBJECT 1	SUBJECT 2	SUBJECT 3	SUBJECT 4	ADDITIONAL
YEAR 1	Sport BTEC Diploma		Photography A level	GCSE Maths	Football, Tutorial
YEAR 2	Sport BTEC Diploma		Photography A level		Football, Tutorial, Community Sports Leadership

Entry Requirements

Typical BHASVIC programmes: Level 3

3 A LEVELS

A minimum of five C/4 grades and one B grade, or grade 5, at GCSE. This must include a minimum of grade C/4 in English Language or Maths GCSE.

4 A LEVELS

A minimum of four A*/8 grades and three A/7 grades in seven different GCSEs, including a minimum of grade B/6 in Maths and English Language GCSE.

VOCATIONAL LEVEL 3

(ALL A LEVEL EQUIVALENTS)

Five GCSEs at grade C/4 or above in at least four subjects. This must include a minimum of grade C/4 in English Language or Maths GCSE. Students may study a double diploma and a single A level or two single diplomas and one A level.

Students who have not already achieved grade 4 (C) in English and/or Maths GCSE must continue to study for these alongside other courses.

NOTE: Students studying Double Maths may wish to take two additional courses alongside their Maths, to enable them to acquire three different courses for application to university. We will discuss this with applicants individually at interview but as a guideline, we would advise having a minimum of four A/7 grades and three B/6 grades at GCSE to study Double Maths and two other A levels.



Vocational and Practical Programmes

We offer a range of vocational and practical courses which provide a skills-based approach to learning through practical assignments linked to real life experiences and working life. These qualifications are highly valued by employers and Higher Education institutions alike. Outcomes are graded as Distinction*, Distinction, Merit and Pass and have an equivalence to A levels for those seeking entry to University. An increasing number of students nationally are applying to University with a combination of A level and BTEC qualifications.

BTEC: COURSE	= 1 AS LEVEL	= 1 A LEVEL	= 2 A LEVELS	= 3 A LEVELS
Business	✓	✓	✓	
Creative Digital Media Production		✓	✓	
Computing		✓	✓	
Health and Social Care		✓		
IT		✓		
Law (Applied)		✓		
Music		✓		
Performing Arts		✓		
Sport	✓	✓	✓	✓
Sport and Exercise Sciences		✓	✓	✓
Duration	1 year	2 years		

Dedicated support for your sixth form study

TUTORIAL

At BHASVIC you will be assigned a Personal Tutor right from the very start of your studies and you will become part of a Tutor Group of about 20 students. Your Personal Tutor will be a guide and mentor, keeping an eye on your progress, offering you support, sign-posting help and encouraging you to take responsibility for your learning and your future. Tutor sessions take place once a week and are located in our Student Services building which also hosts a range of specialist support from careers and work experience advisers, bursary advice, welfare and counselling.

BHASVIC's tutorial programme is carefully designed to support you on your educational journey, from settling into your new environment, all the way through to leaving college and starting your next steps in continued education or employment. Tutor sessions are used for one-to-one discussions, as well as whole group activities to support your wider development. Your Personal Tutor will provide outstanding information, advice and guidance to you each step of the way and will help you make the most of your time by informing you of the huge range of opportunities available to you outside lessons.

SUBJECT REVIEWS, SELF-REFLECTION, TEACHER ASSESSMENTS AND PARENTS' EVENINGS

New students receive an online log-in early in September and are able to keep track of their progress in terms of attendance, target grade and support plans through their personalised online account. Parents can also track progress online and through termly Subject Reviews. These give students a regular opportunity for self-reflection on their performance across all courses, and enables students and parents to see feedback from staff and an overview of progress. There are three Parents' Evenings in the first year which offer parents the chance to meet with the personal tutor and courses teachers.

PATHWAYS

In your second year at BHASVIC you will select a specialist tutorial pathway to support your study and lead you towards the career or course that you want to follow after BHASVIC.

The Pathways are:

- Oxbridge or Medical and Veterinary Careers (see page 17)
- Work Experience / Apprenticeships / Progression Options (see page 18)
- University (UCAS) and Higher Education (H.E)
- Visual Arts applications
- Support (for students receiving specialist / curriculum support)

You will construct a study programme which reflects and supports your developing career aspirations, making up your timetable to include a portfolio course drawn from a range of options or significant work experience with an employer.

EQUALITY, DIVERSITY, INCLUSION

We are happy to be a college with a diverse group of students, committed to providing equal opportunities for all members of our community. Relationships between students and college staff are good. You are respected and treated as an individual in an adult atmosphere. We will treat you fairly and without prejudice in every aspect of college life.

BHASVIC actively pursues its Equality and Diversity Policy and is committed to safeguarding and promoting the welfare of learners and expects all staff and volunteers to share this commitment. When you first arrive at BHASVIC we will help you to feel at ease. Each course will start with an induction period to help you to recognise what is being asked of you, and to move you up to a new level of work and understanding.

Our students tell us they like the informal but purposeful atmosphere in the college, and having more independence than at school. Teachers treat you as a young adult who takes responsibility for themselves and their work, but who may require support and guidance to achieve this.

UNIVERSITY APPLICATIONS

Described as 'outstanding' by OFSTED in 2012, the support we offer students applying to university runs from the first thoughts a student might have about studying in Higher Education right through to advice about how to budget your student loan and deal with landlords! You are given extensive help by your Personal Tutor with research into universities and courses and are encouraged to approach this with an open mind.

The tutorial programme is structured to help you begin making decisions and understanding your options from early in the first year of your study at college. There is detailed support for you in preparing your application and writing a personal statement.

Your Personal Tutor will check your progress in applying every step of the way and will guide you to making informed and successful choices. Parents and carers are also supported via specialist links on our website and through Higher Education Information Evenings in the Spring term of the first year.

Destinations data (available on the website) shows the extremely successful start that BHASVIC gives to students who study a degree. The excellent degree completion and achievement rates place our students among the top achievers nationally, compared with independent, sixth form college and state schools.

SPECIALIST TUTORIALS FOR OXBRIDGE, MEDICAL AND VETERINARY CAREERS

BHASVIC offers a comprehensive programme of guidance for students who wish to apply to Oxford and Cambridge universities or pursue Medical Careers. Support and advice is available from the moment you enrol at BHASVIC. There are regular trips to Oxford and Cambridge universities plus visits to our college by key Oxbridge staff. Specialist Oxbridge Tutor Groups in the second year also help you with the specialised application procedure. **Thirty-seven students gained places at Oxford and Cambridge in 2016!**

Our Medical and Veterinary programme will help you select appropriate courses, navigate the application procedure and build a relevant work experience portfolio. We will coach you for interviews and help you prepare for the UKCAT and BMAT entrance exams. There are opportunities to participate in relevant conferences and residentials. There is an outstanding success rate for this programme and twenty-seven students gained places in Medicine, Dentistry or Veterinary Science in 2016.

UNIVERSITY STUDY ABROAD

BHASVIC enthusiastically offers support to students who wish to study overseas. In particular the college has outstanding links with leading US universities, the Heads of Harvard and Yale International Applications departments visit BHASVIC and our staff have undertaken residential visits to Rutgers and Yale. The leading universities of the Netherlands also visit BHASVIC every year, conducting Information Evenings for parents and students in the Autumn term and work closely with the college to support applications.

VISUAL ARTS FOUNDATION AND HIGHER EDUCATION COURSE LINKS

Whether applying for a foundation course, a foundation degree course or a BA honours degree, our specialist tutorial programme provides information, support and advice on the types of courses available, the visual arts application process, interview techniques and portfolio preparation.

APPRENTICESHIPS AND EMPLOYMENT

BHASVIC's Guidance and Student Services team provides excellent support for students who are interested in moving onto an apprenticeship or gaining direct employment when they leave college. We have strong links with local training providers who come into college to explain apprenticeships and how to be successful in achieving a placement. We work with local employers to give students advice on job applications, CVs and interviews and we arrange visits to their workplaces. In the second year students can opt into a specialist tutorial programme which focuses on developing these opportunities and achieving a successful, extended work experience placement of at least 25 hours. Personal Tutors and Careers Advisers provide outstanding guidance in group settings and one-to-ones and make use of the excellent resources available in our careers area and through our Virtual Learning Environment.

WORK EXPERIENCE

While you are at BHASVIC we think it is really important you are given a chance to explore your career ideas so you can get a better understanding of yourself and the world of work. Work experience is one way to do this. You can undertake a placement anytime at BHASVIC; whether it is over the college holidays, to fit in with your timetable or during the last week of the summer term. Whatever you choose, we can help you to find a placement and once one has been found, we will work with you to ensure that you get the best from the experience.

WIDENING PARTICIPATION

The college works closely with Brighton and Sussex universities to encourage students from non-traditional backgrounds to progress into Higher Education. This includes organising university open days, course-specific taster days, personal statement and interview support and giving information, advice and guidance on possible extra funding or support available. Over half our first year intake qualified for some sort of Widening Participation scheme in 2016-17 and we have an outstanding reputation for our work in this field, leading the way in best practice and sending regular newsletters home to ensure there is support for parents and carers too.

CAREERS

The Careers Suite provides access to up-to-date information about local full-time and part-time job vacancies; local colleges and national universities and Music, Dance and Agricultural colleges; careers, gap years, voluntary work and working abroad. Two dedicated Careers Advisers provide free information, advice and guidance on your transition from college to Higher Education or work; planning your next steps and exploring career ideas; help with CVs and filling in forms; interview techniques and money matters.



STUDENT SERVICES

The Student Services Team at BHASVIC is here to support all our students and help them achieve their goals during their time at college. We provide information, advice and guidance services in Financial Support; Travel; Welfare; Careers; Work Experience and Widening Participation.

COUNSELLING

The college employs qualified Dialogue Counsellors. You can discuss your feelings, thoughts and any worries you may have concerning such things as college work, relationships and home life, in a confidential and informal setting.

WELFARE

The Welfare Co-ordinator at BHASVIC offers advice on the financial support available to our students, including 16-19 Bursaries. We provide extensive information on travel to BHASVIC and the various discount schemes that are available for bus and train. You can access information and support on a wide range of issues such as sexual health, anxiety and stress, alcohol, substance misuse and relationships.

The college runs various events and activities throughout the academic year linked to National Awareness Days and provides a wide range of information on a variety of welfare topics within the Student Services Centre.

CHARGES AND ASSISTANCE (SEE WEBSITE FOR FURTHER INFORMATION)

The 16-19 bursary is aimed at providing the most vulnerable young people with a specific level of financial support.

The college is able to use its discretion to award monies from the Bursary Fund in ways that best fit the needs and circumstances of individual students. This could include providing help with travel, books or other course related costs.

BHASVIC will look to target support to those young people facing the greatest financial barriers to participation e.g., to a student's family who received free school meals, those on a means-tested benefit or who fall into a priority group.

Application forms are available from the Student Services Centre from August 2017.

Resourcing your learning

The college has a range of facilities to help you to work, in addition to your timetabled lessons. Our well-equipped library provides a superb silent environment for independent study and research facilities with a wide range of reference works, text books, journals, newspapers and computer access to on-line journals and media. Computer printing and photocopying facilities are available and the Librarians will help you to make the best of the resources available. Library staff provide advice and support with research and study skills.

IT FACILITIES

The Student Learning Centre is equipped with forty-five computers and students can use this space for studying and research on a drop-in basis. Other IT facilities are spread throughout the college. BHASVIC wi-fi supports access via your own personal devices.

SPECIALIST CURRICULUM FACILITIES

The college Sports Hall and Dance Studio are specialist facilities. The Science Departments have well equipped laboratories dedicated to their specific science and excellent technical support for individual practical work. Modern Languages' students use the Language Centre's digital facilities to improve their speaking and listening skills. There are three large Art studios, two large Photographic Studios and a walk-in dark room. The Theatre has a 100 seat-capacity and there are five music rehearsal rooms alongside the main Music teaching room. Media and Film have a fully equipped editing suite, with high-spec macs and software.

Excellent new facilities with catering provision, Additional Learning Support and student social space can be found in the Copper Building along with a large drop-in Study Support and group study area.

Getting Involved in wider opportunities at BHASVIC

BHASVIC offers students numerous opportunities beyond their academic courses. At the BHASVIC Enrichment Fair in September each academic year, you can choose from and sign up for an exciting array of options:

- Day and residential trips in the UK and abroad.
- Clubs and short courses which may introduce you to a new skill or be purely recreational, for example, Creative Writing, Journalism or BHASVIC TV;
- Societies such as the Feminist Society (FemSoc), LGBTU, charities, pressure groups, faith or party political based groups;
- Regular visits from high profile speakers as well as local and national MPs;
- Sport, Music, Drama, Creative Arts;
- Specialist career areas such as support for Oxbridge, Medicine, Visual Arts and international university applicants. BHASVIC students are also successful at gaining places at universities overseas;
- Work experience including work placements abroad. We have specialist staff who can assist you in organising this.

PLAYING SPORT

Our Sports Centre includes a large Sports Hall, Dance Studio, courts, fields and fitness teaching facility.

If you take your sport seriously you can opt to take part in a wide range of team sports including Basketball and Football for both men and women or teams for Rugby and Netball. Many of our students have gained county or national honours and we are proud of the success of our teams in competitions. If you are keen and talented in your sport, the college offers coaching and qualifications in several sports, which can be taken in addition to you academic courses. If your interest is more for fun or keep-fit purposes, we offer plenty of opportunity to participate and run a different sporting activity every lunchtime, including Yoga for girls and Dance sessions.

Last year our ladies Football team reached the national final of the FA Colleges Cup making it down to the last two from over three hundred teams who entered!



PERFORMING ARTS

Every year, BHASVIC stages professional quality theatrical and musical productions. The Music department's Christmas concert is always a showcase of eclectic performances of talented students. Last year students involved in Music and Drama enrichment combined their talents to stage an epic production of *Evita*, the hit musical by Andrew Lloyd Webber and Tim Rice chronicling the life of the Argentine political leader Eva Peron. Audiences in this sell-out production were wowed by the considerable talent of both the actors and musicians. You don't have to take Drama or Music to be involved in productions – anyone can take part!

CREATIVE ARTS AT BHASVIC

BHASVIC's Creative Arts Festival takes place every year in the Summer Term after the exams have finished. Celebrating the success of students who have been involved in Creative Arts courses, our Creative Arts Festival includes:

- **BHASVICTORS** – A celebration of moving image produced by students from Communications and Culture, Media and Film Studies.
- **InMotion** – Drama and Dance students also provide a stimulating evening of contemporary dance.
- **The Beards** – Celebrating the best pieces of written work produced throughout the year by students in the English Department.
- **The Visual Arts** – The department becomes a gallery of student work with their annual exhibition of Art, Photography and Textiles.
- **Cafe Culture** – The Music department invites everyone to sample a summer evening of music to chill to.

DUKE OF EDINBURGH'S AWARD SCHEME

Be aspirational and challenge yourself! At BHASVIC, students can work towards the Duke of Edinburgh's Gold Award. With its five sections (Volunteering, Physical, Skills, Expedition and Residential) the Award is a wonderful opportunity to challenge and develop yourself outside the classroom. It is easy to see why it is so highly valued by universities and employers.

The Award scheme is run by BHASVIC. You will meet for one session a week with a group of students and a member of staff to plan your award activities and review your progress. You will practise for the Expedition through a training day in Sussex to hone your map and compass skills before completing the Practice and Qualifying Expeditions later in the year in Snowdonia and the Lake District. You will need suitable footwear and clothing for hiking, but tents and other expedition equipment can be borrowed free of charge.

WORLD CHALLENGE EXPEDITIONS

For those seeking adventure further afield, World Challenge expeditions combine both the physical challenge of trekking with community and conservation work with some much needed time for rest, relaxation and sightseeing. These expeditions can last up to one month and allow you the opportunity to lead and play a part in the decision-making of what you do and how you budget for it. They often involve significant time away from the mod-cons of phone reception, wi-fi, electricity and running water, allowing you to experience life from a different perspective.

LISTEN TO CHILDREN READ SCHEME AND MATHS SUPPORT AT PARTNERSHIP SCHOOLS

Gain highly regarded skills and give something back to the community by taking part in BHASVIC's partnership work with local primary and secondary schools. As an A level student, and possibly someone considering working with children in the future, you can develop your own skills whilst helping the younger generation with theirs. A highly rewarding scheme to take part in, BHASVIC students are valued by schools and younger students alike.

TRIPS AND VISITS

A great number of trips were organised by departments at BHASVIC last year:

- Visual Arts – Barcelona in July
- Film & Media – Budapest in July
- Archaeology & Classical Civilisation – Naples in July
- Chemistry – Stemfest plus Sussex University Lab visits
- Creative Media Production BTEC - London Museum of Brands in February
- Dance - Akram Khan Dance Company ran a workshop for BHASVIC students in November
- Drama & Theatre – 'Things I know to be True' at Chichester Festival Theatre, 'King Lear' at Barbican Theatre and 'Blood Brothers'.
- Economics – Revision conference in Portsmouth
- Psychology & Sociology – Berlin in July
- Philosophy – Athens in April
- Geography – Croatia in July, New York in September.



Additional Learning Support

Support for students with SEND is referred to as 'Additional Learning Support' at BHASVIC and is available for all students who require some help and guidance with their learning. We aim to work with you to make sure you have every opportunity to achieve your potential.

We provide a range of support that is tailored to suit the needs of the individual student. Students can bring work related to their studies including coursework and address their difficulties with the help of Additional Learning Support Teachers. Support can include help with essay writing, effective note-taking and organisational skills. We also provide support for Maths and English GCSEs and preparation and practice for exams.

OTHER SUPPORT

In-class support is sometimes provided to students who have significant needs. Assistive technology can be provided to help students access learning, where assessments demonstrate need.

EXAM ARRANGEMENTS

If you have had Access Arrangements and/or Reasonable Adjustments for Exams for your GCSEs we will assess you at the start of your course to see if you will continue to need these arrangements during your studies at BHASVIC. Our aim is to ensure that students develop the skills and strategies they need to manage their difficulties in preparation for a productive and fulfilling life.

If you have a specific learning difficulty (e.g., dyslexia) a sensory impairment, mobility problems or anything else that affects your learning, please let us know via the Admissions Department: **01273 859810** or **admissions@bhasvic.ac.uk**

English as Second or Other Language (ESOL)

We provide courses from beginners to pre-GCSE. All courses are full time and include ESOL, Maths and ICT. Students also have the opportunity to take Maths GCSE and Level 2 IT. Students will receive on-going support to help them achieve the qualifications they need for academic study or work.

ESOL classes run from September to June. They can be joined during the year if there are spaces available. If you would like to start in September applications need to be returned by the first Friday in December.

Once we receive your application we will invite you in for a short test and interview; this will help us to make sure we put you on the right course.

The Student Union

WHAT IS IT?

The Student Union comprises of 16 students (the Union Executive) who all have particular jobs to do, such as Entertainment Officer, Secretary, President, Welfare Officer, Communications Officer and Charity Officer. We are responsible for ensuring that your voice is heard. If you wish to contact us about anything at all you will find us in the Student Union office in the Refectory, or find us on any of our many social media such as Facebook and Twitter.

SO WHAT DOES THE STUDENT UNION DO?

Most obvious to the majority of students are the social events we organise, including several big parties every year. Freshers' Week comes first in September followed by Battle of the Bands in February as well as other events such as the Christmas Talent show, Christmas Quiz, Democracy Week and Leavers' Event, to name just a few.

We also speak to students on important issues - and act on them as well. For example, we have asked for changes to be made to the Teacher Cover policy, fed into discussions on how to improve the Learner Voice process and represented students on a range of committees from the BHASVIC Inclusivity Group (BIG), safeguarding team and the Governors' forum. We have run campaigns around improving toilet facilities and supplying a wider variety of food choices from the canteen. We also raise a lot of money for your chosen charities throughout the year.

IS THE UNION THE ONLY VOICE FOR STUDENTS?

No. There is also a Cross-College Council, with a representative from each Tutor Group to take concerns direct from you to the Union Executive in a half-termly meeting. Each curriculum class also elects a representative who will meet with other students from their course and a teacher to talk about how things are going and what improvements can be made.

HOW DO I GET ON TO THE UNION?

Stand in the election in March, run a poster campaign, speak at meetings, and get yourself voted on!



BHASVIC STUDENT UNION

BHASVIC STUDENT UNION

BHASVIC STUDENT UNION

BHASVIC STUDENT UNION

BHASVIC STUDENT UNION

BHASVIC STUDENT UNION

BHASVIC STUDENT UNION

BHASVIC STUDENT UNION

After BHASVIC – Where Next?

From your initial interview to regular meetings with your Personal Tutor, staff will carefully consider and plan how to facilitate your progression. We will encourage you to be aspirational and challenge yourself to do the very best you can in your exams and in your future career and life goals.

BHASVIC offers specialist progression support for Visual Arts students, Oxbridge students, Vets, Dentists, Medics, Musicians, those aiming for apprenticeships or direct employment after college, and students applying to foreign universities. Our progression advice and guidance is recognised as outstanding.

All students discuss their careers with their Personal Tutor as part of the weekly tutor programme and students are guided and encouraged in their use of resources, both in the Careers Suite and on the best websites to find out about Higher and Further Education courses, apprenticeships, employment, careers of interest and gap year projects.

Students leaving BHASVIC go on to university, into employment or take a gap year.

At BHASVIC, we consider our students' next steps to be of primary importance. In many ways, our students' destinations after completing their studies with us, and their achievements later on in their lives, are as important to us as the results they achieve while they are here. This is why we invest every effort in supporting our students to gain entry into their chosen destinations and to continue to achieve once there.

The impact of this investment in our students' futures comes from the Higher Education Statistics Agency (www.HESA.ac.uk). Here, statistics show how well BHASVIC students performed in comparison with other national providers of sixth-form education.

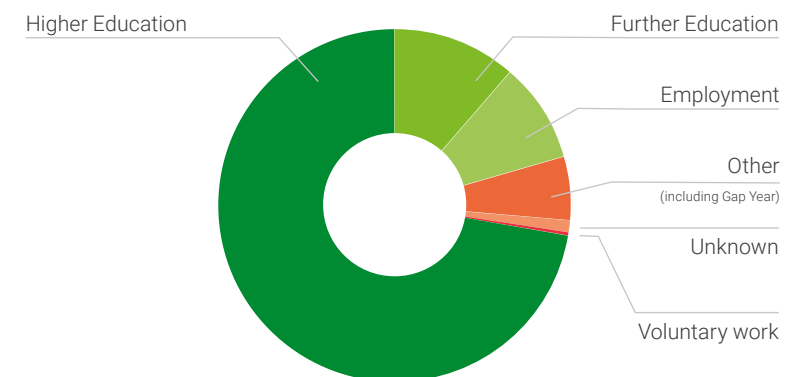
DEGREE CLASSIFICATION	1ST CLASS	1ST OR 2:1
BHASVIC	31%	87%
INDEPENDENT PROVIDERS	23%	80%
SIXTH FORM COLLEGES	24%	76%
ALL STATE PROVIDERS	23%	74%

The figures show that more than four in every five BHASVIC students who completed a degree achieved a 1st or a 2:1. This percentage is significantly higher than all other sectors, including the independent sector.

We believe that BHASVIC offers something unique; preparation in giving our students the independence to achieve at the highest level. More information can be gained about the success of BHASVIC students' destinations and achievement at the Open Evenings in November.

According to Cambridge University admissions 2015 data, BHASVIC is the third biggest provider of students to Cambridge University with 29 offers from 65 applications. Our conversion rate of 45% (applications to offers) is the highest of any non-selective state education provider!

Destinations of BHASVIC A2 students who completed in 2015







ART – FINE ART: A LEVEL

MINIMUM ENTRY REQUIREMENTS

A level programme requirement with C in Art GCSE. A charge for materials applies to this course; bursaries and payment plans are available.

IS THIS COURSE RIGHT FOR ME

Are you ambitious, motivated and creative? This course is a practical making/creating course which uses a vast range of specialist materials and art techniques, it is 60% practical portfolio and 40% practical exam. Our Practical Portfolio component is supported by a 3000 word contextual/personal study essay and exam unit. The first year builds knowledge, understanding and skills through working on themes: the second year becomes more focused on you and the development of your personal ideas.

WHERE NEXT

We have a supportive and structured Visual Arts career progression program to help you with your next steps into Higher Education or Further Education courses. Students progress onto careers in the creative industries such as architecture, illustration, product design, web design, fashion design, photo journalism and commercial photography, film and animation.

WHAT WILL I STUDY

Our grade one outstanding course is broad and experimental in approach and includes drawing and painting, printmaking, mixed media and 3D work. We help you to develop a personal pathway with the skills and knowledge to produce creative individual and high quality artwork. We encourage you to be inventive, independent and involved.





BIOLOGY: A LEVEL

MINIMUM ENTRY REQUIREMENTS

A level programme requirement with C/4 in Maths GCSE, C/4 in English Language GCSE and 2 Bs in 2 Sciences at GCSE including Biology or Additional Science (not Applied Science).

WHAT WILL I STUDY

A full range of fascinating topics, from the details of cell structure to entire eco-systems. You will study animals, plants and micro-organisms; the workings of their cells, evolution and adaptations, and the application of bio-technology to benefit humans. You will discuss the challenges of maintaining bio-diversity and sustainable environmental management. Biology A level has a really good range of topics so that everyone will find areas that interest them! It is also very contextualised to relate it to how the world works around you. Students keep a lab book to evidence their skills.

IS THIS COURSE RIGHT FOR ME

You will enjoy this course if you: have a real enthusiasm for Biology and want to understand the complexity of living organisms and systems; want to understand how society makes decisions about biological issues; enjoy using your practical, mathematical and problem-solving skills and want to develop your skills further. Students will succeed most if they are self-motivated independent learners. Flipped learning is used for all topics, lessons are interactive and build upon independent study. Good with Chemistry, Maths, Psychology, Sport, Environmental Science.

WHERE NEXT

The range of courses and work opportunities involving Biology is vast and includes: Veterinary Science, Medicine, Dentistry, Physiotherapy, Sport Science, Psychology, Pharmacy, Bio-technology, Zoology, Marine Biology, Plant and Animal science, Cosmetics, Forestry, Agriculture, Environmental Science and many more. The scientific skills developed through Biology are widely valued and transferrable.





BUSINESS: A LEVEL

MINIMUM ENTRY REQUIREMENTS

A level programme requirement with C/4 in Maths GCSE and English Language GCSE.

WHAT WILL I STUDY

Business Studies allows you to develop a critical understanding of business by investigating and analysing real-life business successes and business failures. You can then use this invaluable knowledge to succeed in any career! Before and throughout this course students are encouraged to read up on businesses (brands, sports clubs, festivals, cars etc) that they are interested in. We'd also expect students to take an interest in current affairs so that they can begin to understand the causes and effects of consumer, business and Government behaviour. It includes elements of Marketing, Accountancy, Strategic Planning, managing employees and Economics. You will develop your skills of independence and Level 3 evaluative exam skills.

IS THIS COURSE RIGHT FOR ME

You need a genuine interest in businesses and the world outside of education. You need to be able to work individually or in groups to research into or discuss a particular business situation, questioning at every opportunity. Business A level is a course that requires students to learn theories, and identify and assess them in business case studies. There is therefore a substantial element of reading and writing. Analysing data and communicating using written, numerical, visual and verbal methods are all part of the course. Students are expected to study given basic business theory before every week so that we can use this self-taught knowledge to explore real business case studies and effectively answer exam questions. Business complements all courses because every student will be an employee at some point, whether as an engineer, a dancer etc, so will benefit from critiquing businesses.

WHERE NEXT

There are many routes of progression after A level Business. A wide variety of BHASVIC courses combine well with A level Business for entry to university. Some students choose employment and Business A level, understandably, approved by employers.





BUSINESS: BTEC LEVEL 3

MINIMUM ENTRY REQUIREMENTS

Vocational programme requirement with C/4 in Maths GCSE or English Language GCSE.

WHAT WILL I STUDY

This vocational course will allow you to study topics such as Business Development, Business Strategy, Financial Planning and Accounting, Marketing and Human Resource management. You will study real business successes and failures. Each topic will be studied by completing coursework investigating at least one actual business. You will develop your skills of independent learning, research, problem solving and organisation. Organisation is important so you can cope with the significant workload of completing weekly coursework activities. Analysing data and communicating using written, numerical, visual and verbal methods are all part of the course. Before and throughout the course students are encouraged to read up on businesses (brands, sports clubs, festivals, cars etc) that they are interested in. Students are also expected to take an interest in current business news so that they can begin to understand the causes and effects of consumer, business and government.

IS THIS COURSE RIGHT FOR ME

Business BTEC is ideal for students who are passionate about business and are either planning on starting up their own business or pursuing a career in business. It is a subject that requires students to learn theories, apply them to real businesses through their research, and assess their effectiveness. Business BTEC will suit you if you prefer coursework to exams and want a chance to combine college with a detailed investigation of individual businesses. You do need to be able to cope with constant and tight deadlines. There is a significant element of reading and writing because of the coursework, but also an expectation that students discuss and question at every opportunity. Students are expected to study given business theory before every week so that we can use this self-taught knowledge to explore real business case studies and effectively answer coursework activities. Students will need to manage multiple assignments so organisation is very important. There is one exam in the second year of the course.

WHERE NEXT

There are many routes of progression after this Level 3 BTEC Business course. A wide variety of BHASVIC courses combine well with Business BTEC for entry to university. Some students choose employment and the course is, understandably, approved by employers.





CHEMISTRY: A LEVEL

MINIMUM ENTRY REQUIREMENTS

A level programme requirement with C/4 in Maths GCSE and 2 Bs in 2 Sciences at GCSE including Chemistry or Additional Science (not Applied Science).

WHAT WILL I STUDY

You will learn about atoms, compounds, acid-base and redox reactions. You will learn why things happen and why they sometimes don't! We consider entropy and free energy, the transition elements and organic Chemistry in detail in the second year. Lessons contain practical work and problem solving. Practical work is an important aspect, and students generally do one a week (no separate coursework component); students keep a lab book to evidence their skills.

WHERE NEXT

Chemistry is essential for a large number of careers: Medicine, Veterinary Science and Dentistry. A large number of our students also move into Chemistry, Biochemistry, Environmental and Engineering careers or further study. It is useful for any science-based career.

IS THIS COURSE RIGHT FOR ME

Chemistry is right for you if you enjoy problem solving and like to know why things happen. Chemists are interested in applying their knowledge to practical situations. You should be able to work in groups and have the ability to focus independently. Students will succeed most if they are self-motivated independent learners. Flipped learning is used for all topics, lessons are interactive and build upon independent study. There are lots of opportunities to get help and support from the department. Good numeracy and literacy skills are essential. A small percentage of the assessment will be pure recall – instead students are required to apply their knowledge to novel situations and be able to interpret data and draw conclusions. Chemistry combines well with with Biology, Maths, Physics, Environmental Science.

STUDENT PROFILE

Maya Wall

PREVIOUS SCHOOL:

Brighton Hove High School.

STUDYING A LEVELS IN:

Maths, Further Maths, Physics and Chemistry.

I chose to study at BHASVIC because I loved the atmosphere of the college in particular the Maths department. Although homework when you first start was demanding, the way in which assignments are set help you to plan your time effectively.

In the future I plan to do a degree in Materials Science at Oxford university so attending BHASVIC's weekly specialist Oxbridge tutorials really helped with boosting confidence levels and the Oxbridge application process less intimidating.



CLASSICAL CIVILISATION: A LEVEL

MINIMUM ENTRY REQUIREMENTS

A level programme requirement with C/4 in English Language GCSE.

WHAT WILL I STUDY

Classical Civilisation is a fascinating course which fosters an understanding of ancient Greece and Rome. This allows for a greater understanding of our own culture and civilisation, which owes so much to Greece and Rome. Democracy, justice, empire and conflict are just some of the many concepts that will underpin your study. You will learn about some of the greatest figures in world history such as the heroic figures of Homer's epics: Odysseus, Achilles, Hector, Aeneas and Helen of Troy. You will also be introduced to some of the major political figures including Julius Caesar, Cicero, Pompey, Themistocles, Xerxes and Leonidas. Students will also learn about some of the great battles of the past such as Thermopylae, Salamis and Troy. The vibrant works of Homer, Cicero, Virgil and Herodotus are our starting point to investigate the beliefs, history, myth and society of antiquity. You will study ancient epic, history, drama and politics.

IS THIS COURSE RIGHT FOR ME

Do you love Ancient History? Do you enjoy ancient myths and legends? Do you spend a lot of your free time reading? Did you enjoy watching films set in the ancient world like 300, Pompeii, Rome or Clash of the Titans? All of these would be an advantage to students taking Classical Civilisation. Students will succeed best on this course if they are self-motivated and independent learners willing to share their ideas, and participate in discussions, debates and seminars. Students need to be able to structure well-balanced arguments in essay-style questions. It presupposes no knowledge of ancient languages and will appeal to anyone interested in the ancient past. Texts are studied in English translation and you are assessed entirely by examination. It combines especially well with all humanities, language and literature courses and is supported by study visits abroad.



WHERE NEXT

Classical Civilisation is a well-respected qualification. It will enable you to study a range of Classics, History and Literature courses at university including, of course, Classics, Classical Civilisation or Ancient History. It is also highly prized by employers, with students moving on to a range of careers in journalism, teaching, business and the heritage sector.





COMPUTER SCIENCE: A LEVEL

MINIMUM ENTRY REQUIREMENTS

A level programme requirement with B/6 in Maths GCSE. Ideally students will have studied Computer Science or IT at GCSE/Level 2 but this is not essential. They should have a keen interest in learning to program and should enjoy problem solving and logical thinking.

WHAT WILL I STUDY

You will spend two years becoming a strong programmer who is able to use a range of different languages and programming styles. Through this, you will learn how different algorithms are used to solve different types of problem. You will also cover a wide range of computing theory topics, learning more about how computer systems use logic, Boolean algebra, binary and hexadecimal number systems, how IDEs translate code and run it, different types of and uses for today's processors, how operating systems manage a computer, networks and how they direct traffic, web technologies and the databases behind them. As part of the course you will undertake a complex project worth 20% of your A level. The project allows you to pursue something of personal interest. Many students choose to develop a game or app for mobile platforms / PCs, a website with a back-end database, or use Raspberry Pi's for hardware related ideas e.g. remote-controlled home management systems.

IS THIS COURSE RIGHT FOR ME

If you enjoy problem solving and are good at Maths as well as taking a logical approach to tasks then this is the right course for you. The course will give you a great head start if you want to go on and study it at a higher level. Most students study Maths and Physics alongside, our new BTEC courses in either Computing or IT. Also other science courses would work well with this course. There are two exams at the end of the course worth 80% of your total marks. The course has a lot of mathematical content, from the decision-type maths area. If you choose not to study Maths A level it may make understanding some of the theoretical aspects very tough and limit your options for Higher Education.

WHERE NEXT

This course provides a strong core study of Computer Science to enable progression into Higher Education into a wide range of degree areas, although many of our students choose to study Computing, Engineering and Mathematics degrees. Equally, the course supports direct entry into a range of careers in the computing industry. A degree apprenticeship (where you earn a salary and have your university fees paid for) is another possible progression route from this course.





COMPUTING: BTEC LEVEL 3 (GAMES, APPS & ENCRYPTION)

MINIMUM ENTRY REQUIREMENTS

Vocational programme requirement with C/4 in English Language GCSE and C/4 in Maths GCSE.

WHAT WILL I STUDY

You will design and program games and mobile apps and interfaces, investigate security threats to data and plan and apply techniques to defend against security attacks on IT systems, explore how encryption protects data, learn more about how computer systems work, hardware and software, the way components of a system work together and how data in a system is used. You will be able to apply your computational thinking skills to help you analyse and break down problems and design and evaluate solutions and where relevant, you will work with or visit industry professionals to see some of this work in practice. All of our students take part in the national Bebras Computational Thinking Challenge, which BHASVIC has won for the past 4 years!

IS THIS COURSE RIGHT FOR ME

The nature of Computing and the thinking skills it develops means that it is typically chosen both by students with a wide range of interests and by those with a clear focus on this area. The latter often match this course with one or more from: Computer Science A level, IT BTEC, Maths A level, Physics A level or related courses in Science, Economics or Business. Although this course is assessed by mixture of examinations and coursework tasks, the emphasis on the latter suits students who enjoy getting their teeth into extended assignments which can be customised, allowing them to tailor tasks to their own interests.

WHERE NEXT

This course provides a strong core study of Computer Science to enable progression into Higher Education, with a focus on areas such as software engineering, game development, app design and programming. It is also a good foundation for degrees where computing-related skills and knowledge may be advantageous, such as Business Studies, Sciences and Engineering. Equally, the course supports direct entry into a range of careers in the computing industry. A degree apprenticeship (where you earn a salary and have your university fees paid for) is another possible progression route from this course.





CREATIVE DIGITAL MEDIA PRODUCTION: BTEC LEVEL 3 DIPLOMA (FILM AND TELEVISION PRODUCTION)

MINIMUM ENTRY REQUIREMENTS

There is no requirement to have a C/4 in GCSE English for this course. However, students are required to have a level of camera and editing experience that will be assessed at interview, by submitting a portfolio of two artefacts (either web address for online artefacts, DVD, or memory stick).

WHAT WILL I STUDY

This largely practical course focuses on developing the technical skills required for working in film and television production. The units covered allow you to develop a professional understanding of the industry and the skills required to work within it. You will work in partnership with real media companies, pitching and producing work that responds to real briefs. You will work in production crews to script, storyboard, produce (both using single camera and multi camera shoots), edit and present documentary, film and television products. There is no external examination on this course. However, you will be required to create a product that responds to a brief, set by the examination board. This is externally assessed.

IS THIS COURSE RIGHT FOR ME

If you currently enjoy making your own media and film products, and are keen to develop industry-standard technical skills, this is the right course for you. This course is ideal for you if you already showcase your work on a website or YouTube channel, or if you'd like to do so in the future. Throughout the course, you'll be able to create a portfolio of work that you can show to future employers and universities. This course requires a real time commitment from students. You will produce at least four practical pieces, which require group work outside of lessons, as you will be storyboarding, shooting and editing footage. This largely takes place at weekends, so students need to be really committed to pursuing a media career. It goes well with Media Studies, Film Studies, Graphic Design; IT or Computer Science would be beneficial.



WHERE NEXT

This qualification is the equivalent of two A levels and carries UCAS points. This course will prepare you for working in the creative industries, or for entry onto a practical course at university. At the end of the course, you will have a portfolio of work to take to university or job interviews.





CREATIVE DIGITAL MEDIA PRODUCTION: BTEC LEVEL 3 EXTENDED CERTIFICATE

MINIMUM ENTRY REQUIREMENTS

Vocational programme requirement with C/4 in English Language GCSE.

WHAT WILL I STUDY

This practical course focuses on developing student's communication, pre-production, production and post-production skills that are required for working in the film and television industry. Each year, students are given the opportunity to explore two practical productions: music video and factual television production (year 1) and advertising and a final major production in editing techniques (year 2). You will work in production crews to set internal assignment briefs and develop a production from its initial treatment and pitch to its final individual export. There is no external examination on this course.

IS THIS COURSE RIGHT FOR ME

To do this course you should have a strong interest in developing your own media products and in learning research and communication skills. You do not need to have any prior camera or editing knowledge for this course, but should have a willingness to learn, be self-motivated and well organised to meet deadlines throughout the year. You will also undertake two external briefs, one of which is an exam. This course requires a real time commitment from students. You will produce two practical pieces, which require group work outside of lessons, as you will be storyboarding, shooting and editing footage. This largely takes place at weekends, so students need to be committed to this. There is an external exam for this Certificate so students looking for an entirely practical option should opt for the Diploma. The course goes well with: Media Studies, Film Studies, Graphic Design, IT, Business Studies or Computer Science.

WHERE NEXT

This BTEC is equivalent to one A level and carries UCAS points. BTEC Creative Digital Media is designed for post-16 learners who aim to progress to Higher Education and ultimately to employment, possibly in the media industries, as part of a programme of study alongside other BTEC Nationals or A levels. This course provides excellent practical training for entry into the creative media industries, and you will have a portfolio of work to take to interviews by the end of two years.





DANCE: A LEVEL

MINIMUM ENTRY REQUIREMENTS

A level programme requirement with C in Dance GCSE if taken or Grade 5 ballet: an audition at enrolment time is required if neither is held.

WHAT WILL I STUDY

The dancer as a performer, the process and craft of choreography and the analysis of dance works. You will perform in a solo and a quartet and create a group piece of choreography. You also have a written exam focusing on the set works you have studied. In addition to your core hours you will receive weekly dance technique classes. Enjoyment of practical sessions is essential along with an interest in learning about dance history and other choreographers' works. The essay component requires skills of written analysis. Professional dance companies will deliver workshops where you will learn repertoire for your quartet and solo. There will be theatre visits and performance opportunities.

IS THIS COURSE RIGHT FOR ME

If you enjoy watching dance, are happy to perform and are willing to try out new ideas then you will enjoy the course. Please note that you need to be prepared to work outside of class time to rehearse pieces. Assessment is 50% practical and 50% written.

WHERE NEXT

This course provides a suitable foundation for study in Higher Education and for employment. Students have gone on to further their studies of dance at Rambert, London Contemporary Dance School, Trinity Laban, Northern School of Contemporary Dance and London Studio Centre, Bird, Laines and Urdang.





DRAMA AND THEATRE STUDIES: A LEVEL

MINIMUM ENTRY REQUIREMENTS

A level programme requirement with B/6 in English Literature GCSE.

WHAT WILL I STUDY

You will study and stage a range of different texts and apply your own ideas to them. You will learn about different practitioners who have influenced theatre and gain a historical understanding of how modern theatre has arisen. Within the practical components of the course you will perform monologues and duologues and also work in groups, both devising and staging plays. There is portfolio coursework detailing your rehearsal processes and also a written exam which includes evaluation of the theatre you have seen on the course. Be prepared to go and see productions locally and in London.

IS THIS COURSE RIGHT FOR ME

If you enjoy watching theatre, are happy to perform and are willing to try out ideas in a workshop environment then you will enjoy the course. The ability to work as part of a team is essential. There are many opportunities to practically apply your skills as a performer. More challenging areas would include essay writing and the application of theory to practice. Assessment is 40% practical and 60% written. This course would suit students who are interested in studying any humanities subjects such as English Literature and Language as well as History and Classics. Additionally it sits well alongside social sciences such as Psychology and Sociology.



WHERE NEXT

Drama and Theatre Studies focuses on communication and visual / verbal analysis. Students have gone on to study Drama, Theatre Studies, English, Classics, History, Law, Philosophy or Psychology. Others have gone on to study a performance related qualification at Drama Schools. Many have pursued careers in the police force, social work, teaching and the advertising industry.





ECONOMICS: A LEVEL

MINIMUM ENTRY REQUIREMENTS

A level programme requirement with C/4 in Maths GCSE and C/4 in English Language GCSE.

WHAT WILL I STUDY

Macro-Economics investigates the working of the whole economy; analysing possible causes of inflation, unemployment, and the effects of government intervention. You will also examine the complex interdependence between economies. Micro-Economics examines the way in which the price system of free enterprise economies allocates scarce resources. The new syllabus also includes concepts such as behavioural economics, which considers how consumers make decisions based on emotions rather than rationality, and the analysis of financial markets.

IS THIS COURSE RIGHT FOR ME

Do you want to know why our government makes certain decisions? Do you enjoy the challenge of debating both sides of an argument? Economics helps to explain a wide variety of real-world phenomena such as economic growth and commodity prices and is a highly valued and respected A level. You should have an enquiring mind, for example, be interested in the effect of a falling value of the pound and how decisions taken by government affect choices which consumers make - taxing sugary drinks for example. There are a lot of new terms and theory. Students should be prepared to learn what can appear theoretical. Economics is a method or tool for analysing decisions. You should be prepared to study independently, there is much to cover so you have to read and learn between lessons. Showing genuine evaluation requires deep understanding. Students who enjoy and understand the logic of Maths will find a parallel in Economics and Maths is a prerequisite for many Economics degrees. Due to its breadth of relevance Economics complements any course.



WHERE NEXT

Economics students in the past have gone straight into jobs in the banking and finance sector, but the majority go on to university, many to study Economics. We regularly get students into Oxford and Cambridge, and the London School of Economics.





ENGLISH LANGUAGE: A LEVEL

MINIMUM ENTRY REQUIREMENTS

A level programme requirement with C/4 in English Language GCSE.

WHAT WILL I STUDY

A wide range of everyday spoken and written texts along with the linguistic and grammatical concepts we need to analyse and explore how people are using their language to present their thoughts, feelings, values and identities in any situation.

IS THIS COURSE RIGHT FOR ME

If you find yourself listening in to conversations on the bus, analysing the headings to advertising posters or wondering at the words used in social media exchanges, you are a budding English Language expert and should do this course.

WHERE NEXT

A degree in English Language and Linguistics can lead to careers in many different areas, from speech therapy and teaching (including TEFL teaching), to journalism and forensic linguistics. The knowledge, understanding and confidence with the language that this course brings means that it provides excellent grounding for a wide range of careers including law, media, marketing and advertising, indeed any career where skill with language is key.



ENGLISH LITERATURE: A LEVEL

MINIMUM ENTRY REQUIREMENTS

A level programme requirement with C/4 in English Language GCSE.

WHAT WILL I STUDY

You will explore a range of exciting and challenging literary texts, including novels, poetry and plays from across the last 500 years as well as 21st century texts, all of which have stood the test of time and proved themselves to be great writing. You'll be encouraged to read widely, independently and in-depth.

IS THIS COURSE RIGHT FOR ME

Those who love reading literary texts, thinking about how they are written, who wrote them and what other readers think about them and discussing and writing about what they might mean should take this course.

WHERE NEXT

A degree in this highly-regarded course makes you a sophisticated reader and writer with analytical skills which are sought after across a range of careers including jobs in the media such as journalism, but also careers such as publishing, marketing, advertising, law and teaching and academic careers.



ENGLISH LANGUAGE & LITERATURE: A LEVEL

MINIMUM ENTRY REQUIREMENTS

A level programme requirement with C/4 in English Language GCSE.

WHAT WILL I STUDY

You will explore a wide range of texts including novels, stories and plays, as well as non-literary writing like magazine articles, webpages, autobiography, memoirs and personal writing such as letters, diaries, emails and texts or transcripts of conversations. Studying these texts will help you to think about how people use language to present their ideas and identities. You will be required to submit a piece of fictional creative writing and a piece of journalism for coursework.

IS THIS COURSE RIGHT FOR ME

If you have enjoyed both your English GCSEs and particularly the creative elements of your English work; if you write your own stories, poems, articles, reviews in your own time; if you fancy yourself as a writer in the future and enjoy studying how other writers use language, you should do this course.

WHERE NEXT

There are now degrees in English and Creative/Journalistic Writing that enable students to study English in a more vocational fashion, leading on to work as a writer in some specific context: newspaper/magazine journalists, website writers, creative copywriters, publishing sub-editors and so on.





ENGLISH: GCSE

MINIMUM ENTRY REQUIREMENTS

Grade D/3 or below in English GCSE.

WHAT WILL I STUDY

A range of fiction and non-fiction texts that require well written analytical responses to show a confident technical understanding of how writers use words and sentences to create their meanings. Students will also develop their own skills and ideas in writing and speaking.

IS THIS COURSE RIGHT FOR ME

This is explicitly for students who didn't get the grade they wanted at GCSE and need to retake to get a C or above.

WHERE NEXT

This enables students to take or complete a range of Level 3 courses that require grade C English GCSE.





ENVIRONMENTAL SCIENCE: A LEVEL

MINIMUM ENTRY REQUIREMENTS

A level programme requirement with C in 2 Sciences at GCSE and C/4 in English Language GCSE.

WHAT WILL I STUDY

You will explore the key challenges facing our planet and how the environment supports us, how we threaten these support systems and strategies for a more sustainable lifestyle. Studying wildlife conservation, resource management, energy use, pollution and food production you will develop an in-depth understanding of the problems... and the solutions. The new specification covers many aspects of the world around us, including conservation methods, land use conflict, global climate change, pollution, energy resources, sustainable biological resources, evolution, biotechnology and ecosystems and population dynamics – it's a really good range of topics so that everyone will find areas that interest them! It is also very contextualised to relate it to how the world works around you.

IS THIS COURSE RIGHT FOR ME

This course is for you if you: have a real interest in the environment and its sustainable management; enjoy science and want to apply your understanding in real-world contexts; want to develop your skills in researching and evaluating information and analysing data; like debate and problem solving. You are most likely to succeed if you are a self-motivated independent learner. Lessons are interactive and build upon independent study. You should be willing to participate in topical discussions and debates, be able to structure well-balanced arguments in essay-style questions and use data from different sources to analyse results. This course combines well with Biology, Chemistry, English, Geography, Maths, Psychology, Politics.

WHERE NEXT

Your interest in the environment and ethical issues could lead you into a diverse world of career paths including ecology and wildlife conservation, environmental science, agriculture, geography, geology or climatology. Further study options include: Zoology, Marine Biology, Biotechnology, Conservation, Animal Science, Sustainable Civil Engineering, Journalism, Urban Landscape Design etc. Environmental experts are needed in business, industry and government as well as estate management, land reclamation, countryside management and conservation.





FILM STUDIES: A LEVEL

MINIMUM ENTRY REQUIREMENTS

A level programme requirement with C in 2 Sciences at GCSE and C/4 in English Language GCSE.

WHAT WILL I STUDY

Film Studies is designed to explore and creatively engage with all aspects of filmmaking. It involves analysis of a wide range of texts, including British, American and European cinema, silent film, documentary and experimental film. You will analyse both the technical and creative choices made by film makers to produce meaning, as well as develop an understanding of how a film's production context affects the meanings it generates. Individually, you will also create a short film or a screen play (20% of the final grade). You will study twelve films and write analytical essays on them, focussing on spectatorship, aesthetics and film theory. You will be assessed on these in two written examinations.

IS THIS COURSE RIGHT FOR ME

The course contains a mixture of written analysis and practical work. The main focus is on critical analysis of film texts. You will develop an understanding of how the technical and creative aspects of film-making create meaning for audiences. You should enjoy watching a wide range of films, like sharing opinions on these with others and be able to write critically about films. Best suited to people who are strong writers, who enjoy watching and analysing a range of films (including World Cinema). Film Studies goes well with any theory-based, essay based course such as Media Studies, English Literature, History, Classics, Politics, Sociology etc. as well as Digital Creative Media, IT or Computer Science if you enjoy practical work.

WHERE NEXT

Film Studies is a well-established A level and fully recognised by all universities. It provides an excellent progression for those who want to continue studying film or other courses requiring critical and analytical skills at university. There is a practical element to the course, which makes it suitable for those who want to work in the film industry.





FRENCH: A LEVEL

MINIMUM ENTRY REQUIREMENTS

A level programme requirement with B/6 in French GCSE and C/4 in English Language GCSE.

WHAT WILL I STUDY

You will learn to communicate fluently in the language both orally and in writing. You will read and listen to authentic material in order to develop your comprehension skills and your knowledge of the culture. You will study topics, literary texts and films relevant to the country/countries where the language is spoken.

IS THIS COURSE RIGHT FOR ME

Did you enjoy the language at GCSE? Do you want to become fluent and develop your linguistic and cultural knowledge? Good linguists are risk takers and naturally inquisitive. At this level you need to be rigorous in your learning and very accurate in your application of knowledge.

WHERE NEXT

Linguists are increasingly in demand in the world of work. You may consider a degree purely in Languages / Linguistics / European Studies, leading to a wide variety of careers including, but not limited to, translation, interpreting, teaching, publishing, journalism and marketing. A language can also be combined with most subjects at Higher Education level, for example Law, International Relations, Politics, Media, Business or Sciences.





GEOGRAPHY: A LEVEL

MINIMUM ENTRY REQUIREMENTS

A level programme requirement with C/4 in English GCSE and a Science GCSE. C in Geography GCSE, if taken.

WHAT WILL I STUDY

“Geography is the study of Earth’s landscapes, peoples, places and environments. It is, quite simply, about the world in which we live. Geography is unique in bridging the social sciences (human geography) with the natural sciences (physical geography)” [Royal Geographical Society]. Geography investigates current issues through the study of natural and human environments from a local to global scale. Topics covered in the first year include Coastal Landscapes, Globalisation, Tectonic Processes and hazards, Diverse places and the Water cycle and Water insecurity. In the second year we will study Superpowers, Climate Change, The Carbon Cycle, Identity and sovereignty and Migration. Students also complete an independent piece of coursework in the second year. You will also be expected to learn and use case studies. These are in-depth examples that focus on a located and defined area or event. They should be used to supply the evidence necessary for essays and other long answers on a topic. While you will be provided with a selection of case studies, you will also be encouraged to develop your own.

WHERE NEXT

Geography is studied at degree level as a science, a humanity, or a combination of both. The wide range of skills developed by studying the subject means Geographers are highly valued by employers, and Geographers frequently top graduate employment tables. Geography is consistently in the top three subjects at university with the highest employment rates for graduates. Geography degrees can usually lead to a BSc or a BA degree depending on the balance of physical or human Geography involved (BA is normally more human Geography). There are many other degrees in subjects which are very closely related to Geography such as Anthropology, International Development, International Relations and Earth Sciences.

IS THIS COURSE RIGHT FOR ME

Geography suits a wide range of students. It develops skills such as extended writing, numerical and data analysis, IT research, mapping, fieldwork and coursework skills. It combines well with other courses from the arts or sciences. You will be offered opportunities to visit a variety of sites and locations, some of which are compulsory and others which are recommended but optional. This will include fieldwork in the local area, and opportunities to visit other significant local sites, as well as the option of a foreign trip (Croatia and France have been previous destinations). We organise lectures by university academics and

professionals. A successful Geography student would: take an interest in the world around you, do extra “reading around the courses” not just doing work which you have been set, arrive fully prepared for lessons, learn and use appropriate terminology, be prepared to have a go at more advanced activities and both ask and answer questions in class. The course is 20% coursework, and 80% external exam. This course goes well with History, Classical Civilisation and English Literature or Language. Additionally it complements science like Biology or Environmental Science, and social sciences such as Psychology and Sociology.





GERMAN: A LEVEL

MINIMUM ENTRY REQUIREMENTS

A level programme requirement with B/6 in German GCSE and C/4 in English Language GCSE.

WHAT WILL I STUDY

You will learn to communicate fluently in the language both orally and in writing. You will read and listen to authentic material in order to develop your comprehension skills and your knowledge of the culture. You will study topics, literary texts and films relevant to the country/countries where the language is spoken.

IS THIS COURSE RIGHT FOR ME

Did you enjoy the language at GCSE? Do you want to become fluent and develop your linguistic and cultural knowledge? Good linguists are risk takers and naturally inquisitive. At this level you need to be rigorous in your learning and very accurate in your application of knowledge.

WHERE NEXT

Linguists are increasingly in demand in the world of work. You may consider a degree purely in Languages / Linguistics / European Studies, leading to a wide variety of careers including, but not limited to, translation, interpreting, teaching, publishing, journalism and marketing. A language can also be combined with most subjects at Higher Education level, for example Law, International Relations, Politics, Media, Business or Sciences.





GRAPHIC DESIGN AND COMMUNICATION: A LEVEL

MINIMUM ENTRY REQUIREMENTS

A level programme requirement. A charge for materials applies to this course; bursaries and payment plans are available.

WHAT WILL I STUDY

Our grade one outstanding course is broad and experimental in approach and includes one or more areas of graphic communication with the possibility of exploring a combination: illustration, advertising, packaging design, design for print, communication and computer graphics, multimedia, animation, web design, film, television and/or video. You will create design work to solve graphical problems and address commercial briefs.

IS THIS COURSE RIGHT FOR ME

This course is a practical making/creating course which uses a vast range of specialist materials and art techniques, it is 60% practical portfolio and 40% practical exam. The first year of our Practical Portfolio component builds knowledge, understanding/skills through working on themes; the second year becomes more focused on you and the development of your personal ideas and professional practice.

WHERE NEXT

We have a supportive and structured Visual Arts career progression programme to help you with your next steps into Higher or Further Education courses. Students progress on to careers in the creative industries such as graphic designer, illustrator, web design, commercial print, television, media and advertising.





HEALTH AND SOCIAL CARE: BTEC LEVEL 3

MINIMUM ENTRY REQUIREMENTS

Vocational programme requirement with C/4 in English Language or English Literature GCSE.

WHAT WILL I STUDY

You will study human lifespan development and meeting individual needs and support needs; also physiological disorders and their care. You will learn the theoretical basis for providing good quality care, examining how practitioners use legislation, policies, and communication to implement professional practice. Coursework is based around applying knowledge learnt to a Health and Social Care setting so is very vocational. The college can help to place students in work experience placements. Some second year students may have the option of a hospital placement at Brighton and Sussex University Hospital.

WHERE NEXT

This course is ideal for progression onto vocational degrees or apprenticeships such as nursing, midwifery, teaching, social work, mental health and counselling. It also provides an excellent foundation for anyone going directly into a health or social care related career.

IS THIS COURSE RIGHT FOR ME

This course is ideal for students planning on a career within health and social care. The BTEC Extended Certificate is equivalent to one A level (2 years) and students must have a commitment to continued assessment via course work. Work experience will be required of all students regardless of level of study. The elements that usually supply the greatest areas of challenge are the unit on Anatomy and Physiology and the sheer amount of coursework. You must be very organised. Students will need to manage multiple assignments for possibly 1-3 teachers at the same time so being organised is very important. There will be at least 2 exams plus coursework. Complementary subjects are Medical Science, Psychology, Sociology, Biology.

BHASVIC

I went to BHASVIC and now I push scientific boundaries and work on projects ranging from rocket thrusters to solar power technologies.”

Hollie, Research Engineer & Doctoral Student



HISTORY: A LEVEL

MINIMUM ENTRY REQUIREMENTS

A level programme requirement with C/4 in English Language GCSE.

WHAT WILL I STUDY

Common to each of our History courses are narratives that are full of intrigue, heroism, conflict and struggle. You will investigate some of the greatest personalities and events of the past: William the Conqueror, Lenin, Mao, the Crusades, the struggle for democracy and equality in Britain, the Cold War. Each of these topics illuminates the present whilst being fascinating in their own right.

WHEN APPLYING PLEASE DECIDE BETWEEN ONE OF THE TWO OPTIONS BELOW TO STUDY.

HISTORY A LEVEL (MIEVEAL AND EARLY MODERN)

Paper 1: The Crusades c.1095-1204
Paper 2: Anglo-Saxon England and the Anglo-Norman Kingdom c.1053-1106
Paper 3: The witch craze in Britain, Europe and North America, c 1580-1750
Paper 4: Coursework: The Origin of the English Civil War. The course is 20% coursework, and 80% external exam.

HISTORY A LEVEL (MODERN)

You will study "Democracy Dictatorship and Social Change in the Modern World".
Paper 1: Russia from Lenin to Yeltsin 1917-91
Paper 2: Mao's China 1949 - 76
Paper 3: Either Protest, Agitation and Parliamentary Reform in Britain c.1780-1928
Paper 4: Coursework: The Origin of the Cold War. The course is 20% coursework, and 80% external exam.



IS THIS COURSE RIGHT FOR ME

Do you want to discover more about the most significant events and people in history? Are you fascinated about what we may be able to learn from the past? Do you enjoy discussion, debate, reading and research? History encourages independent thinking and really suits students who enjoy reading, questioning and debate. Lessons will mainly be seminar style and your learning is supported by foreign and local trips, university study days and student conferences. History is even more engaging when it is seen in action. We invite visiting academics, take trips to local historical sites such as Battle, Pevensey and the Banqueting House; arrange study and lecture conferences; visit universities and their archives and other major museums such as the National Portrait Gallery, British Army Museum and Mary Rose. We also have a fantastic history of foreign travel, including recent trips to China, Russia, Germany, Italy, and Sicily.

WHERE NEXT

History is a highly esteemed qualification as it develops rigorous analytical, evaluative and communication skills. History students are prized for their ability to gather and analyse information, express themselves clearly and for their independence of mind. A large percentage of BHASVIC Historians have gone on to top universities and then taken prestigious posts in academia, the media, business, and the legal professions. History is very highly regarded by universities and employers for its rigour and degree of challenge. Whether you study History primarily for pleasure or for the highly respected qualification to which it leads, we can promise you a stimulating, supportive and enjoyable experience.



IT (DIGITAL MARKETING & WEB DESIGN) BTEC LEVEL 3

MINIMUM ENTRY REQUIREMENTS

Vocational programme requirement with C/4 in English Language GCSE. Ideally will have studied some form of IT/ Digital Media course at school at GCSE/Level 2.

WHAT WILL I STUDY

You will spend two years becoming a strong programmer who is able to use a range of different languages and programming styles. Through this, you will learn how different algorithms are used to solve different types of problem.

You will also cover a wide range of computing theory topics, learning more about how computer systems use logic, Boolean algebra, binary and hexadecimal number systems, how IDEs translate code and run it, different types of and uses for today's processors, how operating systems manage a computer, networks and how they direct traffic, web technologies and the databases behind them.

As part of the course you will undertake a complex project worth 20% of your A level. The project allows you to pursue something of personal interest. Many students choose to develop a game or app for mobile platforms / PCs, a website with a back-end database, or use Raspberry Pi's for hardware related ideas e.g. remote-controlled home management systems.

IS THIS COURSE RIGHT FOR ME

If you enjoy problem solving and are good at Maths as well as taking a logical approach to tasks then this is the right course for you. The course will give you a great head start if you want to go on and study it at a higher level.

Most students study Maths and Physics alongside, our new BTEC courses in either Computing or IT would work well with this course, and also other science A levels.

There are two exams at the end of the course worth 80% of your total marks.

The course has a lot of mathematical content, from the decision-type maths area. If you choose not to study Maths A level it may make understanding some of the theoretical aspects very tough and limit your options for Higher Education.

WHERE NEXT

This course provides a strong core study of Computer Science to enable progression into Higher Education into a wide range of degree areas, although many of our students choose to study Computing, Engineering and Mathematics degrees. Equally, the course supports direct entry into a range of careers in the computing industry. A degree apprenticeship (where you earn a salary and have your university fees paid for) is another possible progression route from this course.





LAW: A LEVEL

MINIMUM ENTRY REQUIREMENTS

A level programme requirement with B/6 in English Language or Literature GCSE.

IS THIS COURSE RIGHT FOR ME

The Law A level course will enable students to develop a solid foundation in the principles of the English Legal system (e.g. the court system, legal personnel, sources of law), the nature of Law (e.g. themes of morality, justice and the role law plays in society) as well as two substantive areas of Law – Crime and Tort. Criminal Law covers murder, manslaughter, non-fatal offences such as GBH as well as defences available such as intoxication, self-defence and insanity. The study of Tort will involve students learning about negligence, nuisance, occupiers' liability as well as defences and remedies. The course will be brought to life through discussions of important legal issues, presentations, evaluation of key cases, visiting speakers as well as trips to the local courts (Magistrates and Crown) plus a visit to the Royal Courts of Justice and a tour of the Supreme Court.

WHAT WILL I STUDY

Do you enjoy debating, expressing your opinions and justifying them based on evidence? Do you enjoy reading and expressing yourself in writing? Thinking of a career in Law, or intending to study Law at university? Do you know your rights and responsibilities? Do you want to study a 'new' course?

WHERE NEXT

Due to the problem solving skills that are developed Law is highly regarded. Many of our students progress to university for Law, Law related courses such as Criminology or a degree in any other course.



LAW (APPLIED) BTEC: LEVEL 3

MINIMUM ENTRY REQUIREMENTS

Vocational programme requirement with C/4 in English Language or Literature GCSE.

IS THIS COURSE RIGHT FOR ME

The BTEC Applied Law course is an enjoyable but challenging way of learning about our English Legal System. There are three units in the first year leading to the Certificate: Dispute Solving and the courts; how laws are made and used; Civil Liability and Criminal Offences. There are three units in the second year leading to the Diploma; Homicide and police powers; Property Offences; and Tort Law. You will be writing essays and problem questions to prepare for university. You will also be completing claim forms and letters, and developing your work based skills.

WHAT WILL I STUDY

Do you know your rights? You should consider this course if you are interested in a career in Law, or studying Law or a Law-related course at university. You may also be interested in this course if you want to study something new which is wholly coursework based.

WHERE NEXT

Many of our students have gone to university to study Law or Law-related courses such as Criminology. Others have used their work based skills to seek employment in the legal or business world or as apprentices.



MATHS: A LEVEL (Double)

MINIMUM ENTRY REQUIREMENTS

A level programme requirement with A/7 in Maths GCSE and C/4 in English Language or Literature. A love of Maths; students will need to have strong GCSE Algebra when they arrive here, as the jump from GCSE to A level can feel quite vast at first.

IS THIS COURSE RIGHT FOR ME

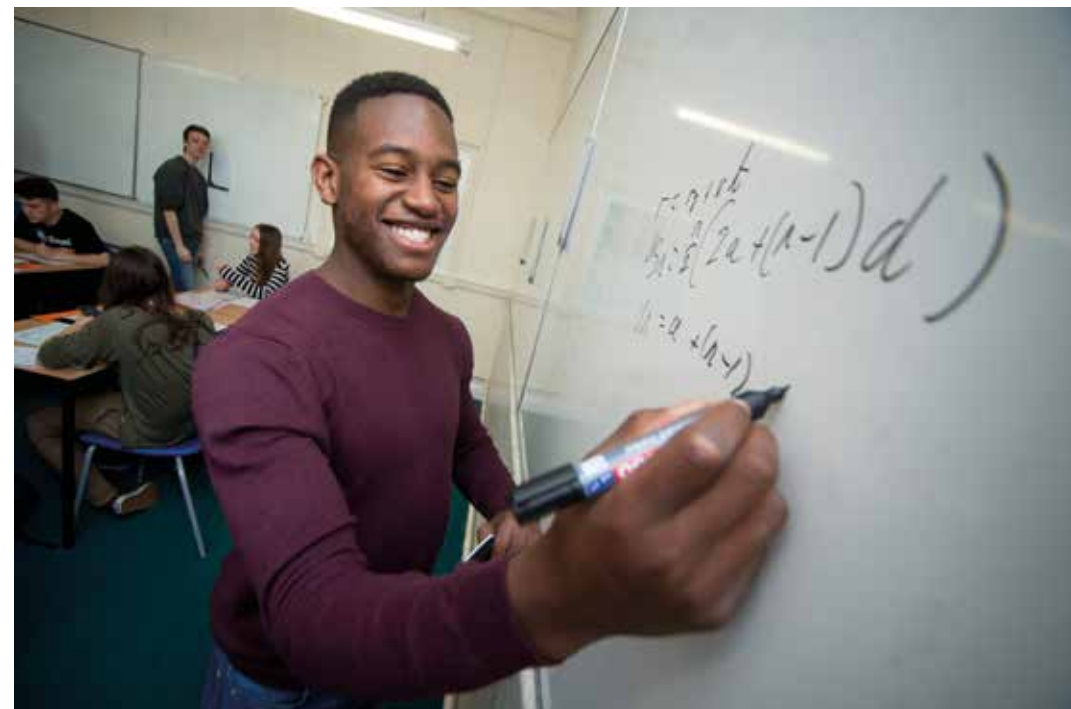
In the first year you will complete and sit your regular Maths A level, whilst studying Further Pure 1 alongside it. Here you will see be exposed to new areas of Maths such as Complex Numbers, Matrices, and Simple Loci Problems. In your second year, you will complete your Further Maths A level, comprised of FP1, FP2, FP3, and either FP4, Further Stats, or Further Mechanics. Your choice of fourth module will depend on what you wish to study at university. You will need to be resilient, and enjoy getting stuck and overcoming problems. Many classes make their own Facebook group so they can post problems to each other and help each other along. There are Teacher-led Subject Extensions daily, Drop ins with the Doubles (A2 students help all who appear), a vast array of teacher websites and video networks covering all content for support.

WHAT WILL I STUDY

This is a course for students who love Maths and want to dedicate a great deal of their time at BHASVIC to Maths classes. Students will spend at least 9 hours per week on independent study, culminating in the submission of an assignment each week. Students sit a 1.5 hour tracking test every half term, completing their A level Maths exams in their first year, and their A level Further Maths exams in their second year. Do not enter this course lightly, as it is very intense, especially at the beginning where students are not used to such a fast pace and such a high workload outside of class. All students find this course challenging at some point, but the difference between a successful and an unsuccessful student is how they respond to that challenge. That said, if you love Maths, this course will transform you completely by the end of the two years into a very competent mathematician.

WHERE NEXT

Two high grades in Maths and Further Maths A level will be excellent preparation to study Maths (or a Maths related subject) at any university. If you want to apply for the top universities in Physics, Maths, Engineering, then Double Maths is essential. STEP and STRETCH classes are also available to help you prepare for top university entry exams if needed.





MATHS: A LEVEL (Single)

MINIMUM ENTRY REQUIREMENTS

A level programme requirement with B/6 in Maths GCSE and C/4 in English Language or Literature GCSE. Students will need to have strong GCSE Algebra when they arrive here, as the jump from GCSE to A level can feel quite vast at first.

IS THIS COURSE RIGHT FOR ME

This is a two year course, and all assessment is via three 2 hour exam papers taken at the end of the two years – P1, P2, and the Applied paper, which is 50% statistics, 50% mechanics. Having the drive to access our support on offer is essential; class or course Facebook groups, lunch time Teacher Subject Extensions daily, drop ins with the Doubles students. There is also a vast array of teacher websites and video networks covering all content. Students will need to be resilient, and enjoy getting stuck and overcoming problems.

WHERE NEXT

Many students continue with their Maths studies after leaving BHASVIC. University departments in the following subjects prefer students to have A level Maths if possible: Physics, Psychology, Economics, Computing, and Business Studies.

WHAT WILL I STUDY

This course is demanding, and will feel like a big step up from GCSE at first. But if you enjoy working hard, and enjoy tackling a difficult problem, then this is the course for you. BHASVIC Maths will stretch and challenge all of its learners, and provides plenty of support along the way. Students will spend at least 4.5 hours per week on independent study, culminating in the submission of an assignment each week. Students sit a 1.5 hour tracking test every half term, with a progression exam at the end of their first year. This is a demanding course that students find difficult at first, but with hard work they persevere and by Christmas they have developed a workload routine and find the course highly rewarding. All students find this course challenging at some point, but the difference between a successful and unsuccessful student is how they respond to that challenge.



MATHS: GCSE

MINIMUM ENTRY REQUIREMENTS

A Grade D/3 or below in Maths GCSE.

IS THIS COURSE RIGHT FOR ME

This course will be an opportunity to re-take your GCSE Maths if you didn't get a grade 4 first time. At BHASVIC we have an excellent track record working with students to achieve this important qualification. We offer a fresh start, in a new, more mature environment than school, where we will support you in getting to where you need to be. The course will teach everything at Foundation level where the maximum grade achievable is a grade 5.

WHERE NEXT

A grade 4 in Maths is a minimum requirement for most jobs and Higher Education courses.

WHAT WILL I STUDY

Though all students who don't have a grade 4 at Maths GCSE are required to take this course, you will have the full support of the BHASVIC Maths department behind you. Lessons will be engaging, and will focus on getting you to where you need to be to succeed. You may even decide that you want to aim higher and strive for a grade 5 (or higher!), in which case we will be with you every step of the way.



MEDIA STUDIES: A LEVEL

MINIMUM ENTRY REQUIREMENTS

A level programme requirement with C/4 in English Language
GCSE C in Media Studies GCSE, if taken.

IS THIS COURSE RIGHT FOR ME

The course is a combination of theory, research and practical application, needing good written and communication skills. At A level you will undertake critical analysis of a range of different media forms including television, advertising, print media and online media; applying a variety of theoretical approaches, along with an understanding of media language investigating how texts position audiences to respond in particular ways. Additionally you will carry out an individual practical production, for example a music video. Heavily weighted in terms of theory and analysis. Practical work is worth 30% of the final grade; two written examinations.

WHERE NEXT

Many Media students apply for further study in related disciplines at university, with a number then progressing to working in the media industries. Media apprenticeships are also very popular with some students. Critical thinking, along with analytical and practical skills, is highly regarded and beneficial in many different professional and Higher Education contexts.

WHAT WILL I STUDY

You will develop excellent critical thinking skills and a detailed understanding of how the media works; focusing on media language, representation, audience and industry. The course is best suited to students with ability to think critically, work independently and enjoy written analysis of media texts. You need to be a creative individual with a strong work ethic. If you are curious about the world around you and keen to become part of the organisations which shape our views of the world, then this is right for you. Goes with any theory-based, essay subject such as Film Studies, English, Digital Creative Media, IT, Computer Science etc.

STUDENT PROFILE

Thomas Sayers



PREVIOUS SCHOOL:

Chailey School.

STUDYING A LEVELS IN:

Communication and Culture and German plus BTEC in Creative Media Production.

I chose to come to BHASVIC because I loved the attitude of BHASVIC staff and students. My highlights were being an active member of BHASVIC's Student Union, and attending the BHASVICTORS Media and Performing Arts award

ceremony, as part of the Creative Arts Festival. I am going on to study Media and Communication at Birmingham City University in September with an end goal of a career in either Marketing or Events Management.



MUSIC: A LEVEL

MINIMUM ENTRY REQUIREMENTS

A level programme requirement with B/6 in Music GCSE if taken or Grade 5 instrument and C/4 in English Language GCSE.

IS THIS COURSE RIGHT FOR ME

The course suits people who are strong performers, who enjoy composing and deepening their appreciation and knowledge of the development of Western Classical musical language since 1600. Studying A level Music gives you the power to engage with and appreciate music more deeply. It also gives you the opportunity to perform and compose in whichever style you wish to and it enhances your versatility, creative ability and communication skills.

WHAT WILL I STUDY

You will develop your solo and ensemble performance skills and learn to compose for different combinations of instruments and voices in a wide variety of styles. You also study and listen to classical, popular and jazz set works and develop both your knowledge of music history and your aural perception. Challenging areas include essay writing, improving aural perception skills and developing your knowledge and understanding of the theory of music.

WHERE NEXT

Music A level involves a lot of practical, creative work but it is sufficiently rigorous to be accepted as a serious academic subject for entry to most university courses. Possible careers in music include performing, composing/arranging, education, music therapy, music administration and management, music production and the wider creative industries.



MUSIC: BTEC LEVEL 3

MINIMUM ENTRY REQUIREMENTS

GCSE Music grade C or BTEC Level 2 Merit and Grade 5 standard or above on main instrument desirable but not essential. Suitability for the course will be by audition in which you will be required to perform a 2 to 3 minute piece on your principal study and undertake short improvisation and general musicianship tests.

IS THIS COURSE RIGHT FOR ME

The course focuses on performance in both ensemble and solo settings, general musicianship as well as researching and investigating professional practice in the pop music industry and the range of opportunities for solo performance. You will be expected to respond to set performance briefs alongside developing your knowledge of the fundamental rudiments of musical language. The course comprises of 4 units which are: Ensemble Music Performance; Practical Music: Theory and Harmony; Professional Practice in the Music Industry; Solo Performance. Although there is no requirement to have Grade 5 Theory you will have to learn about music theory on the course – it's not entirely practical!

WHAT WILL I STUDY

Studying BTEC Level 3 Music gives you the opportunity to formalise and deepen your knowledge, experience and understanding of the contemporary music industry. You will analyse performance practice and incorporate current trends into your own music making in both solo and ensemble settings as well as strengthening your knowledge of the rudiments of music. This knowledge will then be put into practical use in vocational contexts to deepen your awareness of relationships within the organisations found in today's ever evolving music industry. Although the course is largely practical, and mostly focused on performance of contemporary music, 2 units have externally assessed written exams.

WHERE NEXT

Performing, composing, music production, music/event management, music broadcasting/journalism and the wider creative industries. The rigour of the course will provide the learner with the relevant qualification base to study at university or music conservatoire.



MUSIC THEORY

MINIMUM ENTRY REQUIREMENTS

A level programme requirement.

IS THIS COURSE RIGHT FOR ME

You will develop your ability to read and understand music notation. In doing so, you will gain a deeper awareness of how music is created, be able to sight read music better, perform music more accurately and listen to music with more discernment.

WHAT WILL I STUDY

The course is strongly advised for Music students whose knowledge of Theory is not yet at Grade 5 standard. A pass in Grade 5 Theory is prerequisite for continuation onto the second year of the A level Music course. Tuition is also given in higher level grades up to and beyond Grade 8.

WHERE NEXT

The upper Theory grades are recognised as excellent training for students wishing to study any music-related courses in Higher Education.





PERFORMING ARTS: BTEC LEVEL 3

MINIMUM ENTRY REQUIREMENTS

GCSE English Language grade C/4. You must also have a proven interest in performing, perhaps as a member of drama group / organisation or involved in drama at school.

IS THIS COURSE RIGHT FOR ME

The course has a strong emphasis on practical acting methods and provides opportunities to develop skills in creativity and performance. There will be a mixture of teacher-directed and self-directed tasks, practical workshops, research and independent written work. As a performing arts practitioner you will need to have a good understanding of the work of influential practitioners to inform your own work and professional practice. You will also work collaboratively to create a performance in response to a given stimulus. The course comprises of 4 units which are: Investigating Practitioners, Developing skills and techniques for live performance, Group Performance Workshop, Acting Techniques.

WHERE NEXT

This course provides skills applicable to developing a career in the performing arts industry. You will also be able to progress on to a degree level course in Performing Arts or related fields. Many of the skills are transferable and can be applied to higher level study in many fields or in the world of work.

WHAT WILL I STUDY

The course is suitable for students considering pathways into the Performing Arts industry or Higher Education performance arts training. You will learn how to research, develop and prepare roles for performance in a range of styles and genres. This course will suit dedicated and enthusiastic students with a genuine passion for performing. The ability to work independently and also be effective in a team is vital. The course is heavily assignment based and will suit students who prefer completing coursework as opposed to exams. Goes well with any creative or humanities subject.





PHILOSOPHY: A LEVEL

MINIMUM ENTRY REQUIREMENTS

A level programme requirement with B/6 in English Language or Literature GCSE.

IS THIS COURSE RIGHT FOR ME

In Philosophy, you will encounter the work of some of the greatest thinkers in the western tradition. The Greeks invented western philosophy but the tradition begun with Socrates, Plato and Aristotle has continued uninterrupted up until the present day. You will study aspects of the work of philosophers like John Locke, David Hume, Rene Descartes and Bertrand Russell during the first year of your course in epistemology (the theory of knowledge) and ethics. You will be expected to develop a critical and evaluative approach to their arguments and you will learn how to construct and develop your own responses to them.

WHAT WILL I STUDY

Philosophy is a stimulating subject, but a demanding one. You must be prepared to read, think and write about ideas and concepts which can be difficult to understand but you will learn to identify strengths as well as weaknesses in many standard arguments of the philosophical tradition. In addition, you will develop the skill of constructing your own arguments in response to the arguments of others and you will be expected to develop your own point of view in relation to a range of philosophical questions.

WHERE NEXT

Philosophy has a very wide application in future careers. Due to its concentration on thinking about difficult ideas and challenging concepts you will be able to use these transferable skills in a wide range of employment contexts. A good number of our students go on to study philosophy at university and specialise in fields such as ethics, political philosophy, epistemology, metaphysics and aesthetics. Philosophy graduates work in a very wide variety of fields including the law, politics, the civil service and in academia as well as in industry and commerce, where they are valued for their analytical skills.





PHOTOGRAPHY: A LEVEL

MINIMUM ENTRY REQUIREMENTS

A level programme requirement. A charge for materials applies to this course; bursaries and payment plans are available.

IS THIS COURSE RIGHT FOR ME

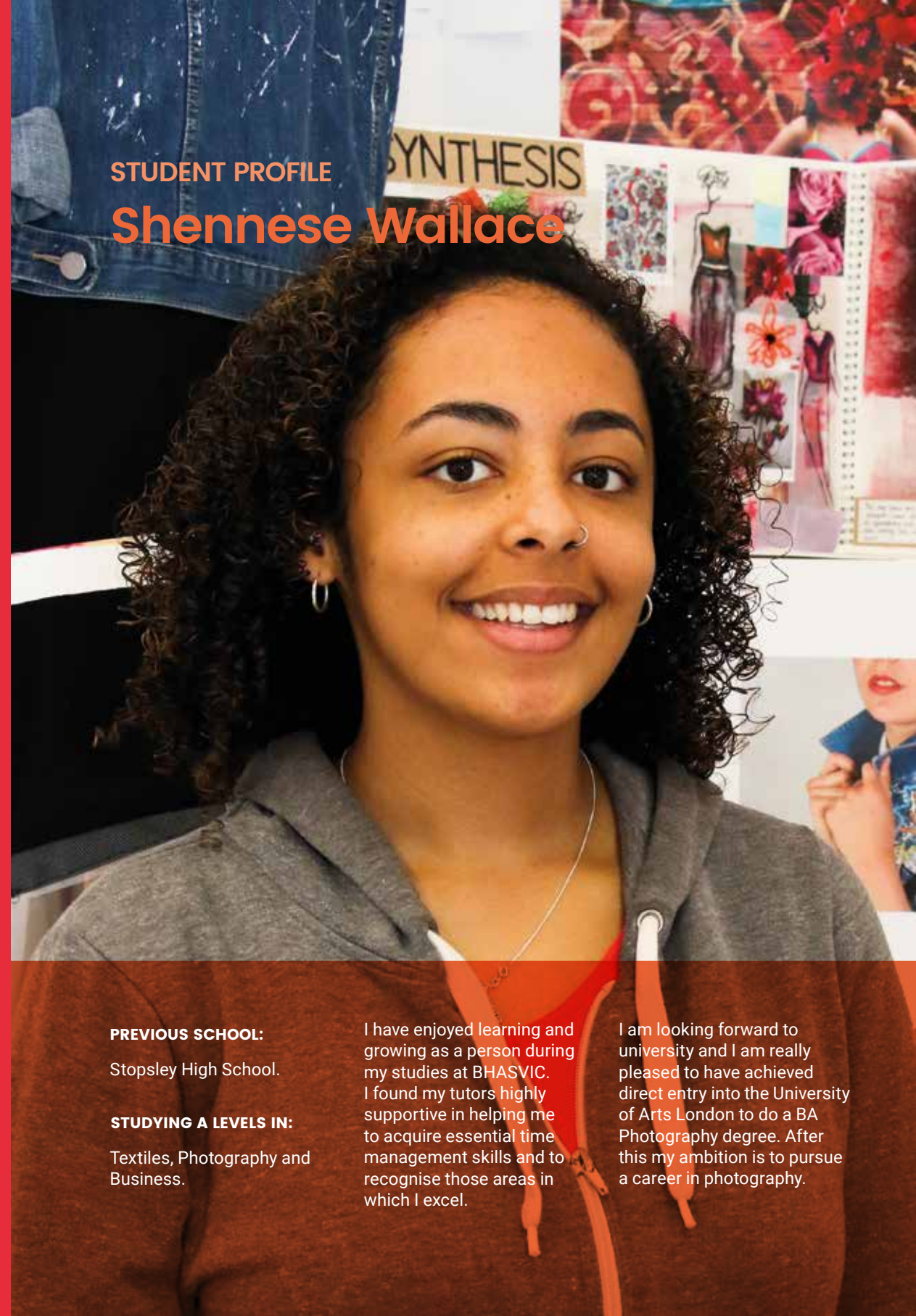
Our grade one outstanding course focuses on learning photographic processes that give you the skills to create individual, expressive work. This covers black and white photography which is darkroom based and colour photography using digital techniques using PCs, Photoshop CS6 software, laser/inkjet printers, lenses, lighting kits and studio techniques.

WHAT WILL I STUDY

Are you ambitious, motivated and creative? This course is a practical making/creating course which uses a vast range of specialist materials and art techniques. Our Practical Portfolio coursework is supported by a 3000 word contextual/personal study essay and Exam Unit. Learning to use traditional and digital SLR cameras helps you develop technical skills alongside creative and expressive ways of working preparing you for further study and employment in the photographic creative industries.

WHERE NEXT

We have a supportive and structured Visual Arts career progression programme to help you with your next steps into Higher and Further Education courses. Students progress on to careers in the creative industries such as fashion photography, photo journalism, commercial photography, photo editing, film/animation, television, media and advertising.



STUDENT PROFILE

Shennese Wallace

PREVIOUS SCHOOL:

Stopsley High School.

STUDYING A LEVELS IN:

Textiles, Photography and Business.

I have enjoyed learning and growing as a person during my studies at BHASVIC. I found my tutors highly supportive in helping me to acquire essential time management skills and to recognise those areas in which I excel.

I am looking forward to university and I am really pleased to have achieved direct entry into the University of Arts London to do a BA Photography degree. After this my ambition is to pursue a career in photography.



PHYSICS: A LEVEL

MINIMUM ENTRY REQUIREMENTS

A level programme requirement with B/6 in Maths GCSE and 2 Bs in 2 Sciences at GCSE including Physics or Additional Science (not Applied Science).

IS THIS COURSE RIGHT FOR ME

You will study forces, motion, electrons, waves and photons in the first year. Throughout this course and especially in the second year you will apply your knowledge to astrophysics, motion and electromagnetism. You will learn how to use physical quantities and units, scalars and vectors. Practical work is an important aspect, and students generally do one a week (no separate coursework component); students keep a lab book to evidence their skills. Goes well with Maths, Chemistry, Biology, Computing in particular.

WHAT WILL I STUDY

Successful Physics students enjoy Maths and particularly Algebra. They are curious about how things work and thrive on the challenges of problem solving. They work effectively both on their own and in groups. They work carefully and with precision in both their practical and written work. Students will succeed most if they are self-motivated independent learners. Flipped learning is used for all topics, lessons are interactive and build upon independent study. There are lots of opportunities to get help and support from the department.

Mathematical fluency is vital for success at A level. We run an 'in-house' Maths for Physics course for students who do not do A level Maths but this does not lead to a qualification.



WHERE NEXT

Physics is useful for a very wide range of careers. Other than Pure Physics you could consider careers in Engineering, Astrophysics, Geophysics, Materials Science, Forensic Science. Our students go on to careers in these disciplines as well as Medicine, Mathematics, Computing, Finance, Law and many other areas.





POLITICS: A LEVEL

MINIMUM ENTRY REQUIREMENTS

A level programme requirement with C/4 in English Language GCSE.

IS THIS COURSE RIGHT FOR ME

In your first year, you will undertake a thorough and comprehensive study of the political system of the United Kingdom. You will study the institutions of UK government – Parliament, the Constitution and the judicial system in addition to a study of political parties, elections and pressure groups. You will also study a variety of ideological traditions, including socialism, liberalism and conservatism. In year two you will specialise in the government and politics of the United States, or global politics and you will also undertake the study of the ideology of nationalism.

WHERE NEXT

Many of our students go on to study Politics or International Relations at university. Others go on to courses in American Studies or to combine Politics with other courses like Philosophy and Economics. The study of Politics will give you a detailed understanding of how political systems work, and how decisions about governing in a modern democracy are made. Politics is therefore a very good choice for careers in a wide variety of fields such as the civil service, education, the law and the voluntary sector as well as in business and commerce.

WHAT WILL I STUDY

If you have an interest in current affairs and enjoy debate and discussion, this course is for you. Everyone is affected by politics and the actions of politicians therefore studying and talking about politics are a necessary part of the life that we lead. You must enjoy reading about current affairs and watching programmes such as Question Time and the Daily Politics show, and you must be interested in how and why decisions are made by politicians in a democratic system.

BHASVIC



I went to BHASVIC and now I strive to break the cycles of inequality faced by young people in the UK today.”

Jatin Patel, Policy and Campaigns Manager



PSYCHOLOGY: A LEVEL

MINIMUM ENTRY REQUIREMENTS

A level programme requirement with C/4 in Maths GCSE and C/4 in English Language or Literature GCSE.

IS THIS COURSE RIGHT FOR ME

Topics include conformity, obedience, resisting obedience, influences on social change, memory and why we forget, Eye-witness testimony, development of attachments, maternal deprivation, orphan studies, definitions of abnormality, the causes and treatments of mental disorders: phobias; depression; OCD; schizophrenia, origins of psychology, approaches to psychology, the nervous system, neurons and synaptic transmission, brain localization, biological rhythms, the endocrine system, gender identity, forensic (criminal) psychology.

WHAT WILL I STUDY

Students must be interested in people, why people do things, say things and think things. Students must have an open mind, and be able to change their opinions in light of scientific evidence. Students must be really keen to develop their evaluative skills, using self-reflection and peer work. Students must realise that Psychology is a rigorous scientific discipline and will be expected to work hard. Students will be supported in and out of lessons through challenging concepts, and will be expected to work independently and collaboratively throughout an ultimately rewarding two years. You will need good Maths and English skills.

WHERE NEXT

Psychology A level is useful in all careers, especially for those which deal with people. To work as a professional psychologist or psychiatrist, a good Psychology degree and post graduate qualifications are usually required, although there are other routes in. Especially good for uniformed services, Medicine, Social work, Education and Business.





SOCIOLOGY: A LEVEL

MINIMUM ENTRY REQUIREMENTS

A level programme requirement with C/4 in English Language or Literature GCSE.

IS THIS COURSE RIGHT FOR ME

Sociology explores society and the interaction between institutions and individuals. You will study research in areas such as culture, socialisation, youth subcultures, globalisation and the digital world, crime and deviance and social inequality. Students will explore how sociologists use a range of research methods to gather data. Exciting areas of the syllabus are studying digital social media (Year 1) and crime and deviance (Year 2).

WHAT WILL I STUDY

Do you analyse people and their behaviour? Do you like to see two sides of an argument? Are you interested in why men are more criminal than women? Why are some people so rich and others so poor? If so then Sociology may be for you. Sociology is an independent reading and essay based course. Students will take active part in discussing ideas with their peers and as a whole class on a regular basis. We do flipped learning so students prepare for lessons at home and we establish what students know, then analyse and evaluate ideas. Complementary courses are Psychology, Health and Social Care, History, English and Geography. Students take three exams at the end of the second year, there is no coursework.

WHERE NEXT

Many students go on to study Sociology at university and a career in the social sciences. Sociology is part of the training for many careers in the Criminal Justice system, Social Services and Teaching. Students have also gone on to exciting careers in Marketing, Journalism and the Media.





SPANISH: A LEVEL

MINIMUM ENTRY REQUIREMENTS

A level programme requirement with B/6 in Spanish GCSE and C/4 in English Language GCSE.

IS THIS COURSE RIGHT FOR ME

You will learn to communicate fluently in the language both orally and in writing. You will read and listen to authentic material in order to develop your comprehension skills and your knowledge of the culture. You will study topics relevant to the country/countries where the language is spoken.

WHAT WILL I STUDY

Did you enjoy the language at GCSE? Do you want to become fluent and develop your linguistic and cultural knowledge? Good linguists are risk takers and naturally inquisitive. At this level you need to be rigorous in your learning and very accurate in your application of knowledge.

WHERE NEXT

Linguists are increasingly in demand in the world of work. You may consider a degree purely in Languages / Linguistics / European Studies, leading to a wide variety of careers including, but not limited to, translation, interpreting, teaching, publishing, journalism and marketing. A language can also be combined with most subjects at Higher Education level, for example Law, International Relations, Politics, Media, Business or Sciences.





PHYSICAL EDUCATION: A LEVEL

MINIMUM ENTRY REQUIREMENTS

A level programme requirement with C/4 in Science GCSE, C/4 in English Language GCSE and B/6 in Physical Education GCSE. Club-level standard practical performance within one selected sporting activity.

IS THIS COURSE RIGHT FOR ME

Areas studied are applied anatomy and physiology, exercise physiology, biomechanics, skill acquisition, sports psychology, sport and society and contemporary issues in physical activity and sport. This course will be assessed via one exam assessment at the end of the second year to cover all of the modules taught. Practically you will also be assessed in one sporting activity, alongside an oral analysis of sporting activity performance.

WHAT WILL I STUDY

To study this course you need to be a keen sportsperson who has an interest in the theoretical content of sport as the course covers a wide range of these concepts.

WHERE NEXT

Physical Education is a well established A level and fully recognised by all universities. It could be combined very successfully with many other courses. It provides excellent progression for those wishing to continue studying Sport or Sports Science at either university or college.





SPORT AND EXERCISE SCIENCES: BTEC LEVEL 3

MINIMUM ENTRY REQUIREMENTS

Vocational programme requirement with C/4 in English Language GCSE or Maths GCSE; and C in Science GCSE.

IS THIS COURSE RIGHT FOR ME

We offer Single, Double and Triple courses in Sports and Exercise Sciences. The academic and vocational application of understanding and knowledge in diverse topics such as Sport Psychology, Biomechanics, Physiology, training and essential research methods and data analysis. Learning is partly through university laboratory visits and vocational guest speakers.

WHAT WILL I STUDY

These are academically demanding and applied courses suiting analytical students with a strong science understanding. You must be a committed and independent learner with the personal management skills to meet coursework deadlines. Learning and assessment varies to parallel workplace and university style demands, with some external examination and coursework assessment. You will receive excellent staff support for achieving excellent results, while enriching your study skills and personal development.

WHERE NEXT

Sports Science is the ninth most popular university route from BHASVIC, providing credible progression to both university degrees and the workplace. Some careers include: teaching, physiotherapy or sports therapy, coaching, journalism and research. transferable and highly valued skills also allow for non-course based study and employment.





SPORT: BTEC LEVEL 3

MINIMUM ENTRY REQUIREMENTS

Vocational programme requirement with C/4 in English Language GCSE or Maths GCSE.

IS THIS COURSE RIGHT FOR ME

This is a two year course which will give you the equivalent of two A levels over this time. It is portfolio based and has continual assessment throughout. You will visit university and colleges to experience specialised sports equipment.

WHAT WILL I STUDY

We offer Single, Double and Triple courses in Sport. The course includes the fundamental sport topics such as coaching, fitness testing, practical sports, outdoor education and physiology to name a few. These topics allow you to access a wide range of study skills and interests within the course, which has a practical bias.

WHERE NEXT

Our students move on to study sport or coaching at Higher Education. You will gain the skills to pursue careers in sport such as sports coaching, teaching or other related leisure industry employment.





SPORTS PERFORMANCE: BASKETBALL / FOOTBALL / RUGBY / NETBALL

MINIMUM ENTRY REQUIREMENTS

A level programme requirement required. You do not need to be taking a sports course to be a part of the sports performance programme.

IS THIS COURSE RIGHT FOR ME

You need to have proficiency and interest in the sport of your choice. This can be taken alongside your course choices throughout your time at college.

WHAT WILL I STUDY

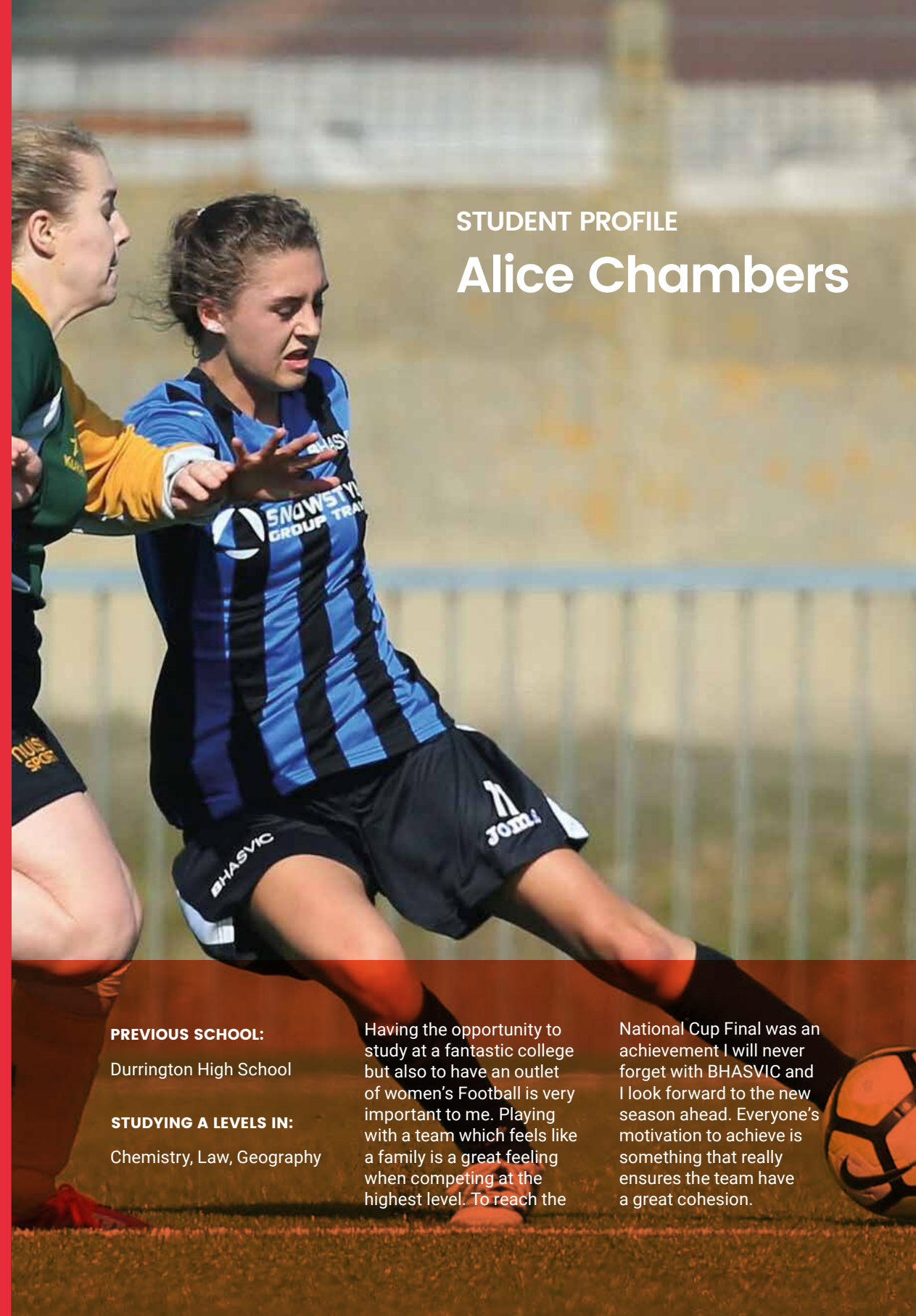
This is a practically based course where you will have the opportunity to develop your technical ability and fitness in your chosen sport during the college day. You will take part in weekly training sessions with qualified coaches and have the opportunity to represent the college at a local and national level.

WHERE NEXT

You will have the opportunity to be put forward to regional and national trials which may lead to scholarship opportunities for the selected sport.

STUDENT PROFILE

Alice Chambers



PREVIOUS SCHOOL:

Durrington High School

STUDYING A LEVELS IN:

Chemistry, Law, Geography

Having the opportunity to study at a fantastic college but also to have an outlet of women's Football is very important to me. Playing with a team which feels like a family is a great feeling when competing at the highest level. To reach the

National Cup Final was an achievement I will never forget with BHASVIC and I look forward to the new season ahead. Everyone's motivation to achieve is something that really ensures the team have a great cohesion.



TEXTILE DESIGN: A LEVEL

MINIMUM ENTRY REQUIREMENTS

A level programme requirement. A charge for materials applies to this course; bursaries and payment plans are available.

IS THIS COURSE RIGHT FOR ME

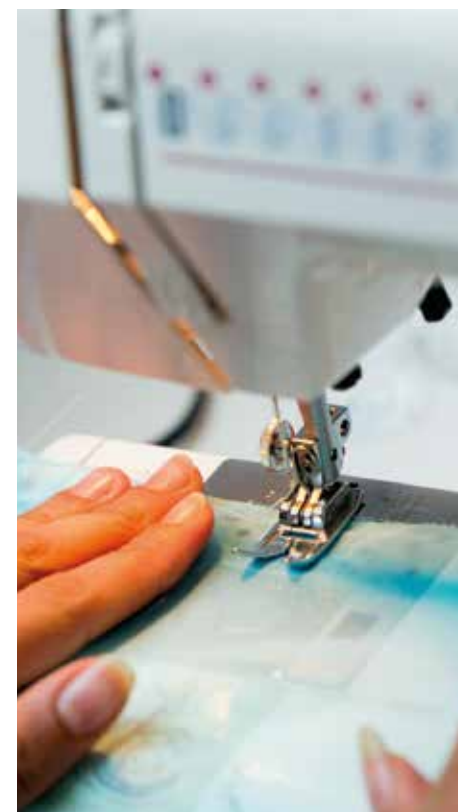
Our grade one outstanding course in Textile Design has the emphasis on the expressive and experimental aspects of the Textiles medium. You study the processes, skills, concepts and ideas associated with Textiles, Art and Design. This course does not include traditional pattern cutting but does include making concept garments.

WHAT WILL I STUDY

Are you ambitious, motivated and creative? Our Practical Portfolio component supported by 3000 word contextual study essay and Exam Unit will challenge you. You will learn block printing, batik, felt making, hand dyeing, weaving, concept garment making, and creative use of the PC using Photoshop to create designs and creative outcomes. Assessment will be by 60% practical portfolio and 40% practical exam.

WHERE NEXT

We have a supportive and structured Visual Arts career progression programme to help you with your next steps into Higher and Further Education courses. Students progress on to careers in the creative industries such as fashion and textiles design, styling, fashion marketing and business, interior design, textiles, merchandising and fashion communications.



Second Year Portfolio Courses

In your second year at BHASVIC you will be able to take an additional course to supplement your learning. Some of these courses are designed purely for fun and enrichment and do not lead to a qualification, others give you an additional qualification and help enhance your knowledge and experience in areas that may help give you the edge in your chosen pathway destination.

PORTFOLIO COURSES:

- Advanced Apprenticeship in Sporting Excellence (AASE) Basketball
- BHASVICtv
- British Sign Language
- Creative Writing
- Current Affairs
- Digital Art
- Duke of Edinburgh
- Extended Project (see next page)
- Film Club
- Financial Education
- Fitness Instructor
- French for Beginners
- Geographical Information Systems
- Graphics
- Historiography
- History of Ideas
- Interactive Media
- IT in the Workplace
- Italian for Beginners
- Journalism Foundation Certificate
- Journalism Portfolio
- Latin for Beginners
- Life Drawing
- Mathematics GCSE Improvement for University
- Mathematics, Further AS Level
- Maths for Chemistry Support
- Maths for Physics Support
- Mindfulness
- Music Theory Grades 5 - 8
- Nutrition & Improving Personal Exercise
- Painting
- Peer Performance
- Photography
- Science for Society
- Spanish for Beginners
- Sport Performance (for those playing in Football, Rugby, Netball and Basketball teams)
- Sports Leadership
- Textiles
- Western Music
- Young Enterprise

Extended Project Qualification

One of the most popular Portfolio courses is the Extended Project Qualification (EPQ)

EXTENDED PROJECTS

The Extended Project Qualification (EPQ) is very popular with both students and University Admission Tutors. The EPQ is equivalent to half an A level and it is possible to gain an A* (and many BHASVIC students do!). It is a project based piece of work that allows you to research and write or create in an area that you are interested in.

BHASVIC offers an exciting range of nine Extended Projects routes. These include projects themed around Economics and Business, Creative and Media areas, Society, Global Perspectives, Real World and Historical Studies, and Science. Students are inspired by their chosen areas of research and can choose their own project title. To give you a taste of their diversity, the following areas of research have been submitted for projects: 'Should we surrender our DNA at birth?'; 'How music production can change a sample of music'; 'The influence of Scandinavian folk-wear on the British fashion industry'; 'The morality of horse racing'; 'Restricting advertising to children'; 'The necessity of feminism'; 'Do numbers really exist?'

The project gives you an advantage in university applications and job interviews because the nature of the course gives you lots to discuss and an ability to illustrate your interests beyond your main course. There are two timetabled sessions a week for the project, with some of these involving whole class teaching of research skills and methodologies or debates around themed topics.

An important aspect of the final assessment for the project is a presentation, so you will be encouraged to build your confidence and skills in presenting. The final project you produce will be assessed by your teacher and moderated externally by the Examination Board. The Extended Project is offered as a portfolio course in the second year pathway options.

The BHASVIC Timetable

At college you can divide your time between timetabled lessons, tutorial, private study and socialising. You will have lessons for a minimum of 13.5 hours a week plus tutorial time (and enrichment if you opt for it). Outside of lessons you should spend a further 13 hours on private study and homework across your courses per week. Working for up to eight hours a week in part-time employment is very positive but any more than this is likely to negatively affect your studies and achievement.

	MONDAY	TUESDAY	WEDNESDAY	THURSDAY	FRIDAY					
8.30	A 8.30-10.00	E 8.30-10.00	C 8.30-10.00	F 8.30-10.00	D 8.30-10.00					
8.45										
9.00										
9.15										
9.30										
9.45	BREAK	BREAK	BREAK	BREAK	BREAK					
10.00										
10.15						B 10.15-11.45	F 10.15-11.45	D 10.15-11.45	G 10.15-11.45	C 10.15-11.45
10.30										
10.45										
11.00										
11.15										
11.30	LUNCH 11.45-12.30	LUNCH 11.45-12.30	LUNCH 11.45-12.30	LUNCH 11.45-12.30	LUNCH 11.45-12.30					
11.45										
12.00										
12.15										
12.30						C 12.30-14.00	G 12.30-14.00	B 12.30-14.00	E 12.30-14.00	F 12.30-14.00
12.45										
13.00										
13.15										
13.30										
13.45	BREAK	BREAK	BREAK	BREAK	BREAK					
14.00										
14.15						D 14.15-15.45	A 14.15-15.45	E 14.15-15.45	A 14.15-15.45	G 14.15-15.45
14.30										
14.45										
15.00										
15.15										
15.30	Meeting/Training Slot	5 MINUTE BREAK	Sport/ Enrichment	Meeting/ Training Slot	Meeting/ Training Slot					
15.45										
16.00										
16.15										
16.30										
16.45	B 15.50-17.20									
17.00										
17.15										
17.30										

Note: The timetable structure is subject to change year on year and the above is for illustrative purposes only.

Applying to BHASVIC

We welcome applications from students irrespective of their disability, family responsibility, marital status, race, colour, ethnicity, nationality, religion or belief, gender or sexual orientation.

BHASVIC, Varndean College and Brighton Metropolitan College (formerly City College Brighton) operate a joint application process. To apply you need to fill in an online application form on the website of your first choice college and can add either of the other two colleges as a second and third choice.

In the event of oversubscription, we will offer places to students in the order specified in our Admissions Policy which is available from the college and on the BHASVIC website.

If BHASVIC is oversubscribed, we will give priority to students whose application forms reach the college on or before the first Friday in December by 5pm.

SUPPORTING AND INFORMING YOUR APPLICATION

To help you decide if a sixth form college is the right environment for you, and that BHASVIC in particular is the right place for you to study, it is a good idea to do some homework before you write your application. Our website www.bhasvic.ac.uk has plenty of information to help you research the courses and options that are right for you. We often visit school careers fairs and information evenings to present to you and your parents and to answer any questions you might have. Our Open Evenings in November are also a great opportunity for you to come and see us, visit departments and ask any questions.

You can also join one of our small group tours from December to June (please phone to book), or visit our website for more information at www.bhasvic.ac.uk.

For any matters concerning applications, please contact **Denise Mansfield (Admissions Manager)** at the college; admissions@bhasvic.ac.uk or telephone 01273 859810.

Summary of the Application Process

SEPTEMBER 2017 – START PLANNING

Start planning early! This time next year you could be a BHASVIC student, so think ahead. Make the most of information in this prospectus and on our website, along with information sessions at your school. Start to get an idea of what courses you think you might want to do, what the entry requirements are and what qualifications you need to have to get into future degree courses or careers you might have in mind.



NOVEMBER 2017 – OPEN EVENINGS

There are two Open Evenings in November for prospective students and parents to visit the college. These give you a fantastic opportunity to see the college and facilities, to hear from the Principal about the college's ethos and culture and to visit departments and find out more about the courses you are interested in. You will also get a chance to speak to lots of current students who will be the best source of information on what college is really like!



DECEMBER 2017 – APPLICATION DEADLINE

Make sure your application is submitted by the first Friday in December by 5pm, to be considered a priority applicant.

NOVEMBER 2017 TO EASTER 2018 – INTERVIEWS AND OFFER LETTER

If you are a UK student and we have received your application form by the first Friday in December by 5pm, you will normally be given an admissions interview at the college. We consider your current progress by looking at your most recent school report and attendance, and discuss your intended programme of study, entry conditions and future career. If we are able to make you an offer, we will normally do so within two weeks of your interview (although students who are interviewed before Christmas will not receive an offer until January). You must accept your offer of a place at BHASVIC within two weeks of receiving an offer letter.



JULY 2018 – MOVING ON DAY FOR STUDENTS NEW PARENTS INDUCTION EVENINGS

Once you have accepted your place at the college, you will be invited to our Moving On day in late June or early July (as soon as GCSE exams have finished) when you come to have induction lessons and confirm your course choices. We also run Parents' Induction evenings where parents can find out more about our guidance and support systems.

AUGUST-SEPTEMBER 2018 – RESULTS AND ENROLMENT

When you receive your GCSE results in August, we can offer you advice via our Results Advisory Service. At the very end of August or beginning of September you will have an enrolment interview to finalise your course ready for you to become an official BHASVIC student.



SEPTEMBER 2018 – INDUCTION

Around the second week in September our full teaching timetable will start and you will begin your time as a student with an induction session which will ensure you know everything you need to know to make the best start here at BHASVIC.

Course List

Course	Qualification	Page Number
Art (Fine Art)	A	34
Biology	A	36
Business (Various)	A / BTEC	38
Chemistry	A	42
Classical Civilisation	A	44
Computing (Various)	A / BTEC	46
Creative Digital Media Production	BTEC	50
Dance	A	54
Drama and Theatre Studies	A	56
Economics	A	58
English (Various)	A / GCSE	60
Environmental Science	A	66
Film Studies	A	68
French	A	70
Geography	A	72
German	A	74
Graphic Design and Communication	A	76
Health and Social Care	BTEC	78
History	A	80
IT	BTEC	82
Law (Various)	A / BTEC	84
Maths (Various)	A / GCSE	86
Media Studies	A	90
Music (Various)	A / BTEC / Grades 5-8	92
Performing Arts	BTEC	96
Philosophy	A	98
Photography	A	100
Physics	A	102
Politics	A	104
Psychology	A	106
Sociology	A	108
Spanish	A	110
Physical Education	A	112
Sport (Various)	BTEC	114
Textile Design	A	120



HOW TO FIND US


Brighton Hove & Sussex
 Sixth Form College
 205 Dyke Road
 Hove BN3 6EG

CONTACT INFORMATION

General Enquiries:
 Telephone: 01273 552200
 Fax: 01273 563139
 Website: www.bhasvic.ac.uk

Admission Enquiries:
 Admissions/Schools Liaison Manager: Denise Mansfield
 Admissions Direct line: 01273 859810
 Admissions Email: admissions@bhasvic.ac.uk

 /Bhasvic.ac.uk

 @BHASVIC

bhasvic.ac.uk

