

The Student Room

UNIGUIDE - CHOOSING COURSES/ SUBJECTS

Informed Choices

Choosing the right subjects to study post-16 is very important in helping you to get into university, particularly a Russell Group university.

If you don't know what degree subject you want to study, it's important to choose A Levels (or equivalent qualifications) that keep as many options open to you.

Whatever your situation, Informed Choices can give you the start you need in deciding what to do next.

RUSSELL GROUP - INFORMED CHOICES



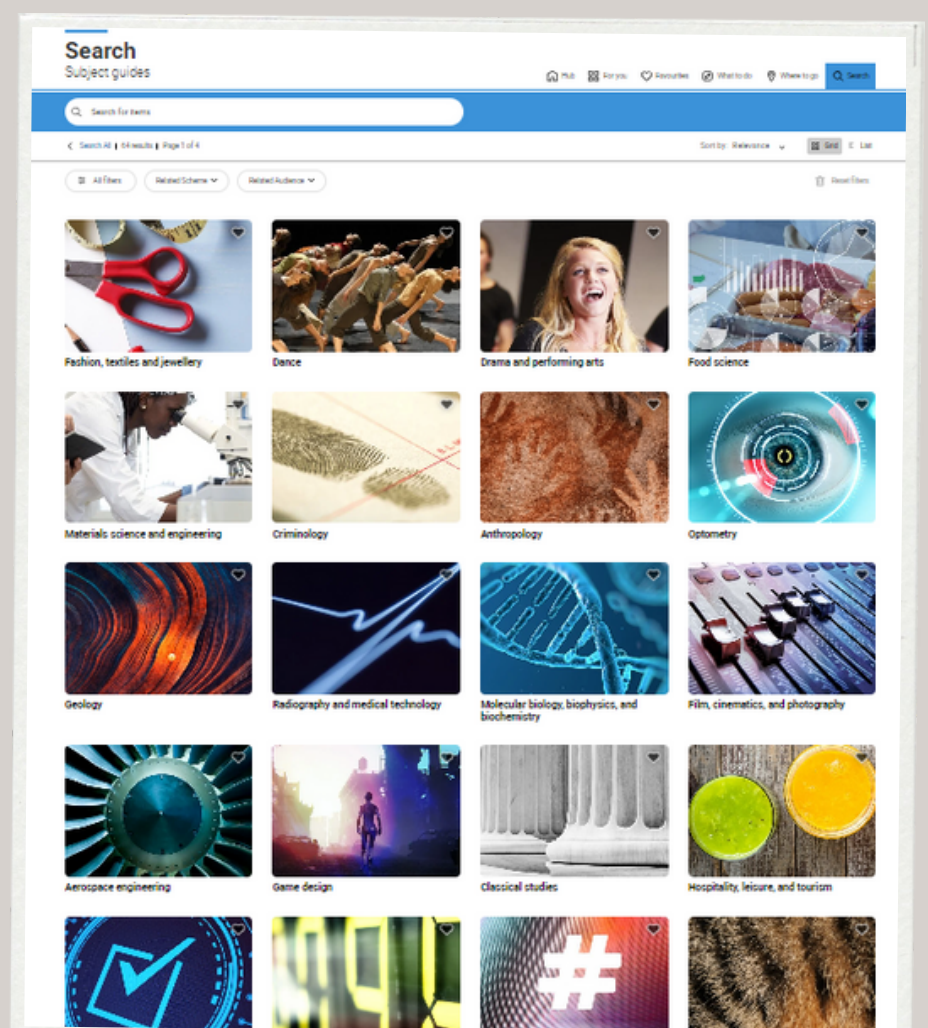
RATE MY APPRENTICESHIP GUIDE

BHASVIC

WIDENING PARTICIPATION AND WORK EXPERIENCE

CAREERS RESOURCES

Scan the QR code and click on the Careers Section to access the links



CAREERS AND YOUR SUBJECTS (UCAS)

SEE WHAT SUBJECTS STUDENTS WITH YOUR A-LEVELS GOT INTO

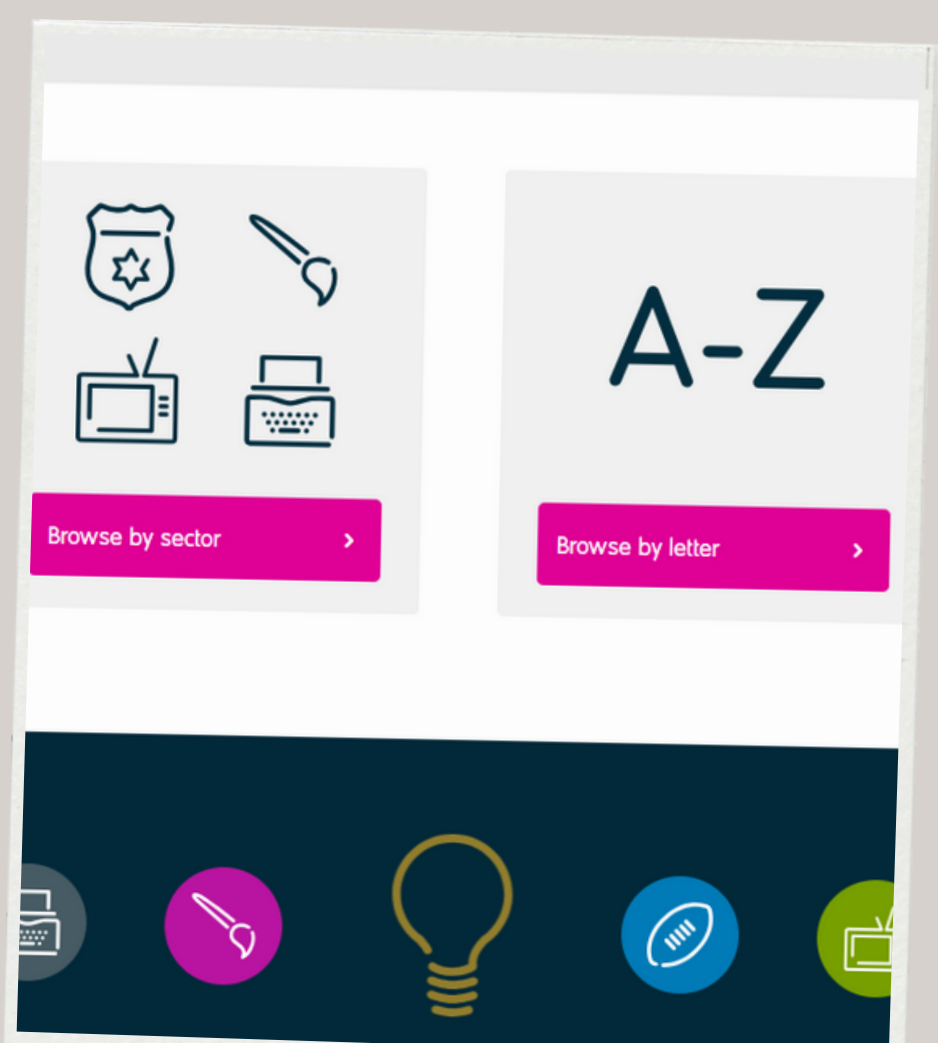
Aural and Oral Sciences not elsewhere classified
Pharmacology English Language Training Teachers - Primary
Mental Health Nursing
Ancient History Military History Psychology Psychology not elsewhere classified
Sociolinguistics History by period Biometry
Linguistics Law by area Music not elsewhere classified
Radiography, diagnostic Philosophy
Subjects Allied to Medicine not elsewhere classified
Linguistics not elsewhere classified
Law not elsewhere classified



SACU CAREERS QUIZ
A LEVEL EXPLORER



FIND OUT MORE ABOUT APPRENTICESHIPS - GOV.UK



PROSPECTS JOB PROFILES