

# BHASVIC

BRIGHTON HOVE AND SUSSEX SIXTH FORM COLLEGE

# 2020

PROSPECTUS





# Open Evening

Wednesday 13 November, 6.30 - 9.00pm

Thursday 14 November, 6.30 - 9.00pm

Apply to BHASVIC online at [www.bhasvic.ac.uk](http://www.bhasvic.ac.uk)

For more details about applying, see page 151

*'Between the Downs and Sea we flourish'*

The BHASVIC logo is based on the words taken from the city crest.

# Welcome to BHASVIC

The experience of being a BHASVIC student will be something that you will remember for the rest of your life. Studying here is a rewarding and enriching experience. You will be part of a culture of academic excellence with aspirational standards aimed at securing the best outcomes for you. Our results are testament to this and are consistently some of the best in the country.

At BHASVIC you will be treated as an adult and teachers will work with you as a co-creator of your own learning. You will be taught more than just course content; we will ensure you develop the skills you need to be an independent, lifelong learner with the ability to think for yourself. On top of this, our first-class student services and guidance staff will ensure you are well supported at every step of the way.

Outside of lessons you will be part of a vibrant community with opportunities to engage in a wide range of activities that ensure there is something to suit everyone. We are a stimulating place to be, at an exciting stage of your life! BHASVIC is a contemporary, creative, learning community and we look forward to you being a part of this when you start in September 2020.



William Baldwin  
**PRINCIPAL**



# Contents

<b>SIX REASONS TO MAKE BHASVIC YOUR SIXTH FORM</b>	<b>4</b>
<b>BHASVIC – A CONTEMPORARY CREATIVE LEARNING COMMUNITY</b>	<b>6</b>
<b>WHAT IS SPECIAL ABOUT SIXTH FORM COLLEGES?</b>	<b>10</b>
<b>AN ALL-ROUND EDUCATION: SUBJECTS, SKILLS, VALUES, BREADTH</b>	<b>11</b>
<b>BHASVIC: RAISING ASPIRATIONS</b>	<b>12</b>
<b>YOUR STUDY PROGRAMME</b>	<b>16</b>
<b>VOCATIONAL AND PRACTICAL PROGRAMMES</b>	<b>20</b>
<b>DEDICATED SUPPORT FOR YOUR SIXTH FORM STUDY</b>	<b>21</b>
<b>PREPARING FOR LIFE AFTER BHASVIC</b>	<b>22</b>
<b>EQUALITY, DIVERSITY AND INCLUSION</b>	<b>25</b>
<b>RESOURCING YOUR LEARNING</b>	<b>26</b>



<b>GETTING INVOLVED IN WIDER OPPORTUNITIES AT BHASVIC</b>	<b>28</b>
<b>ADDITIONAL LEARNING SUPPORT</b>	<b>32</b>
<b>ENGLISH AS SECOND OR OTHER LANGUAGE (ESOL)</b>	<b>32</b>
<b>THE STUDENT UNION</b>	<b>34</b>
<b>LIFE AFTER BHASVIC – WHERE NEXT?</b>	<b>36</b>
<b>COURSE INFORMATION PAGES</b>	<b>40</b>
<b>ENTRY REQUIREMENTS</b>	<b>146</b>
<b>SECOND YEAR PORTFOLIO COURSES</b>	<b>149</b>
<b>THE BHASVIC TIMETABLE</b>	<b>150</b>
<b>APPLYING TO BHASVIC</b>	<b>151</b>
<b>COURSE LIST</b>	<b>154</b>

6

REASONS **THE**

*to make*  
**BHASVIC**  
**YOUR**  
**FORM**



T

1

**EXCELLENT RESULTS**

BHASVIC is in the top 1% of state schools and colleges for both our exam results and for 'progress' outcomes which measure the value we have added to your learning. There are very few schools or colleges that can claim this status!

2

**SATISFACTION**

Over 90% of students have a great experience at BHASVIC; 96% of staff would recommend BHASVIC as a good place to work; Ofsted graded BHASVIC as Outstanding in their last inspection visit.

3

**FUTURE READY**

9 out of 10 BHASVIC students who study a degree gain a 1st or 2:1 - an average well above the national for both state and independent schools.

4

**EXCELLENT SUPPORT**

First class student services and academic support, along with dedicated tutorial pathways - including University (1,120 applications processed last year); Oxbridge (46 offers); Medicine, Dentistry & Veterinary (25 accepted places); Art Foundation (100 applications) and Employability and Enterprise pathways (with integral work experience!)

5

**CHOICE AND FLEXIBILITY**

Great range of courses – specialise or keep your options open! Over 40 subjects allowing well over 20,000 combinations of courses.

6

**CULTURE**

A learning culture ensures students work hard, enjoy studying and make the most of social and enrichment opportunities. Our students tell us they like the informal but purposeful atmosphere in the college, as well as having more independence than at school. Teachers treat you as a young adult who takes responsibility for themselves and their work, but who may require support and guidance to achieve this.

## CONTEMPORARY

Although our roots are in an old Grammar School there is a modern feel to BHASVIC. In September 2020 we plan to open our new building which will provide first class accommodation for Drama, Performing Arts, Music, Media, Film and Biology. This will create additional modern spaces around college to enhance your time at BHASVIC.

## CREATIVE

Learning is a creative process, teaching is a creative job, our students are creative people and Brighton is a creative hub! We encourage creative and collaborative approaches here at BHASVIC, allowing our teachers the freedom to innovate and experiment with the best ways of engaging with you to enrich and extend your learning. At BHASVIC you will be as well prepared as you can be to surpass your potential.

▼ Artist's impression of our new building set to open September 2020.





## LEARNING

Learning is at the heart of what we do. There is a learning culture at BHASVIC that students bring with them - here it is acceptable to love learning, to study hard, to be doing well and developing a passion for your courses. This phase of study is fantastic – you will learn to a depth that will be both fascinating and challenging. At BHASVIC you will begin to feel like a true expert in your chosen courses and there will be opportunities to showcase your skills and expertise in all subjects that are studied.

## COMMUNITY

We are an inclusive and accepting college where every individual feels part of a community and has a sense of belonging. There are plentiful opportunities to engage with our own extensive range of enrichment, clubs and societies, awards and competitions as well as the wider local community outside of BHASVIC.







# What is special about Sixth Form Colleges?

**Sixth form colleges are the home of dedicated 16-18 education, facilitating the best post-16 academic provision and outcomes with a reputation for inspiring and nurturing a love of learning and high academic achievement.**

Sixth form colleges are responsible for around a fifth of the A levels delivered in England each year and help their students to achieve better exam results than all other non-selective providers.

Sixth form colleges are specialists focusing their entire staffing and resources on delivering 16-19 education with teaching, learning and guidance specialised for this age group.

Sixth form colleges provide exceptional support and resources for preparing for adult life, including applications to University and careers advice.

Students educated at a Sixth form college achieve a higher A level point score per entry than school sixth forms. Students (including disadvantaged students) educated at a Sixth form college are more likely to progress to a UK University, are more likely to continue into their second year and are more likely to progress to the most selective institutions than students educated elsewhere in the state system.

Students attending Sixth form colleges who wish to progress to employment after completing their studies are more likely to do so than those at other state schools or colleges.

Data taken from Sixth Form College Association: Key facts and figures publication.



# An all-round education: Subjects, Skills, Values, Breadth

**Our mission at BHASVIC is to ensure that you receive an all-round education that prepares you to be an independent lifelong learner. We want you to make the most of the opportunities available here that will enable you to realise your potential.**

## **SUBJECTS**

A levels and/or BTECs (along with English or Maths GCSE for those who need it) will form the foundation of your timetable at BHASVIC. Learning here will go deeper than the course content you are required to know – doing well at this level requires you to be able to manipulate knowledge which means you have to understand it. We ensure you will develop the skills to be able to do this.

## **SKILLS**

Learning how to learn requires that you have the study skills and abilities to know how to manipulate knowledge, solve problems and make connections. On top of that it involves knowing how to manage your time and work independently. We will help you reflect on your studies and your progress and identify skills you need to develop, not just to ensure you do well in your courses. When you leave us, you will be well prepared for your future as a lifelong, independent learner, and be very well prepared to be successful in your next steps into further study or work.

## **VALUES**

We want to ensure that you leave here informed and aware of your role as a citizen at local and national level as well as in the wider world. At BHASVIC you will belong to a community where you can develop your own values of democracy and freedom of speech through discussion and debate. You will have the opportunity to join college societies outside of your lessons, whilst within tutor groups you will follow carefully tailored sessions to develop your thinking and understanding of issues.

## **BREADTH**

We want to ensure that your learning stretches over a number of domains, whatever the focus of your course combinations. There is an incredible array of smaller, shorter portfolio courses from which to choose in your second year, including the Extended Project Qualification. These short courses are designed to help you specialise further and build your CV in a course or career focus of your choice. Our enrichment opportunities add breadth to your time here and you can read more about 'Getting involved' on page 28.

# Raising Aspirations



We have generations of ex-students who have gone on to future success in a range of different careers and life journeys; from parliamentary advisers, TV and radio presenters, professional dancers, international footballers, to research scientists and filmmakers. Once you have studied here, you are eligible to join our BHASVIC alumni network, which maintains active links with ex-students, many of whom who come back to the college to help out and mentor existing students in a variety of ways. For example, last year, BHASVIC alumni made up panellists on our Genderation and Women in Industry conference and supported our Careers Enrichment Day. Alumni also offered mentoring revision sessions, took part in the International Women's Day debate, participated in the Maths Challenge, spoke to Visual Arts students about their journey from A level to current employment and ran a Jamie Oliver productions project with Media Students.



## STUDENT PROFILES

# Oxford and Cambridge University Success

**BHASVIC students have received a multitude of offers from Oxford and Cambridge Universities this year, yet again demonstrating that the college is one of the largest providers to these prestigious Higher Education establishments.**

Forty-six students are in receipt of an offer this year which means a total of 103 students have been offered a place to study at Oxbridge in the last two years alone, showing that BHASVIC is a pipeline to these world-class institutions. Thirty-two students have been accepted in to Cambridge with fourteen heading to Oxford – so long as they meet the grades required.

The group of students have been drawn from 19 different schools from across the region. Between them, they have selected 28 different degrees to be studied at

29 different colleges. Natural Sciences at Cambridge stands out as the most popular degree choice with 5 students opting for this. As in previous years, a number of students from this cohort have been part of our Widening Participation programme which aims to work with students whose parents do not have HE qualifications or those who come from areas with low HE participation.

We asked some of our students what difference BHASVIC had made in their aspirations and journey towards receiving an offer.





Left to Right: Sam, Bea, Anabel, Lucy, Matt

Lucy

Lucy Wright has an offer to study Human Social and Political Science at Christ's College Cambridge. The former Chichester High School for Girls student said: ***'If I hadn't come to BHASVIC I wouldn't have even thought of applying. At enrolment I was identified and sent to talk to the Oxbridge Coordinator and at the end of my first year I moved into a specialist tutor group which massively helped me to navigate and prepare for the application process'***.

Sam

With an offer to study Veterinary Medicine at Sidney Sussex, Cambridge, Sam Butler is a former Peacehaven Community School student who has always had a love of animals and was inspired to apply by other students with similar aspirations. ***'Being in my Medics and Vets tutorial pathway meant I had both the benefit of specialist input for my course as well as specialist input from Neil (our Oxbridge coordinator) who encouraged me to make an application'***.

Bea

Beatrice Uprichard, a former Lewes Priory student has an offer to study Architecture at Queens College, Cambridge. Bea said ***'Often it is made to seem like it is far too difficult and ridiculously rare to get to places like Cambridge, coming to BHASVIC it has been normalised, made non-elitist and has become possible'***.

Anabel

Originally wanting to be a Medic, Anabel Riley a former Warden Park student has taken a different path with an offer to study Human Sciences at Mansfield College, Oxford. Her degree combines, Biology, Genetics, Psychology and Demographics amongst other areas. Anabel said that a key ingredient was ***'ex-BHASVIC students coming in to help with our applications, which was invaluable and something you wouldn't get elsewhere because of the multitude of them'***.

Matt

Matt Pereira a former Oakmeeds Community School student has an offer to study Spanish with Portuguese at Gonville & Caius, Cambridge. Matt said ***'There is an academic culture here which makes it a very acceptable environment to make such an application. I wasn't really considering University as an option at all before BHASVIC but whilst here it has become a reality'***.

# Your Study Programme

A study programme is all the formal activities that you take at the college consisting of:

- A levels, BTECs and GCSE qualifications
- Tutorial Programme: Lessons and one-off events covering careers preparation and Higher Education applications, study skills, citizenship, personal development and wellbeing
- Portfolio courses: Additional one year courses, normally taken in the second year, that extend your practical or academic studies in areas where you have an interest (for example, the Extended Project Qualification)
- Subject Extensions: Support sessions run by teachers to help you with specific areas in the courses you study
- Enrichment: Extra activities such as sport, performing arts, Duke of Edinburgh, community and charity work, clubs, societies, competitions, trips, visits and workshops... these are not compulsory but we actively encourage students to take part

The majority of students will take three A levels or equivalent (such as a combination of BTECs and A levels) at BHASVIC. This forms the core of our standard study programme, as it does nationally at this level, and is the normal requirement for entry to Higher Education. It is possible to take four A levels here, most commonly Double Maths alongside two other subjects. We will discuss whether four A levels are appropriate with applicants individually at interview. Some students may qualify to come to BHASVIC yet will also need to re-sit English or Maths GCSE which can be done alongside the main elements of a study programme. Examples of study programmes can be seen on the opposite page.

BHASVIC works closely with our partner Further Education colleges in the Brighton & Hove Colleges' Accord. Our partnership works to promote the joint planning of recruitment, curriculum and services to meet the needs of the city's local, young people. To apply to BHASVIC use the online application form: [www.bhasvic.ac.uk](http://www.bhasvic.ac.uk)

# Examples of Study Programmes

	SUBJECT 1	SUBJECT 2	SUBJECT 3	ADDITIONAL
<b>YEAR 1</b>	Business A level or BTEC	Drama A level	Media A level	Tutorial; Performing Arts Enrichment
<b>YEAR 2</b>	Business A level or BTEC	Drama A level	Media A level	Tutorial; Portfolio course; Performing Arts Enrichment

	SUBJECT 1	SUBJECT 2	SUBJECT 3	SUBJECT 4	ADDITIONAL
<b>YEAR 1</b>	Double Mathematics A level		Biology A level	Chemistry A level	Tutorial; Chemistry Olympiad
<b>YEAR 2</b>	Double Mathematics A level		Biology A level	Chemistry A level	Medicine Tutorial Pathway; Extended Project

	SUBJECT 1	SUBJECT 2	SUBJECT 3	SUBJECT 4	ADDITIONAL
<b>YEAR 1</b>	Sport BTEC Diploma		Photography A level	GCSE Maths	Football; Tutorial
<b>YEAR 2</b>	Sport BTEC Diploma		Photography A level		Football; Tutorial, Portfolio course eg. Sports Leader

Each course will start with an induction period to help you to recognise what is being asked of you, and to move you up to a new level of work and understanding.







# Vocational and Practical Programmes

We offer a range of vocational and practical courses which provide a skills-based approach to learning through practical assignments linked to real life experiences and working life. These qualifications are highly valued by employers and Higher Education institutions alike and over 200,000 16-18 year olds are working towards such qualifications nationally. Outcomes are graded as Distinction\*, Distinction, Merit and Pass and have an equivalence to A levels for those seeking entry to University. An increasing number of students nationally are successfully applying to University with a combination of A level and BTEC qualifications.

BTEC: COURSE	FIRST YEAR	SECOND YEAR
<b>Single Course</b>	Certificate Equivalent to: <b>1 AS level Max</b>	Extended Certificate Equivalent to: <b>1 A level Max</b>
	<b>UCAS Points: 28</b>	<b>UCAS Points: 56</b>
<b>Double Course</b>	Extended Certificate Equivalent to: <b>1 A level Max</b>	Diploma Equivalent to: <b>2 A levels</b>
	<b>UCAS Points: 56</b>	<b>UCAS Points: 112</b>
<b>Triple Course</b>	Extended Certificate Equivalent to: <b>1 A level Max</b>	Extended Diploma Equivalent to: <b>3 A levels</b>
	<b>UCAS Points: 56</b>	<b>UCAS Points: 168</b>

A full list of current entry requirements are available in the Admissions section of the BHASVIC website

# Dedicated support for your sixth form study

## STUDENT SERVICES

The Student Services team at BHASVIC is here to support all our students and help them achieve their goals during their time at college. We provide information, advice and guidance services in Financial Support; Travel; Welfare; Careers; Work Experience and Widening Participation.

## KEEPING YOU INFORMED

New students receive an online log-in and are able to keep track of their progress in terms of attendance, target grade and support plans through their personalised online account. Parents can also track progress online and through termly Progress Reviews. These give students a regular opportunity for self-reflection on their performance across all courses, and enable students and parents to see feedback from staff and an overview of progress. There are Parents' Evenings in the Autumn term which offer parents the chance to meet with the Personal Tutor and course teachers.

## TUTORIAL

You will be assigned a Personal Tutor at the start of your studies and they will act as a guide and mentor, keeping an eye on your progress, offering you support and help, encouraging you to take responsibility for your learning and your future. Tutor group sessions take place once a week and are located in our Student Services building which also hosts a range of specialist support. BHASVIC's tutorial programme is carefully designed to support you on your educational journey, from settling into your new environment, all the way through to life after college. Tutor sessions are used for one-to-one discussions, as well as whole group activities, and are followed up with online independent learning to support your wider development.



# Preparing for life after BHASVIC

## UNIVERSITY APPLICATIONS

The support we offer students applying to University runs from the first thoughts a student might have about studying in Higher Education right through to advice about how to budget your student loan and deal with landlords! The tutorial programme is structured to help you begin making decisions and understanding your options from early in the first year of your study at college. There is detailed support for you in researching options, preparing your application and writing a personal statement. Your Personal Tutor will check your progress in applying every step of the way and will guide you to making informed and successful choices.

Parents and carers are also supported via specialist links on our website and through Higher Education Information Evenings in the Spring term of the first year.

## SPECIALIST TUTORIAL PATHWAYS

These allow tutor groups with similar progression aims to focus on developing the skills to conquer the application process, utilising the expert guidance of the tutors involved. Students can opt for Oxbridge, Medical or Veterinary Careers, Visual Arts; and for those not wishing to pursue Higher Education, there is an Employability and Enterprise pathway focusing on preparing students for apprenticeships and the workplace, which includes a work experience placement.

## APPRENTICESHIPS, EMPLOYMENT, WORK EXPERIENCE AND CAREERS

Students who are interested in moving onto an apprenticeship or gaining direct employment when they leave college will receive excellent support. We have strong links with local training providers who work with us to help students achieve a placement. We work with local employers to give students advice on job applications, CVs and interviews, and we arrange visits to their workplaces. You can undertake a work experience placement throughout your time at BHASVIC; whether it is over the college holidays, to fit in with your timetable or during the last week of the summer term. Whatever you choose, we can help you to find a placement and once one has been found, we will work with you to ensure that you get the best from the experience.

Our careers team are located in Student Services and provide access to up-to-date information about local full-time and part-time job vacancies; local and national colleges and universities; specialist training; careers, gap years, voluntary work and working or studying abroad. Two dedicated Careers Advisers provide free information, advice and guidance on your transition from college to Higher Education or work; planning your next steps and exploring career ideas; help with CVs and filling in forms; interview techniques and money matters.



## WELFARE

The Welfare team at BHASVIC offer advice on financial support available to our students, including 16-19 bursaries. We provide extensive information on travel to BHASVIC and the various discount schemes that are available for bus and train. You can access information and support on a wide range of issues such as sexual health, anxiety and stress, alcohol, substance misuse and relationships. The college runs various events and activities

throughout the academic year linked to National Awareness Days and provides a wide range of information on a variety of welfare topics within the Student Services Centre. The college employs qualified Dialogue Counsellors. You can discuss your feelings, thoughts and any worries you may have concerning such things as college work, relationships and home life, in a confidential and informal setting.





## STUDENT PROFILE

# Hugo

**PREVIOUS SCHOOL:**

Oathall School

**STUDYING AT BHASVIC:**

Business, Economics and  
Politics A levels

I've really appreciated the quality of teaching here at BHASVIC which matches the reputation the college has for good grades. Lessons have been engaging, teachers are approachable and I've learnt to work well independently. I have found my time here rewarding with many opportunities to learn and be sociable. In the future I plan to take up a Project Management apprenticeship.

# Equality, Diversity, Inclusion



We celebrate that we are a college with a diverse group of students and staff, where acceptance and respect are part of our core values. Our community welcomes everyone as individuals who all contribute to a positive environment.

BHASVIC provides a safe place for you to re-invent yourself if that is what you want. At BHASVIC you will find a

group that you belong to, where you feel you fit-in and with whom you identify. Relationships between both staff and students are very good.

You will be respected and treated as an individual in an adult atmosphere - we will treat you fairly and without prejudice in every aspect of college life.



# Resourcing your learning

The college has a range of facilities to help you to work. Our well-equipped library provides a superb silent environment for independent study and research, with a wide range of reference works, text books, journals, newspapers and computer access to on-line journals and media. Computer printing and photocopying facilities are available and the Librarians will help you to make the best of the resources. Library staff provide advice and support with research and study skills.





### IT FACILITIES

IT facilities are spread throughout the college and BHASVIC has an impressive ratio of one device for every two students. BHASVIC wi-fi supports access via your own personal devices if you have them and choose to bring them.

All students are given an account to access the college's online learning platform, BHASVLE, which provides a 24/7 portal to all the course content students require, skilfully crafted by our subject specialists. In addition, the BHASVLE has an outstanding array of expertly selected resources for our students' personal development, including the very best the web has to offer for careers and University advice and toolkits.

Students will also be provided with a free, exciting and highly effective range of online accounts for their learning, including Office 365.

### SPECIALIST CURRICULUM FACILITIES

Many departments have the specialist facilities you would expect to find at a large college. The Science Departments have well equipped laboratories dedicated to their specific science, and excellent technical support for individual practical work. Modern Languages' students use the Language Centre's digital facilities to improve their speaking and listening skills. There are three large Art studios, two large Photographic studios and a dark room.

We are due to have a new building, planned to open in 2020, with enhanced Drama, Music, Media and Film provision along with additional specialist Science labs and student social study space. The new theatre will have over 170 seat capacity and there will be a range of state-of-the-art music rehearsal rooms alongside the main Music teaching room. Media and Film have a fully equipped editing suite, with high-spec macs and software and a Green Screen filming room. The Sports Hall and Dance studio are also well-equipped specialist facilities within the college. The Copper Building is home to excellent facilities where the Copper Cafe, Additional Learning Support and student social space can be found.

# Getting involved in wider opportunities at BHASVIC

BHASVIC offers numerous opportunities to get involved beyond your courses.

At the BHASVIC Enrichment Fair in September, you can choose from and sign up to an exciting array of options:

- Clubs and short courses which may introduce you to a new skill or be purely recreational, for example, Creative Writing, Journalism or BHASVIC TV
- Societies such as the Feminist Society (FemSoc), Debating Society, LGBTU+, charities, pressure groups, faith or party political based groups
- Sport, Music, Drama, Creative Arts
- Working with young children, listening to primary school children read
- Specialist career or study areas such as Preparation for Medicine, Visual Arts, Oxbridge, CREST Awards and International Study
- Day and residential trips in the UK and abroad
- Regular visits from high profile speakers as well as local and national MPs
- Work experience, Young Enterprise and National Citizenship Service programmes

Many of our enrichment activities are run by students for students, ensuring BHASVIC has events that students will want to get involved in, as well as the opportunity for those who run the activity to develop excellent organisational, creative and communication skills.

In addition, each department offers an exciting array of trips, visits, speakers, workshops, competitions, awards and research activities. Whatever your interests, in whichever field, there is something extra to get involved with (or even set up) at BHASVIC.

## SPORT

If you take your sport seriously you can opt to take part in a wide range of team sports including Football, Netball, Rugby and Basketball. We are proud of the success of our teams in competitions, but equally, BHASVIC helps to support individuals who represent the college in a wide variety of sports – from athletics to gymnastics. If your interest is more for fun or keep-fit purposes, we offer plenty of opportunity to participate and offer a different sporting activity every lunchtime, including yoga, table-tennis, 5-a-side football and dance sessions.



## STUDENT PROFILE

# Amber

### PREVIOUS SCHOOL:

Roedean

### STUDYING AT BHASVIC:

Psychology, PE and  
Geography A levels

Combining high-level sport with education is challenging. Being at BHASVIC has stretched me intellectually whilst the college have also been really supportive of my athletics career. My ultimate goal is the 2024 Olympic Games in Paris and since breaking the British women's 400 metres under-20 record (which had stood for 49 years) with a time of 53 seconds, this goal is now within reach. After A levels at BHASVIC, I am going to Louisiana State University on a four-year scholarship. I've chosen Louisiana because they have one of the best athletic track teams in the United States with a reputation for success!

## PERFORMING ARTS

Every year, BHASVIC stages professional quality theatrical, dance and musical productions. The Music department's Christmas concert is always a showcase of eclectic performances from talented students. Last year students involved in Drama enrichment combined their talents to stage a production of 'Education, Education, Education!' a nostalgic look back to the brit-pop era that saw a Labour government elected for the first time in decades. Audiences in this sell-out production were wowed by the considerable talent of the students involved. You don't have to take Dance, Drama or Music to be involved in productions – anyone can take part!

## CREATIVE ARTS AT BHASVIC

BHASVIC's Creative Arts Festival takes place every year in the Summer Term after the exams have finished. Celebrating the success of students who have been involved in Creative Arts courses, the Festival includes a Visual Arts Exhibition (a gallery of student work in Art, Photography, Textiles and Graphics), MPA - Sound and Vision with immersive performances across Music, Drama, Film and Dance, The Beards (celebrating the best pieces of written work by students in the English Department).

## B-FEST

'Between The Downs and Sea We Flourish' Festival is an annual celebration of student's work from all subject areas and showcases work to parents and visitors from a diverse range of both curriculum and enrichment success stories. The event provides an opportunity for students from all forms of study, including the sciences,

languages, social sciences, maths, humanities, business and computing to showcase their achievements in a fascinating and entertaining way.

## DUKE OF EDINBURGH'S AWARD SCHEME

Challenge yourself! At BHASVIC, students can work towards the Duke of Edinburgh's Gold Award. With its five sections (Volunteering, Physical, Skills, Expedition and Residential) the Award is a wonderful opportunity to develop yourself outside the classroom. It is easy to see why it is so highly valued by universities and employers. You will meet for one session a week with a group of students and a member of staff to plan your award activities and review your progress. You will practise for the Expedition through a training day in Sussex to hone your map and compass skills before completing the Practice and Qualifying Expeditions later in the year in Snowdonia and the Lake District. You will need suitable footwear and clothing for hiking, but tents and other expedition equipment can be borrowed free of charge.

## WORLD CHALLENGE EXPEDITIONS

For those seeking adventure further afield, World Challenge expeditions combine both the physical challenge of trekking with community and conservation work with some much needed time for rest, relaxation and sightseeing. These expeditions can last up to one month and allow you the opportunity to lead and play a part in the decision-making of what you do and how you budget for it. They often involve significant time away from the mod-cons of phone reception, wi-fi, electricity and running water, allowing you to experience life from a different perspective.





## STUDENT PROFILE

# Keke

### PREVIOUS SCHOOL:

Hove Park

### STUDYING AT BHASVIC:

Double Maths and  
Economics A levels

Duke of Edinburgh at BHASVIC is very organised but without adding unnecessary extra stress or taking up too much time. I've really appreciated the individual support and flexible meeting times. Before I did Duke of Edinburgh I had never been camping or put up a tent! For the volunteering aspect of the award I have been working with older members of the community which has been so rewarding. I chose to study at BHASVIC because everything I'd seen and heard about it – being here has confirmed it's a really good college with a great atmosphere and a massive variety of people to get to know.

# Duke of Edinburgh

# Additional Learning Support

Support for students with Special Educational Needs and Disability (SEND) is referred to as 'Additional Learning Support' (ALS) at BHASVIC. This support is available for any student who requires some help and guidance with their learning, not just those with a diagnosed or assessed need. We aim to work with you to make sure you have every opportunity to achieve your potential. We provide a range of support that is tailored to suit the needs of the individual student. Students can bring work related

to their studies including coursework, and address their difficulties with the help of Additional Learning Support Teachers. Support can include help with essay writing, effective note-taking and organisational skills. We also provide support for Maths and English GCSEs and preparation and practice for exams. In-class support is sometimes provided to students who have significant needs. Assistive technology can be provided to help students access learning, where assessments demonstrate need.

## EXAM ARRANGEMENTS

If you have had Access Arrangements and/or Reasonable Adjustments for Exams for your GCSEs we will assess you at the start of your time here to see if you will continue to need these arrangements during your studies at BHASVIC. Our aim is to ensure that students develop the skills and strategies they need to manage their difficulties in preparation for a productive and fulfilling life.

If you have a specific learning difficulty (e.g. dyslexia) a sensory impairment, mobility problems or anything else that affects your learning, please let us know via the Admissions Department: **01273 859810** or **[admissions@bhasvic.ac.uk](mailto:admissions@bhasvic.ac.uk)**

## English as Second or Other Language (ESOL)

We provide courses from beginners to pre-GCSE. All courses are full time and include ESOL, Maths and ICT. Students also have the opportunity to take Maths GCSE and a Level 2 ITC qualification. ESOL classes run from September to June. They can be joined during the year if there are spaces available. Our dedicated ESOL team also provide a range of enrichment opportunities within the ESOL programme of study, which includes art, playing sports and games and other activities to raise skills and self-esteem. If you would like to start in September applications need to be returned by the first Friday in December. Once we receive your application we will invite you in for a short test and interview; this will help us to make sure we put you on the right course.



## STUDENT PROFILE

# Ahmed

**FROM:**

Sudan

**STUDYING AT BHASVIC:**

ESOL

I enjoy studying at BHASVIC, I have made a lot of friends with many from different countries. Not only have I studied English, my course has also included Maths and IT along with a lot of enrichment opportunities. I like my teachers and everybody is friendly and supportive. I like all types of sport - but mainly football and going to the gym – which I enjoy during my time at college.

# The Student Union

## WHAT IS IT?

The Student Union comprises of 16 students (the Union Executive) who all have particular jobs to do, such as Secretary, President, Welfare Officer, Communications Officer, Charity Officer and Entertainment Officer. We are responsible for ensuring that your voice is heard. If you wish to contact us about anything at all you will find us at the Student Union desk in Student Services, or find us on Facebook or Twitter.

## SO WHAT DOES THE STUDENT UNION DO?

Most obvious to the majority of students are the social events we organise. Freshers' Week comes first in September followed by events such as the BHASVIC's Got Talent Christmas show, Halloween Film screening, Democracy Week, Generation Conference, Multi-Cultural Day and Leavers' Event, to name just a few.



We also speak to students on important issues - and act on them as well via the Student Council. For example, we have asked for changes to be made to the Teacher Cover policy, fed into discussions on how to improve the Learner Voice process, and represented students on a range of committees from the BHASVIC Inclusivity Group (BIG), Safeguarding Team and at Governors' meetings. We also raise a lot of money for your chosen charities throughout the year.

#### **HOW DO I GET ON TO THE UNION?**

Stand in the elections, run a poster campaign, speak at meetings, and get yourself voted on!

#### **IS THE UNION THE ONLY VOICE FOR STUDENTS?**

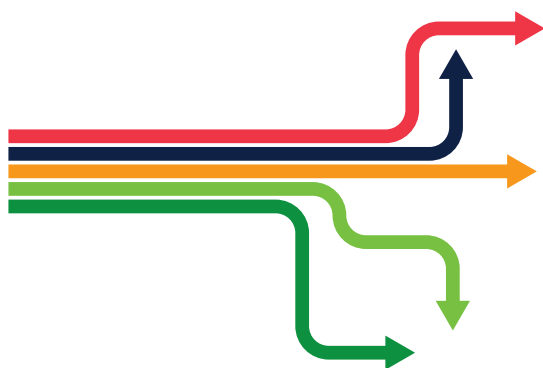
No. There is also a Cross-College Council, with representatives from each Tutor Group to take concerns direct from you to the Union Executive in a half-termly meeting. Each curriculum class also elects a representative who will meet with other students from their course and a teacher to talk about how things are going and what improvements can be made.



**BHASVIC**  
Student Union

# Life After

# BHASVIC



## Where Next?

**From your initial interview to regular meetings with your Personal Tutor, staff will carefully consider and plan how to facilitate your progression. We will encourage you to be aspirational and challenge yourself to do the very best you can in your courses and in your future career and life goals.**

All students discuss their options with their Personal Tutor as part of the weekly tutor programme and students are guided and encouraged in their use of resources, both in the careers area in Student Services and on the best websites to find out about Higher and Further Education courses, apprenticeships, employment, careers of interest and gap year projects.

Students leaving BHASVIC go on to University, employment, apprenticeships or take a gap year. At BHASVIC, we consider our students' next steps to be of primary importance. In many ways, our students' destinations after

completing their studies with us, and their achievements later on in their lives, are as important to us as the results they achieve while they are here. This is why we invest every effort in supporting our students to gain entry into their chosen destinations and to continue to achieve once there.

The impact of this investment in our students' futures comes from the Higher Education Statistics Agency ([www.HESA.ac.uk](http://www.HESA.ac.uk)). Here, statistics show how well BHASVIC students performed in comparison with other national providers of sixth-form education.

## BHASVIC Students Degree Outcomes – 2017/18

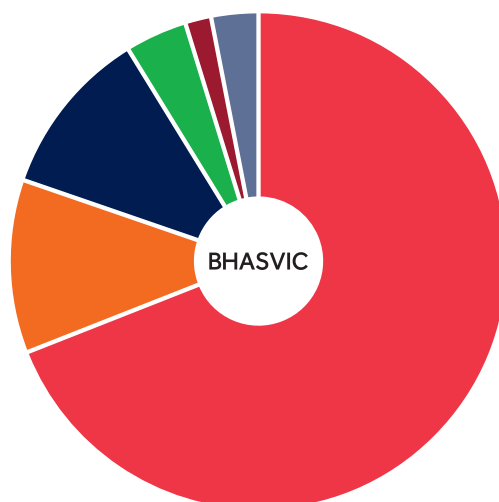
DEGREE CLASSIFICATION	1ST CLASS	1ST OR 2:1
<b>BHASVIC</b>	41%	92%
<b>INDEPENDENT PROVIDERS</b>	29%	87%
<b>SIXTH FORM COLLEGES</b>	29%	79%
<b>ALL STATE PROVIDERS</b>	28%	78%

The figures show that more than four in every five BHASVIC students who completed a degree achieved a 1st or a 2:1. This percentage is significantly higher than all other sectors, including the independent sector. We believe that BHASVIC offers something unique; preparation in giving our students the independence to achieve at the highest level. Over 54% of our students go on to study at a high tariff University compared to a national figure of 29%. According to Cambridge University admissions data, BHASVIC is the largest non-selective state education provider of students to Cambridge University. Nearly half the students who have been offered places are from families who have not traditionally gone to University.

## Student Destinations

In presenting 2017 student data we give a more accurate picture of sustained data.

Category	%
<b>Entered HE</b>	<b>69.03</b>
<b>Continued Education (not HE)</b>	<b>11.26</b>
<b>Employed</b>	<b>10.94</b>
<b>Other (inc Gap year)</b>	<b>4.03</b>
<b>Not in Education, Employment or Training</b>	<b>1.69</b>
<b>Unknown</b>	<b>3.06</b>











# ART – FINE ART: A LEVEL

## MINIMUM ENTRY REQUIREMENTS

4 in Art GCSE. To see overall entry requirements to study at BHASVIC refer to page 146.

## WHAT WILL I STUDY

Our grade one outstanding course is broad and experimental in approach and includes drawing and painting, printmaking, mixed media and 3D work. We help you to develop a personal pathway with the skills and knowledge to produce creative individual and high quality artwork. We encourage you to be inventive, independent and involved. A charge of £190 applies to contribute towards the cost of materials used during the two years of this course, bursaries and payment plans are available. You are given a generous allocation of colour printer credits per component of work and once you have used them up you top them up at your own expense.

## IS THIS COURSE RIGHT FOR ME

Are you ambitious, motivated and creative? This course is a practical making/creating course which uses a vast range of specialist materials and art techniques, it is 60% practical portfolio and 40% practical exam. Our Practical Portfolio component is supported by a 3000 word contextual/personal study essay and exam unit. The first year builds knowledge, understanding and skills through working on themes: the second year becomes more focused on you and the development of your personal ideas.

## WHERE NEXT

Creative careers are diverse and students may not have heard of some of the roles that they can progress to after taking a Fine Art A level. Careers can range from a Cartoonist to an Art Valuer; from a Museum Creator to an Advertising Art Director. There are routes into many of these professions via University, Art Foundation and through Apprenticeships. Taking a creative course can open a range of opportunities to you and the expansion of apprenticeships means that students now have a wider choice of career options available to them. Useful websites to research careers and wider progression options could include the Creative Skillset, Creative Choices, All About Careers and The Apprenticeship Guide.





# BIOLOGY: A LEVEL

## MINIMUM ENTRY REQUIREMENTS

4 in English Language, 5 in Maths and 2 6s in 2 sciences at GCSE (Combined Sciences accepted but not Applied Science). To see overall entry requirements to study at BHASVIC refer to page 146.

## WHAT WILL I STUDY

A full range of fascinating topics, from the details of cell structure to entire eco-systems. You will study animals, plants and micro-organisms; the workings of their cells, evolution and adaptations, and the application of biotechnology to benefit humans. You will discuss the challenges of maintaining bio-diversity and sustainable environmental management. It's a really good range of topics so that everyone will find areas that interest them! It is also very contextualised to relate it to how the world works around you. Students keep a lab book to evidence their skills. Please note that to support you in your success in this A level, the college may ask you to study one lesson per week of specialised mathematical support, targeted specifically at the content of this A level.

## IS THIS COURSE RIGHT FOR ME

You will enjoy this subject if you: have a real enthusiasm for Biology and want to understand the complexity of living organisms and systems; want to understand how society makes decisions about biological issues; enjoy using your practical, mathematical and problem-solving skills and want to develop your skills further. Students will succeed most if they are self-motivated independent learners. Lessons are interactive and build upon independent study. Good with Chemistry, Maths, Psychology, Sport, Environmental Science.

## WHERE NEXT

The range of courses and work opportunities involving Biology are vast and includes: veterinary science, medicine, dentistry, physiotherapy, sport science, psychology, pharmacy, bio-technology, zoology, marine biology, plant and animal science, cosmetics, healthcare, agriculture, environmental science and many more. There are also a variety of roles within sustainable resource management as the 'Green' economy continues to grow. The scientific skills developed through Biology are widely valued and transferrable to the world of work. Biology helps you to build up research, problem solving, organisation and analytical skills. Useful websites to research careers and wider progression options could include the Royal Society of Biology, All About Careers and The Apprenticeship Guide.





# BUSINESS: A LEVEL

## MINIMUM ENTRY REQUIREMENTS

4 in Maths GCSE or English Language GCSE. To see overall entry requirements to study at BHASVIC refer to page 146.

## WHAT WILL I STUDY

Business A level allows you to develop a critical understanding of business by investigating and analysing real-life business successes and business failures. You can then use this invaluable knowledge to succeed in any career! Before and throughout this course you will be encouraged to read up on businesses (brands, sports clubs, festivals, cars etc) that you are interested in. We also expect you to take an interest in current affairs so that you can begin to understand the causes and effects of consumer, business and Government behaviour. The subject will introduce you to elements of Leadership, Marketing, Accountancy, managing employees, Strategic Planning and Economic influences. You will develop your skills of independence, research and debate, and Level 3 analytical and evaluative exam skills.

## IS THIS COURSE RIGHT FOR ME

You need a genuine interest in businesses and the world outside of education. You need to be able to work individually or in groups to research and discuss a particular business situation, questioning at every opportunity. Business is a subject that requires all students to learn theory, and identify and assess them in business case studies. There is a substantial element of reading, analysing data, and communicating using written, numerical, visual and verbal methods. All students are expected to study given basic business theory before every week's lessons so that we can use this self-taught knowledge to explore real business case studies and effectively answer exam questions. Business complements all subjects because every student will be an employee at some point, whether as an engineer, an academic, an artist or an accountant, so you will benefit from being able to critique businesses and business decisions.

## WHERE NEXT

This subject can take you in many different directions such as Marketing, Finance, HR, Logistics and Retail. It provides an insight into functions that are relevant to all sectors of the economy and employment routes. Whatever your skillset, there is a role within a business to suit you, from customer facing roles to financial analysis. The skills you gain on the course will allow you to make a valuable contribution to a business in the future. Degrees and Degree Apprenticeships are available for students to progress on to after BHASVIC. Useful websites to research careers and wider progression options could include the Chartered Institute of Management, All About Careers and The Apprenticeship Guide.





# BUSINESS: BTEC LEVEL 3

## MINIMUM ENTRY REQUIREMENTS

4 in Maths GCSE or English Language GCSE. To see overall entry requirements to study at BHASVIC refer to page 146.

## WHAT WILL I STUDY

This vocational course will allow you to study topics such as business development, business strategy, accounting, financial planning, marketing and international business. You will study real business successes and failures. This course will give you the equivalent of one A level over two years of study. 3 out of 4 units will be assessed through coursework investigating at least one actual business, with one completed in exam conditions, and the 4th unit is assessed through a formal exam in the second year. You will develop your skills of communication, research, problem solving and team work. Organisation and independent learning are important so you can cope with the significant workload of completing weekly coursework activities. Analysing data and communicating using written, numerical, visual and verbal methods are all part of the course. Before and throughout the course we will encourage you to read up on businesses (brands, sports clubs, festivals, cars etc) that you are interested in. You will be expected to take an interest in current business news so that you can begin to understand the causes and effects of consumer, business and Government behaviour.

## IS THIS COURSE RIGHT FOR ME

This course is ideal for students who are passionate about business and are either planning on starting up their own business or pursuing a career in business. It is a subject that requires students to learn theories, apply them to real businesses through research, and assess their effectiveness. The course will suit you if you prefer coursework to exams and want the chance to carry out a detailed investigation of different businesses. You do need to be able to cope with constant and tight coursework deadlines so organisation skills are essential. There is a significant element of reading and writing because of the coursework, but also an expectation that you discuss and question at every opportunity. Students are expected to study given business theory before every week so that we can use this self-taught knowledge to explore real business case studies and effectively complete coursework activities.



## WHERE NEXT

This subject can take you in many different directions such as Marketing, Finance, HR, Logistics and Retail. It provides an insight into functions that are relevant to all sectors of the economy and employment routes. Whatever your skillset, there is a role within a business to suit you, from customer facing roles to financial analysis. The skills you gain on the course will allow you to make a valuable contribution to a business in the future. Degrees and Degree Apprenticeships are available for students to progress on to after BHASVIC. Useful websites to research careers and wider progression options could include the Chartered Institute of Management, All About Careers and The Apprenticeship Guide.





# CHEMISTRY: A LEVEL

## MINIMUM ENTRY REQUIREMENTS

4 in English Language, 5 in Maths and 2 6s in 2 sciences at GCSE (Combined Sciences accepted but not Applied Science). To see overall entry requirements to study at BHASVIC refer to page 146.

## WHAT WILL I STUDY

You will learn about atoms, compounds, acid-base and redox reactions. You will learn why things happen and why they sometimes don't! We consider entropy and free energy, the transition elements and organic chemistry in detail in the second year. Lessons contain practical work and problem solving. Practical work is an important aspect, and students generally do one a week (no separate coursework component); students keep a lab book to evidence their skills. Please note that to support you in your success in this A level, the college may ask you to study one lesson per week of specialised mathematical support, targeted specifically at the content of this A level.

## IS THIS COURSE RIGHT FOR ME

Chemistry is right for you if you enjoy problem solving and like to know why things happen. Chemists are interested in applying their knowledge to practical situations. You should be able to work in groups and have the ability to focus independently. Students will succeed most if they are self-motivated independent learners. Lessons are interactive and build upon independent study. There are lots of opportunities to get help and support from the department. Good numeracy and literacy skills are essential. A small percentage of the assessment will be pure recall – students are required to apply their knowledge to novel situations and be able to interpret data and draw conclusions. Good with Biology, Maths, Physics, Environmental Science.

## WHERE NEXT

Chemistry is essential for a large number of careers including medicine, pharmacy, veterinary science and dentistry. Students could also progress into careers in pharmaceuticals, food technology, manufacturing, petrochemicals, journalism and publishing, sales, forensics and teaching. Chemistry helps you to develop research, problem solving and analytical skills. It helps to you challenge ideas as well as working out solutions through logic and step-by-step reasoning. This subject also often requires teamwork and communication skills too, which are useful when working on projects. Useful websites to research careers and wider progression options could include The Royal Society of Chemistry, Chemistry World, All About Careers and The Apprenticeship Guide.





# CLASSICAL CIVILISATION: A LEVEL

## MINIMUM ENTRY REQUIREMENTS

4 in English Language GCSE. To see overall entry requirements to study at BHASVIC refer to page 146.

## WHAT WILL I STUDY

Classical Civilisation is a fascinating subject which fosters an understanding of ancient Greece and Rome. This allows for a greater understanding of our own culture and civilisation, which owes so much to Greece and Rome. Democracy, justice, empire and conflict are just some of the many concepts that will underpin your study. You will learn about some of the greatest figures in world history such as the heroic figures of Homer's epics: Odysseus, Achilles, Hector, Aeneas and Helen of Troy. You will also be introduced to some of the major political figures including Julius Caesar, Cicero, Pompey, Themistocles, Xerxes and Leonidas. Students will also learn about some of the great battles of the past such as Thermopylae, Salamis and Troy. The vibrant works of Homer, Cicero, Virgil and Herodotus are our starting point to investigate the beliefs, history, myth and society of antiquity. You will study ancient epic, history, drama and politics.

## IS THIS COURSE RIGHT FOR ME

Do you love ancient history? Do you enjoy ancient myths and legends? Do you spend a lot of your free time reading? Did you enjoy watching films set in the ancient world like 300, Pompeii, Rome or Clash of the Titans? All of these would be an advantage to students taking the subject. Students will succeed best on this course if they are self-motivated and independent learners willing to share their ideas, and participate in discussions, debates and seminars. Students need to be able to structure well-balanced arguments in essay-style questions. It presupposes no knowledge of ancient languages and will appeal to anyone interested in the ancient past. Texts are studied in English translation and you are assessed entirely by examination. It combines especially well with all humanities, language and literature courses and is supported by study visits abroad.

## WHERE NEXT

Classical Civilisation is a well-respected qualification that enables you to study a mixture of classics, history and literature. It develops a wide range of skills that are transferable to further study or the workplace such as analytical skills, communication, critical evaluation, cultural awareness and assessing and interpreting information. Students move on to a range of roles; examples might be Chartered Accountant, Civil Service employee, Heritage Manager, Market Researcher, Curator and Journalist. Apprenticeship routes are available in a variety of sectors, not only in the cultural and heritage sector. Useful websites to research careers and wider progression options could include Prospects, Museum and Heritage websites, All About Careers and The Apprenticeship Guide.





# COMPUTER SCIENCE: A LEVEL

## MINIMUM ENTRY REQUIREMENTS

6 in Maths GCSE. You do not need to have studied Computer Science or IT at GCSE/ Level 2. To see overall entry requirements to study at BHASVIC refer to page 146.

## WHAT WILL I STUDY

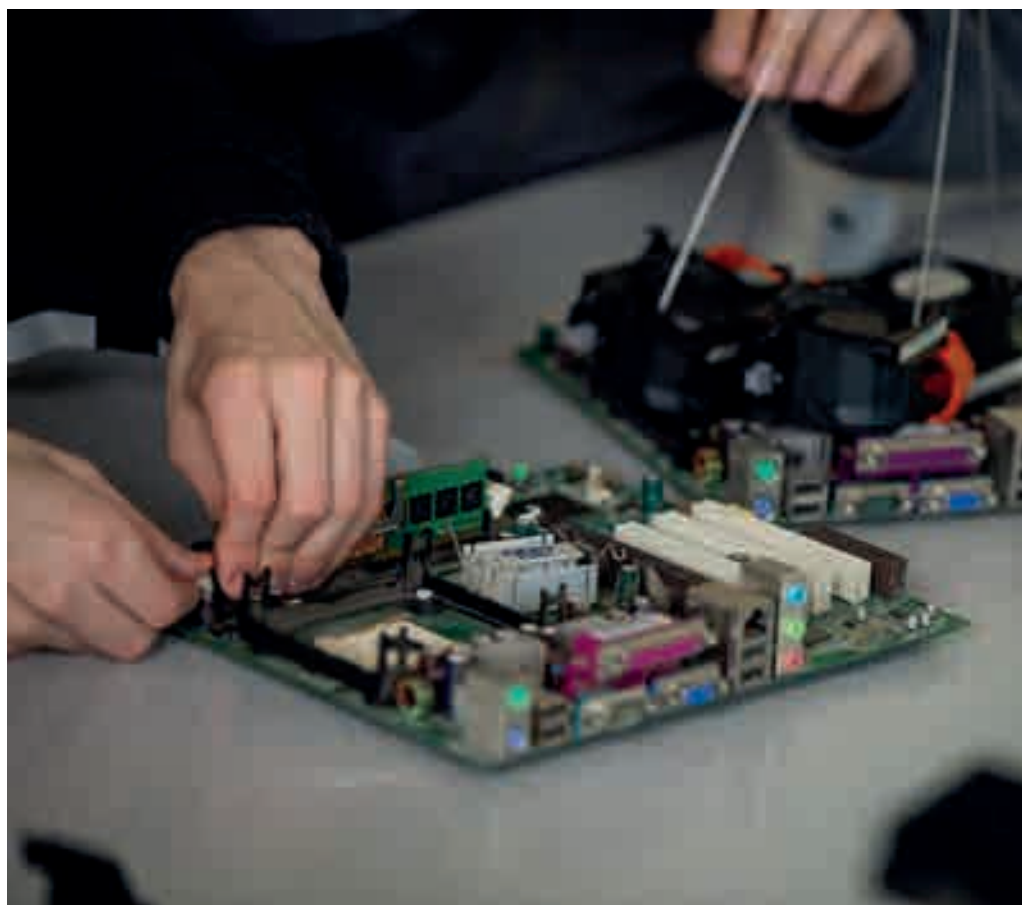
You will spend two years becoming a creative, confident programmer who is able to use a range of different languages and programming styles. You will learn how different algorithms are used to solve different types of problems, sometimes working in pairs or groups to produce larger programs. You will also cover a wide range of theory topics, learning more about: data structures, logic; Boolean algebra; binary number systems; how IDEs translate code and run it; different types of and uses for today's processors; how operating systems manage a computer; networks and how they direct traffic; web technologies and the databases behind them as well as the morals and ethics behind what computers should and shouldn't do. As part of the course you will undertake a complex project. This allows you to pursue something of personal interest. Many students choose to develop an app or game for mobile platforms / PCs, whilst some investigate machine learning models and AI, create a website with a back-end database or even use Raspberry Pi's for hardware related ideas e.g. remote-controlled home management systems.

## IS THIS COURSE RIGHT FOR ME

Even if you haven't studied Computer Science before, if you enjoy problem solving, are creative and logical and good at Maths and/or languages then this is the right course for you. Studying Computer Science will give you a great head start if you want to go on and study a technology-based subject at a higher level. Many of our students study Maths and Physics alongside, or our BTEC courses in either Computing or IT also work well with this course, as well as other science A levels. The course has a lot of mathematical content, from the decision-type maths area. If you choose not to study Maths A level it may make understanding some of the theoretical aspects tough and limit some options for Higher Education.

## WHERE NEXT

A vast array of jobs exists within the field of Computer Science including Analyst, Project Manager, Programmer and Developer roles. There are opportunities within many sectors such as biological / chemical modelling, aerospace and defence, telecommunications, financial services, healthcare, manufacturing, public and third sectors. This course enables progression into Higher Education in a wide range of degree areas such as computing, engineering and mathematics. Equally, the course supports direct entry into the computing industry e.g. apprenticeships in Digital Cyber Security. Many of our current students have taken up Degree Apprenticeships in Digital Solutions or Software Engineering (where you earn a salary and have your University fees paid for) - this is another possible progression route from this course. Useful websites to research careers and wider progression options could include The Tech Partnership, Target Careers, BCS The Chartered Institute for IT, All About Careers and The Apprenticeship Guide.





# COMPUTING (GAMES, APPS & ENCRYPTION): BTEC LEVEL 3

## MINIMUM ENTRY REQUIREMENTS

4 in English Language GCSE and 4 in Maths GCSE. To see overall entry requirements to study at BHASVIC refer to page 146.

## WHAT WILL I STUDY

You will develop your programming ability in several languages and learn how to build apps to demonstrate your skills. You will investigate security threats to data and plan and apply techniques to defend against security attacks on IT systems. You will explore how encryption protects data, learn more about how computer systems work, hardware and software, the way components of a system work together and how data in a system is used.

## IS THIS COURSE RIGHT FOR ME

This course is the equivalent of an A level. It is suitable for those with a clear interest in programming and Computing as a subject area. Although it IS NOT a requirement, ideally you will have studied Computer Science at GCSE. It matches well with: Computer Science A level, IT BTEC, Maths A level, Physics A level or related courses in science, economics or business.

## WHERE NEXT

This course provides a strong core study of computer science to enable progression into Higher Education, with a focus on areas such as cyber-security and programming. It is also a good foundation for degrees where computing-related skills and knowledge may be advantageous, such as business studies, sciences and engineering. Equally, the course supports direct entry into a range of careers in the computing industry. A degree apprenticeship is another path that a number of our current students are pursuing (where you earn a salary and have your University fees paid for).







# CREATIVE DIGITAL MEDIA PRODUCTION (FILM AND TV): BTEC LEVEL 3 (DOUBLE)

## MINIMUM ENTRY REQUIREMENTS

There is no requirement to have a 4 in GCSE English for this course. However, students are required to have a level of camera and editing experience that will be assessed at interview, by submitting a portfolio of two artefacts, for example either web address for online artefacts, DVD, or memory stick. To see overall entry requirements to study at BHASVIC refer to page 146.

## WHAT WILL I STUDY

This largely practical course focuses on developing the technical skills required for working in film and television production. The units covered allow you to develop a professional understanding of the industry and the skills required to work within it. You will work in partnership with real media companies, pitching and producing work that responds to real briefs. You will work in production crews to script, storyboard, produce, edit, and present film and television products. Productions will include stop-motion, music videos, narrative film making and advertising and marketing. There are two external set practical examinations which are completed in timed conditions.

## WHERE NEXT

This qualification is the equivalent of two A levels and carries UCAS points. This course will prepare you for working in the creative industries, or for entry onto a practical course at University. At the end of the course, you will have a portfolio of work to take to University or job interviews.

## IS THIS COURSE RIGHT FOR ME

If you currently enjoy making your own media and film products, and are keen to develop industry-standard technical skills, this is the right course for you. This course is ideal for you if you already showcase your work on a website or YouTube channel, or if you'd like to do so in the future. Throughout the course, you'll be able to create a portfolio of work that you can show to future employers and universities. This course requires a real time commitment from students. You will produce at least four practical pieces, which require group work outside of lessons, as you will be storyboarding, shooting and editing footage. This largely takes place at weekends, so students need to be really committed to pursuing a media career. It goes well with Media Studies, Film Studies, Graphic Design; IT or Computer Science would be beneficial.





# CREATIVE DIGITAL MEDIA PRODUCTION (FILM AND TV): BTEC LEVEL 3 (SINGLE)

## MINIMUM ENTRY REQUIREMENTS

4 in English Language GCSE. Students do not need to have any prior camera or editing experience for this course, but should have a willingness to learn. To see overall entry requirements to study at BHASVIC refer to page 146.

## WHAT WILL I STUDY

This practical course focuses on developing your pre-production, production and post-production skills that are required for working in the film and television industry. Over the course you will be given the opportunity to explore a range of practical productions including: music video, stop motion animation, film making and TV productions. Alongside this you will develop knowledge and understanding of pre-production techniques and research skills. You will work in production crews to set internal assignment briefs and develop a production from its initial treatment and pitch to its final individual export.

## IS THIS COURSE RIGHT FOR ME

Creative Media Production is an exciting and challenging course which encourages you to critically engage with and evaluate a broad range of moving image products. The course is designed to provide an educational foundation for a range of careers in the media industry and allied sectors. The practical aspect of the course requires a commitment from students to work outside of their lessons and will allow students the opportunity to develop their skills in camera, editing and project management.

## WHERE NEXT

This qualification is the equivalent of one A level. This course will prepare students for working in the creative industries as well as preparing students for entry onto a practical degree at University. At the end of the course, you will have a portfolio of work to take to University or job interviews. Possible future careers might include Journalist, Media Planner, Social Media Manager, Technician, Researcher, Digital Marketer and Advertising Officer. Useful websites to research careers and wider progression options could include Creative Skillset, Hive, All About Careers and The Apprenticeship Guide.





# CRIMINOLOGY: WJEC LEVEL 3

## MINIMUM ENTRY REQUIREMENTS

No specific course entry requirement. To see overall entry requirements to study at BHASVIC refer to page 146.

## WHAT WILL I STUDY

There are 4 areas to study:

**Unit 1 (year 1) Changing awareness of crime:** At the end of this unit, you will have developed skills to differentiate between myth and reality when it comes to crime and to recognise that common representations may be misleading and inaccurate; the importance of changing public perceptions of crime; the skills to plan a campaign for change in relation to crime, for example to raise awareness, change attitudes or change reporting behaviour.

**Unit 2 (year 1) Criminological theories:** At the end of this unit you will have developed the skills to evaluate some criminological theories (why do people commit crimes?) and know there are debates within the different theories. You will understand how changes in criminological theory have influenced policy. You will have gained the skills to apply theories to a specific crime or criminal in order to understand both the behaviour and the theory.

**Unit 3 (year 2) Crime Scene to Court Room:** At the end of this unit you will have developed the skills to analyse evidence, review criminal cases and evaluate the evidence in the cases to determine whether the verdict is safe and just.

**Unit 4 (year 2) Crime and Punishment:** At the end of this unit, you will consider such questions as "Why do most of us tend to obey the law even when to do so is against our own interests?", "What social institutions have we developed to ensure that people do obey laws?", "What happens to those who violate our legal system?", "Why and how do we punish people?", "What organisations do we have in our society to control criminality or those who will not abide by the social rules that most of us follow?", "We spend a great deal of taxpayers' money on social control, so how effective are these organisations in dealing with criminality?"

## IS THIS COURSE RIGHT FOR ME

50% of the assessment requires two 8 hour internal assessments spread over two days each (Unit 1 and Unit 3). You will need to develop good IT, English and research skills for these. There are also two external exams (90 minutes). Each component must be passed to receive a grade.

## WHERE NEXT

UCAS points: An A\* grade would receive 56 UCAS points. The main purpose of the WJEC Level 3 Applied Diploma in Criminology is to use the qualification to support access to Higher Education degree courses, and would be especially useful if applying for BSc Criminology, BA Criminology, BA Criminology and Criminal Justice, BSc (Hons) Criminology and Psychology, LLB (Hons) Law with Criminology, BA (Hons) Criminology and Sociology, BA (Hons) Criminology, BSc (Hons) Psychology and Sociology, BSc Criminology with Law. Alternatively, the qualification allows learners to gain the required understanding and skills to be able to consider employment within some aspects of the criminal justice system, e.g. the National Probation Service, the Courts and Tribunals Service or the National Offender Management Service.





# DANCE: A LEVEL

## MINIMUM ENTRY REQUIREMENTS

4 in Dance GCSE if taken or Grade 5 ballet. An audition is required if neither is held. To see overall entry requirements to study at BHASVIC refer to page 146.

## WHAT WILL I STUDY

This exciting course will help to develop you as a dancer, performer, choreographer and critic. You will be taught professional repertoire from some of the leading professional dance companies in the UK and abroad and you will be given the tools to create your own choreography. Through studying the work of others you will also develop skills of analysis. Assessment is 50% practical (performance in a solo and a quartet / group choreography) and 50% written. In addition to your core hours you will receive weekly dance technique classes. There is a £100 charge for attending performances and participating in workshops throughout the two years of this course. Bursaries and payment plans are available.

## IS THIS COURSE RIGHT FOR ME

Dance at BHASVIC achieves outstanding results and we believe this is because we offer a supportive and creative learning environment fostering individual talent in dance. If you enjoy watching and analysing dance, are happy to perform and are willing to try out new ideas then we think you will really enjoy the course.

## WHERE NEXT

Our students have had great success after studying with us, attending dance conservatoires such as The Royal Conservatoire of Antwerp, Rambert School of Ballet and Contemporary Dance, London Contemporary Dance School, Trinity Laban and Northern School of Contemporary Dance. Many students have also gained places at London Studio Centre, Bird, Laines and Urdang. Possible related careers could include Professional Dancer, Choreographer, Dance Teacher/Instructor, Community Dance Practitioner, Dance Movement Specialist, Dance Company Manager or an Education Officer for Dance Companies. Useful websites to research careers and wider progression options could include One Dance, All About Careers and The Apprenticeship Guide.







# DRAMA AND THEATRE: A LEVEL

## MINIMUM ENTRY REQUIREMENTS

5 in English Literature GCSE. To see overall entry requirements to study at BHASVIC refer to page 146.

## WHAT WILL I STUDY

The new linear A level course requires students to take a practical and academic exploration of Theatre. Students are expected to take part in practical projects and apply practitioner ideas as well as produce creative logs and write academically reasoned essays on current theatre practice. There are three components to the course. In Components One and Two you will rehearse and explore text and perform pieces, both script based and devised, to an external examiner and audience. These pieces are supported by written work which outlines your processes of investigation. For Component Three you will undertake a written exam which will focus on three different plays which you will have studied over the two years of the course, looking at staging the plays from the point of view of a director and actor and designer. There is a £150 charge for attending performances throughout the two years of this course. Bursaries and payment plans are available.

## IS THIS COURSE RIGHT FOR ME

If you enjoy watching theatre, are happy to perform and are willing to try out ideas in a workshop environment then you will enjoy the course. The ability to work as part of a team is essential. There are many opportunities to practically apply your skills as a performer. More challenging areas would include essay writing and the application of theory to practice. Assessment is 40% practical and 60% written. This subject would suit students who are interested in studying any humanities subjects such as English Literature and Language as well as History and Classics. Additionally it sits well alongside social sciences such as Psychology and Sociology.

## WHERE NEXT

The study of Drama and Theatre Studies at A level can help students with a variety of skills as well as develop their creative career aspirations. Students who study this course will enhance their skills in creative thinking, teamwork, analysis, presentation skills, planning etc. The course supports students wishing to improve their communication skills in both verbal and written forms. Students can progress from this course on to a number of career areas either by further study or by direct entry to the job market. The skills you gain while studying a performing arts degree are valued by all types of employers, for example confidence, self-presentation, teamwork and collaboration, ability to experiment with different ideas and learning from feedback. Examples of related roles that students may pursue could include Actor, Stage Manager, Arts Administrator, Dramatherapist and Television Production Assistant. Useful websites to research careers and wider progression options could include Creative Skill Set, All About Careers and The Apprenticeship Guide and Equity (career factsheets).





# ECONOMICS: A LEVEL

## MINIMUM ENTRY REQUIREMENTS

4 in Maths GCSE and 4 in English Language GCSE. To see overall entry requirements to study at BHASVIC refer to page 146.

## WHAT WILL I STUDY

Economics is the study of people's behaviour in deciding how we achieve 'well-being' for a society. At the heart of Economics is the question of choice. The methodology of Economics is applied by everyone when deciding how to spend their incomes. A level Economics is divided into two parts: Microeconomics and Macroeconomics. Microeconomics explores the concept of free markets and whether individuals and firms acting in their own self-interest achieve the most effective production and consumption decisions. Microeconomics focuses on different markets, such as energy, banks and supermarkets, critically assessing whether they work effectively for consumers. Macroeconomics takes a holistic view and looks at economics at a national and international level, exploring themes such as inequality, unemployment, inflation, economic growth, international trade and economic development. Macroeconomics evaluates how government policies can influence wealth creation and equality.

## IS THIS COURSE RIGHT FOR ME

Successful A level Economists have an enquiring mind and are fascinated by the world around them. You should be interested in the effect of leaving the EU on the prosperity of the UK, how decisions such as taxing sugary drinks affect the choices consumers make and how to solve gender inequality. Be prepared for disagreement, economists have wildly different opinions about policy choices and likely outcomes. You should be prepared to learn some theoretical and technical concepts which can at first seem difficult. These techniques will enable you to critically assess a range of issues such as how best to combat global warming, how to reduce poverty and how to 'nudge' people to eat more healthily. You should be prepared to study independently as there is much to cover, so you must read and learn between lessons. You should enjoy explaining issues with extended essay writing and enjoy and understand the logic of maths. Although in A level Economics the maths is GCSE level, maths is a prerequisite for most Economics degrees. Due to its breadth of relevance, economics complements any subject, but it does work particularly well with Politics, Geography, History, Maths, Sociology and Psychology.



## WHERE NEXT

Economics students in the past have gone straight into jobs in the banking and finance sector but an A level in Economics can also lead to a range of occupations in the business sector, from HR to Marketing, where students need an understanding of the economy. Skills that can be obtained from studying Economics include, problem solving abilities, innovation, analytical skills, confidence with numbers, and economic awareness. Students can also go on to University to study Economics and related degrees. Careers that may follow from this include Actuarial Analyst, Chartered Accountant, Data Analyst, Economist, Financial Risk Analyst, Stockbroker, Journalist etc. Jobs where an economics qualification would be useful include Actuary, Civil Service Fast Streamer, Data Scientist, Politician, Researcher, Local Government Officer and Quantity Surveyor. Useful websites to research careers and wider progression options could include Royal Economic Society, Target Jobs, All About Careers and The Apprenticeship Guide.





# ENGLISH: GCSE

## **MINIMUM ENTRY REQUIREMENTS**

3 or below in English GCSE. To see overall entry requirements to study at BHASVIC refer to page 146.

## **WHAT WILL I STUDY**

A range of fiction and non-fiction texts that require well written analytical responses to show a confident technical understanding of how writers use words and sentences to create their meanings. Students will also develop their own skills and ideas in writing and speaking.

## **IS THIS COURSE RIGHT FOR ME**

This is explicitly for students who didn't get a grade 4 or above in GCSE and therefore need to retake to get a 4 or above.

## **WHERE NEXT**

This enables students to take or complete a range of Level 3 courses that require grade 4 English GCSE.



## STUDENT PROFILE

# Jenny

### **PREVIOUS SCHOOL:**

Brighton & Hove High School

### **STUDYING AT BHASVIC:**

English Literature, French and Classical Civilisation A levels

I chose to come to BHASVIC because of its great reputation. The teachers here have provided me with immense confidence and support. I am hoping to go on to study English as a degree and have found University tutorial sessions very helpful in making my future decisions. It's amazing how quickly we have to start planning our future so soon after arriving here, but all options are carefully presented to us.



# ENGLISH LANGUAGE: A LEVEL

## MINIMUM ENTRY REQUIREMENTS

4 in English Language GCSE. To see overall entry requirements to study at BHASVIC refer to page 146.

## WHAT WILL I STUDY

A wide range of everyday spoken and written texts along with the linguistic and grammatical concepts we need to analyse and explore how people are using their language to present their thoughts, feelings, values and identities in any situation. You may discover, as George Bernard Shaw writes, that "the majesty and grandeur of the English language [is] the greatest possession we have."

## IS THIS COURSE RIGHT FOR ME

If you find yourself listening in to conversations on the bus, analysing the headings to advertising posters or wondering at the words used in social media exchanges, you are a budding English Language expert and should do this course.

## WHERE NEXT

A good grasp of the English language, literacy and communication is essential in many careers. This subject will help to develop your critical and interpersonal skills. Every business, whether in the publishing industry, marketing or financial sectors, needs staff to present products and services in a professional and attractive manner. If you enjoy writing, you may find that you already have a number of the skills that employers are looking for. More and more businesses are increasing their online presence, and need articulate individuals to promote their products and services to a global audience. Roles can include apprenticeships in legal services, journalism, recruitment, digital marketing and social media amongst others. For students who wish to continue their studies to degree level there are a large number of options available, these include Digital Copywriter, Editorial Assistant, English as a Foreign Language Teacher, Web Content Manager. Possible future careers where English Language would be useful include: Academic Librarian, Advertising Account Executive, Arts Administrator, Information Officer, Primary School Teacher, Public Relations Officer etc. Useful websites to research careers and wider progression options could include NCTJ, All About Careers and The Apprenticeship Guide.







# ENGLISH LANGUAGE & LITERATURE: A LEVEL

## MINIMUM ENTRY REQUIREMENTS

4 in English Language GCSE. To see overall entry requirements to study at BHASVIC refer to page 146.

## WHAT WILL I STUDY

You will explore a wide range of texts including novels, stories and plays, as well as non-literary writing like magazine articles, webpages, autobiography, memoirs and personal writing such as letters, diaries, emails and texts or transcripts of conversations. Studying these texts will help you to think about how people use language to present their ideas and identities. You will be required to submit a piece of fictional creative writing and a piece of journalism for coursework.

## IS THIS COURSE RIGHT FOR ME

If you: have enjoyed both your English GCSEs and particularly the creative elements of your English work; write your own stories, poems, articles, reviews in your own time; see yourself as a writer in the future and enjoy studying how other writers use language, you should do this course.

## WHERE NEXT

A good grasp of the English language, literacy and communication is essential in many careers. This subject will help to develop your critical and interpersonal skills. Every business, whether in the publishing industry, marketing or financial sectors, needs staff to present products and services in a professional and attractive manner. If you enjoy writing, you may find that you already have a number of the skills that employers are looking for. More and more businesses are increasing their online presence, and need articulate individuals to promote their products and services to a global audience. Roles can include apprenticeships in legal services, journalism, recruitment, digital marketing and social media amongst others. For students who wish to continue their studies to degree level there are a large number of options available, these include Digital Copywriter, Editorial Assistant, English as a Foreign Language Teacher, Web Content Manager. Possible future careers where English Language and Literature would be useful include: Academic Librarian, Advertising Account Executive, Arts Administrator, Information Officer, Primary School Teacher, Public Relations Officer etc. Useful websites to research careers and wider progression options could include NCTJ, All About Careers and The Apprenticeship Guide.





# ENGLISH LITERATURE: A LEVEL

## MINIMUM ENTRY REQUIREMENTS

4 in English Language GCSE. To see overall entry requirements to study at BHASVIC refer to page 146.

## WHAT WILL I STUDY

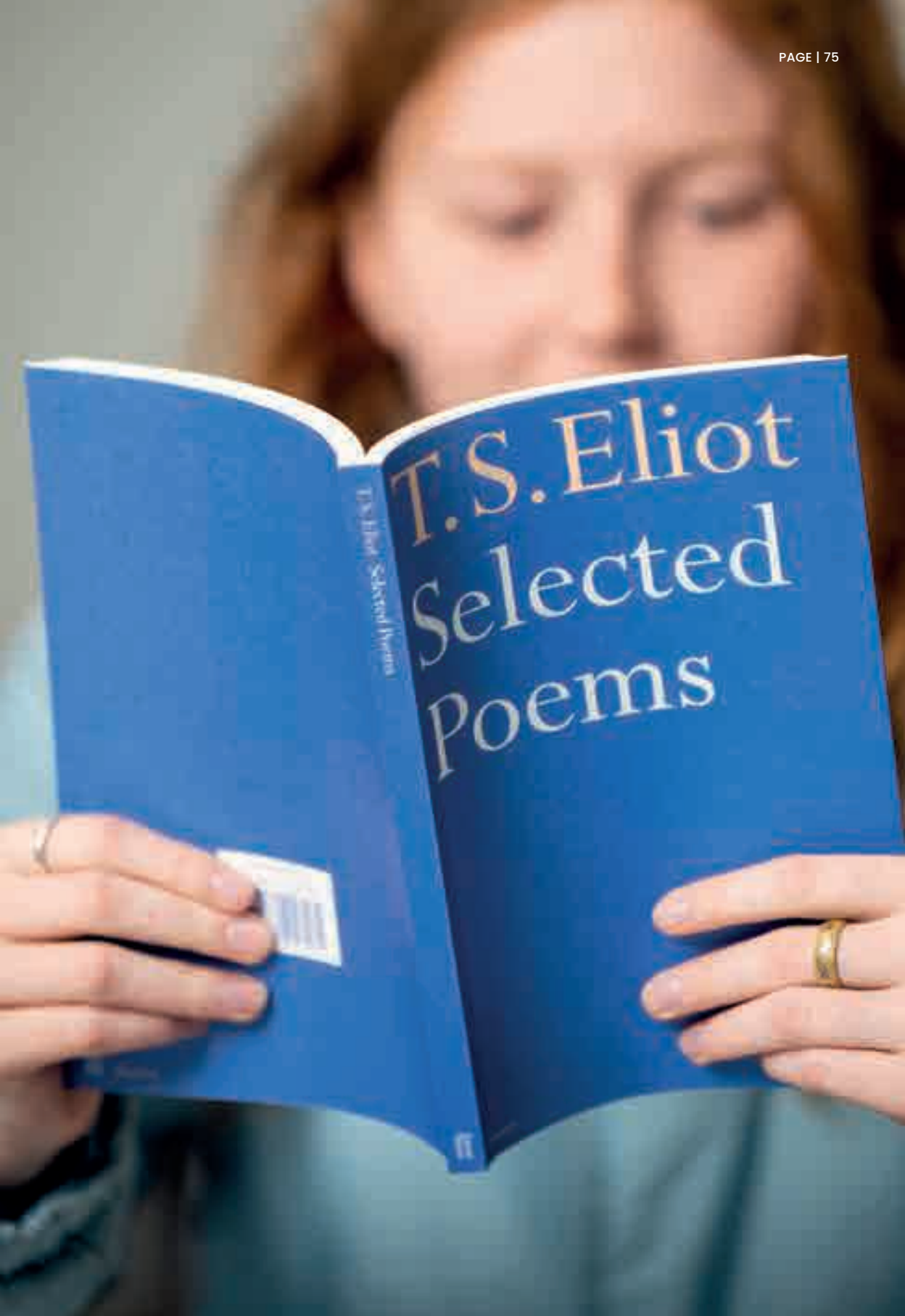
You will explore a range of exciting and challenging literary texts, including novels, poetry and plays from across the last 500 years as well as 21st century texts, all of which have stood the test of time and proved themselves to be great writing. You will study literature that has "never finished saying what it has to say." You'll be encouraged to read widely, independently and in-depth.

## IS THIS COURSE RIGHT FOR ME

Those who love reading literary texts, discussing and writing about what they might mean and thinking deeply about how texts are written and interpreted should do this course.

## WHERE NEXT

A good grasp of the English language, literacy and communication is essential in many careers. This subject will help to develop your critical and interpersonal skills. Every business, whether in the publishing industry, marketing or financial sectors, needs staff to present products and services in a professional and attractive manner. If you enjoy writing, you may find that you already have a number of the skills that employers are looking for. More and more businesses are increasing their online presence, and need articulate individuals to promote their products and services to a global audience. Roles can include apprenticeships in legal services, journalism, recruitment, digital marketing and social media amongst others. For students who wish to continue their studies to degree level there are a large number of options available, these include Digital Copywriter, Editorial Assistant, English as a Foreign Language Teacher, Web Content Manager. Possible future careers where English Literature would be useful include: Academic Librarian, Advertising Account Executive, Arts Administrator, Information Officer, Primary School Teacher, Public Relations Officer etc. Useful websites to research careers and wider progression options could include NCTJ, All About Careers and The Apprenticeship Guide.



T.S. Eliot  
Selected  
Poems

T.S. Eliot Selected Poems





# ENVIRONMENTAL SCIENCE: A LEVEL

## MINIMUM ENTRY REQUIREMENTS

4 in English Language GCSE and 4 in two Science GCSEs (Combined Sciences accepted but not Applied Science). To see overall entry requirements to study at BHASVIC refer to page 146.

## WHAT WILL I STUDY

You will explore the key challenges facing our planet and how the environment supports us, how we threaten these support systems and strategies for a more sustainable lifestyle. Studying wildlife conservation, resource management, energy use, pollution and food production you will develop in-depth understanding of the problems and the solutions. The specification covers many aspects of the world around us, including conservation methods, land use conflict, global climate change, pollution, energy resources, sustainable biological resources, evolution, biotechnology and ecosystems and population dynamics – it's a really good range of topics so that everyone will find areas that interest them! It is also very contextualised to relate it to how the world works around you and includes practical work.

## IS THIS COURSE RIGHT FOR ME

This subject is for you if you have a real interest in the environment and its sustainable management; enjoy science and want to apply your understanding in real-world contexts; want to develop your skills in researching and evaluating information and analysing data; like debate and problem solving. You are most likely to succeed if you are a self-motivated independent learner. Lessons are interactive and build upon independent study. You should be willing to participate in topical discussions and debates, be able to structure well-balanced arguments in essay-style questions and use data from different sources to analyse results. Good with Biology, Chemistry, English, Geography, Maths, Psychology, Politics.

## WHERE NEXT

Your interest in the environment and ethical issues could lead you into a diverse world of career paths. If you are interested in sustainability, world resources or conservation then this could be the course that takes you towards a rewarding career. Possible related sectors include ecology and wildlife conservation, environmental science, agriculture, geography, geology or climatology. Students wishing to study this subject at degree level may also consider: Zoology, Marine Biology, Biotechnology, Animal Science, Sustainable Civil Engineering, Journalism, Urban Landscape Design etc. Environmental experts are needed in business, industry and government as well as estate management, land reclamation, countryside management and conservation. Useful websites to research careers and wider progression options could include The Chartered Institute of Ecology and Environmental Management (CIEEM), Institute of Environmental Management (IEMA), All About Careers and The Apprenticeship Guide.





# EXTENDED PROJECT QUALIFICATION

## MINIMUM ENTRY REQUIREMENTS

4 in English Language GCSE. Students studying the EPQ in their First Year will be selected on the strength of their GCSE qualifications. To see overall entry requirements to study at BHASVIC refer to page 146.

## WHAT WILL I STUDY

The Extended Project Qualification is a one-year course which is quite different to an A level. It is a project based piece of work that allows you to research and write or create in an area that you are interested in. There is immense flexibility in the route you decide to take and we encourage you to create projects themed around your future plans, passions and main interests. To give you a taste of the diversity of EPQ topics, the following areas of research have all been submitted for projects: "Should we surrender our DNA at birth?"; "How music production can change a sample of music."; "The influence of Scandinavian folk-wear on the British fashion industry"; "The morality of horse racing"; "Restricting advertising to children"; "The necessity of feminism"; "Do numbers really exist?". By the end of the project you will have produced an extended dissertation of around 6000 words or an 'artefact' - a piece that could be a model, design, piece of art, music etc. which is accompanied by a shorter essay. Your teacher acts as a mentor, developing your skills in analysis, evaluation and research. An important aspect of the final assessment is a presentation on your findings and your reflections on the overall experience.

## IS THIS COURSE RIGHT FOR ME

The EPQ is excellent preparation for University as it mirrors the style of research and assessment you will encounter in Higher Education. For those not planning on University, it showcases deep knowledge of a topic of your choice which can feed into any future career choices. It is simply a brilliant opportunity to pursue your interests in any topic of your choice. The EPQ can be studied in either your first or second year but there are restrictions on numbers in the first year and, in the case of over-subscription, students will be selected on the strength of their GCSE qualifications.



## WHERE NEXT

Studying the EPQ opens the door to many opportunities. It shows that you can plan a project and develop a good question; it shows good time management and your ability to reflect on progress; researching and analysing texts; academic referencing and critical thinking; writing and structuring a dissertation according to academic conventions; evaluating your own learning and achievements and giving an oral presentation to a non-specialist audience. These skills are highly prized by universities and are essential in many areas of employment such as Journalism, Law, Civil Service, Research, Archivist, Public Speaking, Teaching, Sales and IT.





# FILM STUDIES: A LEVEL

## MINIMUM ENTRY REQUIREMENTS

4 in English Language GCSE and 4 in English Literature GCSE. To see overall entry requirements to study at BHASVIC refer to page 146.

## WHAT WILL I STUDY

Film Studies is designed to explore and creatively engage with all aspects of filmmaking. It involves analysis of a wide range of texts, including British, American and European cinema, silent film, documentary and experimental film. You will analyse both the technical and creative choices made by film makers to produce meaning, as well as develop an understanding of how a film's production context affects the meanings it generates. Individually, you will also create a short film or a screen play (20% of the final grade). You will study twelve films and write analytical essays on them, focusing on spectatorship, aesthetics and film theory. You will be assessed on these in two written examinations.

## IS THIS COURSE RIGHT FOR ME

The subject contains a mixture of written analysis and practical work. The main focus is on critical analysis of film texts. You will develop an understanding of how the technical and creative aspects of film-making create meaning for audiences. You should enjoy watching a wide range of films (including World Cinema), like sharing opinions on these with others, and be able to analyse and write critically about films. Best suited to people who are strong writers. Film Studies goes well with any theory-based, essay subject such as Media Studies, English Literature, History, Classics, Politics, Sociology etc. as well as Digital Creative Media, IT or Computer Science if you enjoy the practical work.

## WHERE NEXT

There are far more job roles on offer in the Creative Industries than you might think. This course prepares you for the broad and amazing range of roles available in this sector but will also help you develop your critical and analytical skills. There is a practical element to the course, which makes it suitable for those who want to work in the film industry. However, the course is largely a written, theoretical course, so is suitable if you are aiming to take an academic subject, such as History, Politics, English Literature or Philosophy at University.





# FRENCH: A LEVEL

## MINIMUM ENTRY REQUIREMENTS

4 in English Language GCSE and 6 in French GCSE. To see overall entry requirements to study at BHASVIC refer to page 146.

## WHAT WILL I STUDY

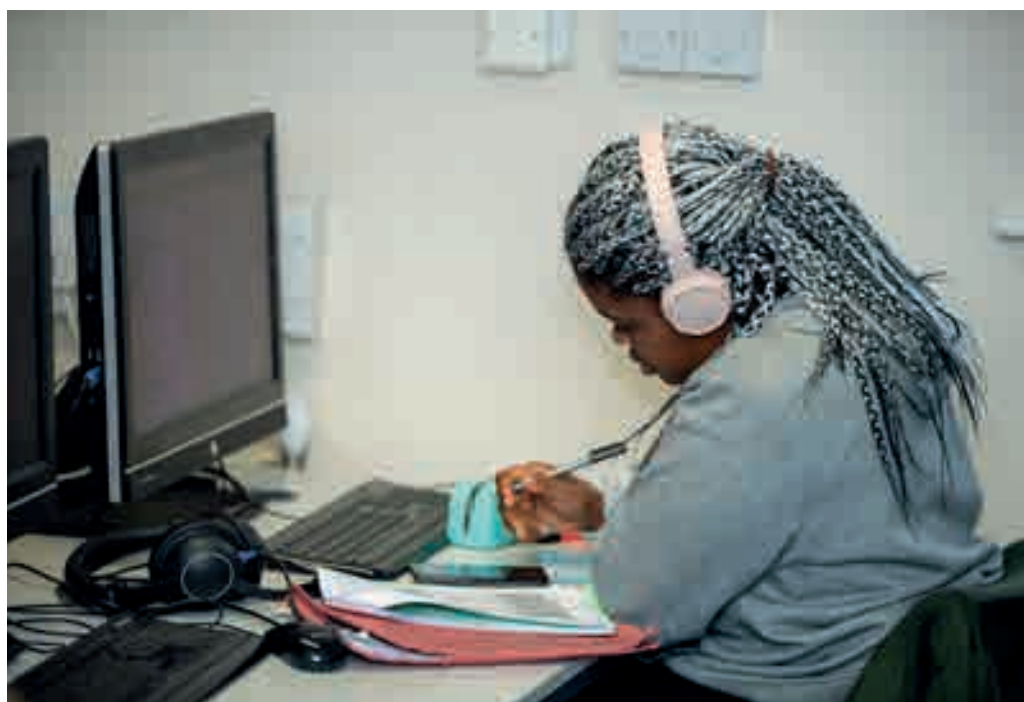
You will learn to communicate fluently in the language both orally and in writing. You will read and listen to authentic material in order to develop your comprehension skills and to widen your knowledge of the culture. You will study topics, literary texts and films relevant to the country/countries where the language is spoken.

## IS THIS COURSE RIGHT FOR ME

Did you enjoy the language at GCSE? Do you want to become fluent and develop your linguistic and cultural knowledge? Good linguists are risk takers and naturally inquisitive. At this level you need to be rigorous in your learning and very accurate in your application of knowledge. This course will develop your language skills while giving you an insight into cultural and political issues in the Francophone World.

## WHERE NEXT

Language learning is inextricably bound up with History, Culture, Business and Economics. There are well attested advantages of speaking more than one language. Linguists are increasingly in demand in many sectors of industry. You may consider a degree purely in Languages / Linguistics / European Studies, leading to a wide variety of careers including, but not limited to, Translation, Interpreting, Teaching, Publishing, Journalism and Marketing. A language can also be combined with most subjects at Higher Education level, for example Law, International Relations, Politics, Media, Business or Sciences. Awareness of a foreign language is also an asset when applying for apprenticeships. Jobs where this is particularly useful are Cabin Crew, Travel Services, Customer Service and Relations, Events Assistants and Public Services. Useful websites to research careers and wider progression options could include Planit plus, All About Careers and The Apprenticeship Guide.





# GEOGRAPHY: A LEVEL

## MINIMUM ENTRY REQUIREMENTS

4 in English Language GCSE and 4 in a science GCSE. 4 in Geography GCSE, if taken. To see overall entry requirements to study at BHASVIC refer to page 146.

## WHAT WILL I STUDY

"Geography is the study of Earth's landscapes, peoples, places and environments. It is, quite simply, about the world in which we live. Geography is unique in bridging the social sciences (human geography) with the natural sciences (physical geography)" [Royal Geographical Society]. Geography investigates current issues through the study of natural and human environments from a local to global scale. Topics covered in the first year include Coastal Landscapes, Globalisation, Tectonic Processes and Hazards, Diverse Places and the Water Cycle and Water Insecurity. In the second year we will study Superpowers, Climate Change, The Carbon Cycle, Identity and Sovereignty and Migration. Students also complete an independent piece of coursework in the second year. You will also be expected to learn and use case studies. These are in-depth examples that focus on a located and defined area or event. They should be used to supply the evidence necessary for essays and other long answers on a topic. While you will be provided with a selection of case studies, you will also be encouraged to develop your own. There is a £50 charge to contribute towards field trip costs during the two years of this course. Bursaries and payment plans are available.

## IS THIS COURSE RIGHT FOR ME

Geography suits a wide range of students. It develops skills such as extended writing, numerical and data analysis, IT research, mapping, fieldwork and coursework skills. It combines well with other subjects from the arts or sciences. You will be offered opportunities to visit a variety of sites and locations, some of which are compulsory and others which are recommended but optional. This will include fieldwork in the local area, and opportunities to visit other significant local sites, as well as the option of a foreign trip (Croatia and France have been previous destinations). We organise lectures by University academics and professionals. A successful Geography student would: take an interest in the world around you, do extra "reading around the subject" not just doing work which you have been set, arrive fully prepared for lessons, learn and use appropriate terminology, be prepared to have a go at more advanced activities and both ask and answer questions in class. The course is 20% coursework, and 80% external exam. This subject goes well with Humanities subjects such as History, Classical Civilisation and English Literature or Language. Additionally it complements science.

## WHERE NEXT

The wide range of skills developed by studying Geography means that students are highly valued by employers, and Geographers are usually near the top of graduate employment tables. Geography degrees lead to a BSc or a BA degree depending on the balance of Physical or Human Geography involved (BA is normally more Human Geography). Some related degree areas could include Anthropology, International Development, International Relations and Earth Sciences. Job roles in this sector can be found in Teaching, Environment, Energy and Sustainability, Geographical Information Systems, Planning and Development Surveying. Jobs where this subject may also be useful include Logistics and Distribution Manager, Market Researcher, Sustainability Consultant and Tourism Officer. Useful websites to research careers and wider progression options could include Royal Geographical Society, All About Careers and The Apprenticeship Guide.





# GERMAN: A LEVEL

## MINIMUM ENTRY REQUIREMENTS

4 in English Language GCSE and 6 in German GCSE. To see overall entry requirements to study at BHASVIC refer to page 146.

## WHAT WILL I STUDY

You will learn to communicate fluently in the language both orally and in writing. You will read and listen to authentic material in order to develop your comprehension skills and to widen your knowledge of the culture. You will study topics, literary texts and films relevant to the country/countries where the language is spoken.

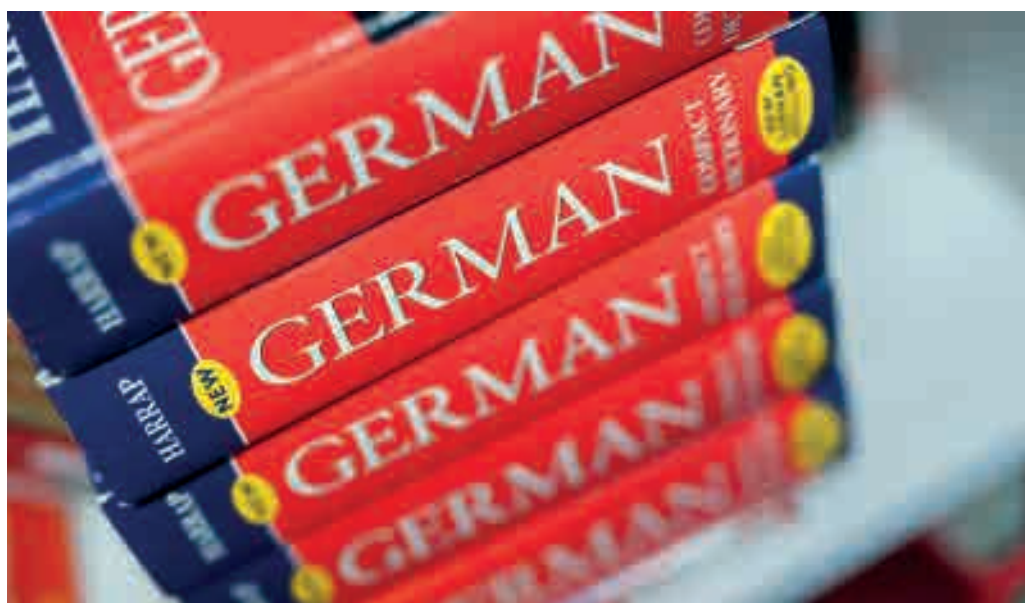
## IS THIS COURSE RIGHT FOR ME

Did you enjoy the language at GCSE? Do you want to become fluent and develop your linguistic and cultural knowledge? Good linguists are risk takers and naturally inquisitive. At this level you need to be rigorous in your learning and very accurate in your application of knowledge. This course will develop your language skills while giving you an insight into cultural and political issues in the German Speaking World.

## WHERE NEXT

Language learning is inextricably bound up with History, Culture, Business and Economics. There are well attested advantages of speaking more than one language. Linguists are increasingly in demand in many sectors of industry. You may consider a degree purely in Languages / Linguistics / European Studies, leading to a wide variety of careers including, but not limited to, Translation, Interpreting, Teaching, Publishing, Journalism and Marketing. A language can also be combined with most subjects at Higher Education level, for example Law, International Relations, Politics, Media, Business or Sciences. Awareness of a foreign language is also an asset when applying for apprenticeships. Jobs where this is particularly useful are Cabin Crew, Travel Services, Customer Service and Relations, Events Assistants and Public Services. Useful websites to research careers and wider progression options could include Planit plus, All About Careers and The Apprenticeship Guide.







# GRAPHIC DESIGN AND COMMUNICATION: A LEVEL

## MINIMUM ENTRY REQUIREMENTS

No specific course entry requirement. To see overall entry requirements to study at BHASVIC refer to page 146.

## WHAT WILL I STUDY

Our grade one outstanding course is broad and experimental in approach and includes one or more areas of graphic communication with the possibility of exploring a combination: illustration, advertising, packaging design, design for print, communication and computer graphics, multimedia, animation, web design, film, television and/or video. You will create design work to solve graphical problems and address commercial briefs. A charge of £190 applies to contribute towards the cost of materials used during the two years of this course, bursaries and payment plans are available. You are given a generous allocation of colour printer credits per component of work and once you have used them up you top them up at your own expense.

## IS THIS COURSE RIGHT FOR ME

Are you ambitious, motivated and creative? This course is a practical making/creating course which uses a vast range of specialist materials and art techniques, it is 60% practical portfolio and 40% practical exam. The first year of our Practical Portfolio component builds knowledge, understanding/skills through working on themes; the second year becomes more focused on you and the development of your personal ideas and professional practice.

## WHERE NEXT

We have a supportive and structured Visual Arts career progression programme to help you with your next steps into Higher or Further Education courses. Students progress on to careers in the creative industries such as Graphic Designer, Illustrator, Web Design, Commercial Print, Television, Media and Advertising.



## STUDENT PROFILE

# Dan

### **PREVIOUS SCHOOL:**

Blatchington Mill  
School

### **STUDYING AT BHASVIC:**

Geography, Business and  
Graphic Design A levels

BHASVIC is a great place to study, it's a sociable and exciting place to be! The college has lots of courses available with an option to pick an additional subject in the second year to complement our studies and areas of interest. I chose Interactive Media, which was great! I want to have a gap year after college which will involve travel before I move to London to study property management.



# HEALTH AND SOCIAL CARE: BTEC LEVEL 3

## MINIMUM ENTRY REQUIREMENTS

4 in English Language or English Literature GCSE. To see overall entry requirements to study at BHASVIC refer to page 146.

## WHAT WILL I STUDY

In year 1 you will study Human Lifespan Development (Unit 1) and Meeting Individual Care and Support Needs (Unit 5). In year 2 you will study Working in Health and Social Care (Unit 2) and Sociological Perspectives (Unit 10). You will learn the theoretical basis for providing good quality care, examining how practitioners use legislation, policies, and communication to implement professional practice. Coursework is based around applying knowledge learnt to a Health and Social Care setting so it is very vocational. The college actively promotes students doing work experience placements locally so they are able to develop their skills in working with others and apply their learning to practical scenarios.

## IS THIS COURSE RIGHT FOR ME

This course is ideal for students planning on a career within Health and Social Care. The BTEC Extended Certificate is equivalent to one A level (2 years) and students must have a commitment to assessment via course work and exams. Work experience will be required of all students for a minimum of 25 hours in each year so students can build up the knowledge and skills that are essential when progressing into a degree or career in the Health and Social Care sector.

## WHERE NEXT

This subject is ideal for progression onto vocational degrees or apprenticeships such as Nursing, Midwifery, Teaching, Social Work, Mental Health and Counselling. It also provides an excellent foundation for anyone going directly into a health or social care related career.



Health & Social Care

Bo



# HISTORY (MEDIEVAL AND EARLY MODERN) / (MODERN): A LEVEL

## MINIMUM ENTRY REQUIREMENTS

4 in English Language GCSE. To see overall entry requirements to study at BHASVIC refer to page 146.

## WHAT WILL I STUDY

Common to each of our History courses are narratives that are full of intrigue, heroism, conflict and struggle. You will investigate some of the greatest personalities and events of the past: William the Conqueror, Lenin, Mao, the Crusades, the struggle for democracy and equality in Britain, the Cold War. Each of these topics illuminates the present whilst being fascinating in their own right.

## WHEN APPLYING PLEASE DECIDE BETWEEN ONE OF THE TWO OPTIONS BELOW TO STUDY.

### HISTORY A LEVEL (MEDIEVAL AND EARLY MODERN)

You will study "Conquest, Crusade and Control in the Medieval and Early Modern World"

Paper 1: The Crusades c.1095-1204

Paper 2: Anglo-Saxon England and the Anglo-Norman Kingdom c.1053-1106

Paper 3: The witch craze in Britain, Europe and North America, c 1580-1750

Paper 4/Coursework:

The Origin of the English Civil War. The course is 20% coursework, and 80% external exam.

### HISTORY A LEVEL (MODERN)

You will study "Democracy, Dictatorship and Social Change in the Modern World"

Paper 1: Russia from Lenin to Yeltsin 1917-91

Paper 2: Mao's China 1949-76

Paper 3: Protest, Agitation and Parliamentary Reform in Britain c.1780-1928

Paper 4/Coursework:

The Origin of the Cold War. The course is 20% coursework, and 80% external exam.



### IS THIS COURSE RIGHT FOR ME

Do you want to discover more about the most significant events and people in history? Are you fascinated about what we may be able to learn from the past? Do you enjoy discussion, debate, reading and research? History encourages independent thinking and really suits students who enjoy reading, questioning and debate. Lessons will mainly be seminar style and your learning is supported by foreign and local trips, University study days and student conferences. History is even more engaging when it is seen in action. We invite visiting academics, take trips to local historical sites such as Battle, Pevensey and the Banqueting House; arrange study and lecture conferences; visit universities and their archives and other major museums such as the National Portrait Gallery, British Army Museum and Mary Rose. We also have a fantastic history of foreign travel, including recent trips to China, Russia, Germany, Italy, and Sicily.

### WHERE NEXT

History is a highly esteemed qualification as it develops rigorous analytical, evaluative and communication skills which are transferable to further study of the subject. This may be through University, Further Education, direct entry into apprenticeships or work. History is very highly regarded by universities and employers for its rigour and the skills that you gain can take you in many varied and interesting career directions including academia, the media, business and the legal professions. Jobs which directly relate to the subject might include Heritage Manager, Conservation Officer, Museum Education or Curation and Teaching. Jobs where this subject would be useful might include Archivist, Journalist, Civil Service, Information Officer, Solicitor or a PPC Specialist. Useful websites to research careers and wider progression options could include the Historical Association, National Trust, All About Careers and The Apprenticeship Guide.



# HISTORY OF ART: A LEVEL

## MINIMUM ENTRY REQUIREMENTS

4 in English Language GCSE and 4 in English Literature GCSE. To see overall entry requirements to study at BHASVIC refer to page 146.

## WHAT WILL I STUDY

History of Art is a fascinating course that offers the opportunity to explore our global cultural heritage. The course is built on three key elements: Visual Analysis; Themes and Periods. You begin with a course in visual literacy that acquaints you with the essential concepts, skills and vocabulary to analyse fine art, sculpture and architecture. Themes are broad-based investigations into artistic developments and connections between movements and periods across time and space. You explore works in relation to two of the three following themes: War, Nature and Identities. Finally, you focus on two artistic periods, for example, the Renaissance in Italy or Modernism in Europe and research in detail the relationships between key artists, concepts and their context. Throughout the course, you will learn how to analyse and make critical judgments about art while also building an understanding of the significance and contribution of key individual artists and the relationship between art, technology, society and politics across the entire world.

## IS THIS COURSE RIGHT FOR ME

History of Art is an excellent option for any student who is interested in visual culture and the world around them. It stands as a marvellous complement to practical visual arts subjects but would be of equal interest to English, History, Media, and Sociology or Politics students. It is analytical in nature and is assessed by means of two written examination papers. Lessons are seminar-based and always involve discussion of themes or key works. You will be encouraged to undertake significant individual research via reference works, films, television programmes or some of the huge range of podcasts and resources available via the internet. Moreover, we will have many opportunities for visits to public galleries, museums and installations.



## WHERE NEXT

The cultural sector in the UK is crucial to the economic health of the nation and provides a massive range of job opportunities, including Art Management, Advertising, PR, Curatorship, Publishing, Design and Education. Studying History of Art can open many doors directly in to these careers. Perhaps equally important are the widely transferrable skills it fosters that can apply to an even broader range of careers in Business, Law, Journalism and the Media. We live in a visual world and people with the ability to process, analyse and re-present ideas are highly prized.





# INFORMATION TECHNOLOGY (I.T.) (DIGITAL MARKETING & WEB DESIGN): BTEC LEVEL 3

## MINIMUM ENTRY REQUIREMENTS

4 in English Language GCSE. To see overall entry requirements to study at BHASVIC refer to page 146.

## WHAT WILL I STUDY

You will learn about how contemporary people and businesses use technology in a range of ways. As part of this you will explore social media websites, the ways they can be used to promote products and services and the potential pitfalls when using them for business purposes. You will develop a social media strategy for a business and implement it, developing and posting content and interacting with others. You will also learn about IT systems and the design, creation, testing and evaluation of a relational database system to manage information.

In Year 2 you will also learn the creative, technical and scripting skills needed to be a website developer.

## WHERE NEXT

This qualification will also give you broader skills which can be transferable to most sectors of the economy. Students can continue with their studies to progress to a University degree which may be broader than the subject, such as engineering, artificial intelligence and games development. The course also prepares students for direct entry into a range of careers in the computing industry through apprenticeships or work such as Social Media Specialist, Content Developer, Web Developer and IT Project Manager.

## IS THIS COURSE RIGHT FOR ME

This course is the equivalent of an A level. The nature of IT and its use throughout all aspects of modern society means that it is useful both for students with a wide range of interests as well as by those with a clear focus on this area. The latter often combine this course with one or more from: Business Studies A level / BTEC, Computer Science A level, Computing BTEC, Graphics A level, and related courses in Media, Economics or Sciences.





# LAW: A LEVEL

## MINIMUM ENTRY REQUIREMENTS

6 in English Language or 6 in English Literature GCSE. To see overall entry requirements to study at BHASVIC refer to page 146.

## WHAT WILL I STUDY

Law will introduce you to the workings of the legal system, including courts, appeals, legal personnel, law-making and law reform. Further study embraces more conceptual issues including morality and justice and themes including euthanasia, equality and changes in society. There will be a trip to the Supreme Court and the Royal Courts of Justice as well as opportunities to listen and engage with visiting speakers. The Criminal Law specification covers murder, manslaughter and defences such as insanity. The Law of Tort, covers topics such as negligence, nuisance and occupiers' liability. You will then have an opportunity to express a preference to study either Human Rights Law or the Law of Contract. Contract Law includes formation of a contract, offer and acceptance, terms, discharge, consumer rights and remedies. The Human Rights option focuses on the nature, protection, restriction and constitutional position of human rights under UK law.

## IS THIS COURSE RIGHT FOR ME

Do you enjoy debating, expressing your opinions and justifying them based on evidence? Do you enjoy reading and expressing yourself in writing? Are you good at remembering facts, recalling them and applying them to different scenarios? Are you thinking of a career in Law or intending to study Law at University? Do you know your rights and responsibilities? Do you want to study a 'new' subject? If the answer is yes to any of the above questions then this is the right course for you.

## WHERE NEXT

Studying A level Law gives students many transferable skills such as problem solving, critical analysis and negotiation skills, that will enable them to progress to University or to apprenticeships and the world of work. Students could continue studying Law or Law related courses at University such as Criminology, International Relations, Public Services Management and Business. They also have the choice to use their work based skills to seek employment in the legal or business world or as apprentices. Legal apprentices train on the job at law firms to eventually become Solicitors, Chartered Legal Executives or

Paralegals. Students may also choose to apply for related apprenticeship vacancies in broader sectors of the economy. Jobs directly related to Law could include Barrister's Clerk, Chartered Legal Executive, Company Secretary, Licenced Conveyancer and Paralegal. Possible future careers where Law qualifications could be useful are Advice Worker, Chartered Accountant, Civil Service Administrator, Human Resources and Data Analyst. Useful websites to research careers and wider progression options could include The Lawyer Portal, Law Careers.net, The Law Society, All About Careers and The Apprenticeship Guide.





# LAW (APPLIED): BTEC LEVEL 3

## MINIMUM ENTRY REQUIREMENTS

4 in English Language or 4 in English Literature GCSE. To see overall entry requirements to study at BHASVIC refer to page 146.

## WHAT WILL I STUDY

The BTEC Applied Law course is an enjoyable but challenging way of learning about how our English Legal System works. You will take a practical approach to learning about how laws are made and the structure of the court system. In the first year, you will learn the basics of criminal liability and the tort of negligence and will apply this knowledge to situations involving fictitious clients. In the second year you will build on this knowledge and study criminal law and the law of tort in more depth, including the law on homicide and police procedure. You will develop key skills in legal research and communication, whilst also developing the independent learning skills needed for University study and future employment. This course will give you the equivalent of one A level over two years of study and is 40% coursework based.

## IS THIS COURSE RIGHT FOR ME

Do you know your rights? Are you interested in a career in law or intending to study law or a law related course at University? The Applied Law BTEC is a unique qualification in the legal sector. It provides an excellent introduction to law and gives you an edge when progressing to Higher Education and employment.

## WHERE NEXT

Many of our students have gone to University to study Law or Law-related courses such as Criminology. Others have used their work based skills to seek employment in the legal or business world or as apprentices. Jobs directly related to Law could include Barrister's Clerk, Chartered Legal Executive, Company Secretary, Licenced Conveyancer and Paralegal. Possible future careers where Law qualifications could be useful are Advice Worker, Chartered Accountant, Civil Service Administrator, Human Resources and Data Analyst. Useful websites to research careers and wider progression options could include The Lawyer Portal, Law Careers.net, The Law Society, All About Careers and The Apprenticeship Guide.





# MANDARIN: CAMBRIDGE PRE-U

## MINIMUM ENTRY REQUIREMENTS

6 in Mandarin GCSE or proven native speaker (to be shown by an initial internal test). To see overall entry requirements to study at BHASVIC refer to page 146.

## WHAT WILL I STUDY

You will continue to study Mandarin and will practice listening, reading, speaking and writing skills that will be examined on topics such as family, young people, education, the media, work and leisure and equality of opportunity. You will also learn about Chinese culture from the founding of the PRC through to the economy and the challenges facing emerging China. You will study a novel and a film and write on these in English.

## IS THIS COURSE RIGHT FOR ME

This course will be of interest to all students of languages with previous knowledge of Mandarin Chinese. If you enjoy the challenge of communicating with a wider audience, have the discipline to learn vocabulary, characters and grammatical rules and a curiosity to know the culture at a deeper level this is the right course for you.

## WHERE NEXT

This course will allow language students to go on to study at any University offering any Modern Foreign Language courses as well as complementing many other degrees such as Business, Law, Politics and International Relations amongst many. There is a great demand for Mandarin speakers and this skill will open opportunities in many career pathways for example Law, International Relations, Politics, Media, Business or Sciences. Awareness of a foreign language is also an asset when applying for apprenticeships. Jobs where this is particularly useful are Cabin Crew, Travel Services, Customer Service and Relations, Events Assistants and Public Services. Useful websites to research careers and wider progression options could include Planit plus, All About Careers and The Apprenticeship Guide.







# MATHS: A LEVEL (DOUBLE)

## MINIMUM ENTRY REQUIREMENTS

7 in Maths GCSE and 4 in English Language GCSE or 4 in English Literature GCSE. To see overall entry requirements to study at BHASVIC refer to page 146.

## WHAT WILL I STUDY

In the first year you will complete and sit your regular Maths A level. In your second year, you will complete your Further Maths A level, comprised of a compulsory 50% Pure Maths and a further 50% determined by options chosen at the end of the first year. You will need to be resilient, and enjoy getting stuck and overcoming problems. Many classes make their own social network groups so they can post problems to each other and help each other along. There are Teacher-led Subject Extensions daily, Drop ins with the Doubles (A2 students), a vast array of teacher websites and video networks covering all content for support.

## IS THIS COURSE RIGHT FOR ME

This is a course for students who love Maths and want to dedicate a great deal of their time at BHASVIC to Maths classes. You will spend at least 9 hours per week on independent study, culminating in the submission of an assignment each week. You will sit 1.5 hour tracking tests every half term, completing your A level Maths exams in your first year, and your A level Further Maths exams in your second year. This is a very intense, rewarding course - especially at the beginning where students are not used to such a fast pace, and such a high workload outside of class. You will need to have strong GCSE algebra skills when you arrive here, as the jump from GCSE to A level can feel quite vast at first. All students find this course challenging at some point, but the difference between a successful and an unsuccessful student is how they respond to that challenge. That said, if you love Maths, this course will transform you completely by the end of the two years into a very competent mathematician.

## WHERE NEXT

Studying Mathematics helps students develop logical thinking, problem-solving and decision-making skills valued by both universities and employers across many job sectors. Maths is a STEM subject (Science, Technology Engineering and Maths) where there is a current skills shortage for employers. Skills from these disciplines are in demand in the job market and have good long term career prospects. There are jobs available relating to diverse interests spanning a wide variety of sectors including entertainment, health, transport, sport, finance, space, energy, agriculture and construction. Jobs directly related to the subject could include Actuarial Analyst, Chartered Accountant, Data Scientist, Investment Analyst, Teacher and Statistician. Careers where Maths

can be useful include Financial Manager, Insurance Underwriter, Meteorologist and Quantity Surveyor. Studying Maths and Further Maths A level will be excellent preparation to study Maths or a related discipline at University. Apprenticeships requiring highly numerate individuals will also hold this A level subject in high regard. Useful websites to research careers and wider progression options could include Future Morph, Where Can STEM take you?, Maths Careers, All About Careers and The Apprenticeship Guide. Please Note: If you want to apply for the top universities in Physics, Maths, Engineering, then Double Maths is essential. STEP & STRETCH classes are also available to help you prepare for top University entry exams if needed.





# MATHS: A LEVEL (SINGLE)

## MINIMUM ENTRY REQUIREMENTS

6 in Maths GCSE and 4 in English Language GCSE or 4 in English Literature GCSE. To see overall entry requirements to study at BHASVIC refer to page 146.

## WHAT WILL I STUDY

This is a two year course, and all assessment is via three 2 hour exam papers taken at the end of the two years - P1, P2 and the Applied paper which is 50% Statistics and 50% Mechanics. Having the drive to access the support on offer at BHASVIC is essential to success. This support can be found in class or class social media groups, lunch time daily teacher-led Subject Extensions, and drop-ins with Doubles students. There is also a vast array of teacher websites and video networks covering all content. Students will need to be resilient, enjoy getting stuck and overcoming problems.

## IS THIS COURSE RIGHT FOR ME

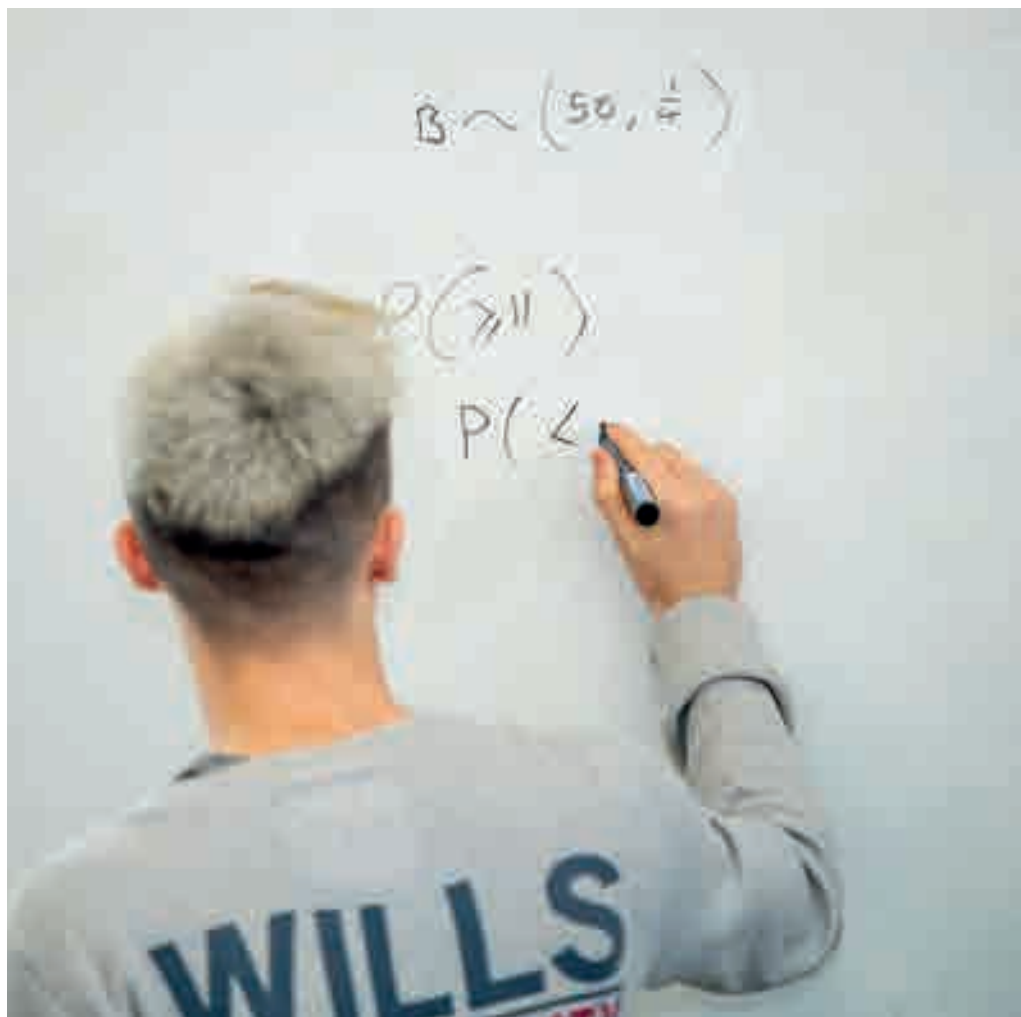
This course is demanding and will feel like a big step up from GCSE at first. But if you enjoy working hard and enjoy tackling a difficult problem, then this is the course for you. BHASVIC Maths will stretch and challenge all of its learners, and provides plenty of support along the way. Students will spend at least 4.5 hours per week on independent study, culminating in the submission of an assignment each week. Students sit a 1.5 hour tracking test every half term, with a progression exam at the end of their first year. Having strong GCSE algebra skills will really help when starting this course, but with hard work and perseverance, any student can succeed. All students find this course challenging at some point, but the difference between a successful and unsuccessful student is how they respond to that challenge.

## WHERE NEXT

Studying Mathematics helps students develop logical thinking, problem-solving and decision-making skills that are valued by both universities and employers across many job sectors. Mathematics is part of the STEM subjects (Science, Technology Engineering and Maths) where there is a current skills shortage for employers. Skills from these disciplines are in demand in the job market and have good long term career prospects. Jobs are available relating to diverse interests and they span a wide variety of sectors including entertainment, health, transport, sport, finance, space, energy, agriculture and construction. Jobs directly related to the subject could include Actuarial Analyst, Chartered Accountant, Data Scientist, Investment Analyst, Teacher and Statistician. Careers where Maths can be useful include Financial Manager, Insurance Underwriter, Meteorologist and Quantity Surveyor.

**WHERE NEXT CONT.**

Studying Maths A level will be excellent preparation to study Maths or a related discipline at University. Apprenticeships requiring highly numerate individuals will also hold this A level subject in high regard. Useful websites to research careers and wider progression options could include Future Morph, Where can STEM take you, Maths Careers, All About Careers and The Apprenticeship Guide. Please Note: If you want to apply for the top universities in Physics, Maths, Engineering, then Double Maths is essential. STEP & STRETCH classes are also available to help you prepare for top University entry exams if needed. Some University departments in the following subjects may prefer students to have A level Maths if possible: Physics, Psychology, Economics, Computing, and Accountancy. This can be checked with admissions departments at each University.





# MATHS: GCSE

## MINIMUM ENTRY REQUIREMENTS

3 or below in Maths GCSE. To see overall entry requirements to study at BHASVIC refer to page 146.

## WHAT WILL I STUDY

This subject will be an opportunity to re-take your GCSE Maths if you didn't get a pass grade first time. At BHASVIC we have an excellent track record working with students to achieve this important qualification. We offer a fresh start, in a new, more mature environment than school, where we will support you in getting to where you need to be. The subject will teach everything at Foundation level.

## IS THIS COURSE RIGHT FOR ME

Though all students who don't have a grade 4 at Maths GCSE are required to take this subject, you will have the full support of the BHASVIC Maths department behind you. Lessons will be engaging, and will focus on getting you to where you need to be to succeed. You may even decide that you want to aim higher and strive for a 5 (or higher!), in which case we will be with you every step of the way.

## WHERE NEXT

A pass grade in Maths is a minimum requirement for most jobs and Higher Education courses.





# MEDIA STUDIES: A LEVEL

## MINIMUM ENTRY REQUIREMENTS

4 in English Language GCSE. To see overall entry requirements to study at BHASVIC refer to page 146.

## WHAT WILL I STUDY

The course is a combination of theory, research and practical application, therefore requiring good written and communication skills. At A level you will undertake critical analysis of a range of different media forms including television, advertising, print media and online media. You will apply a variety of theoretical approaches, along with an understanding of media language to investigate how texts position audiences to respond in particular ways. Additionally you will produce an individual cross-media practical production working across print and moving image. Practical work is worth 30% of the final grade; and the two written examinations make up the remaining 70%.

## IS THIS COURSE RIGHT FOR ME

You will develop excellent critical thinking skills and a detailed understanding of how the media works; focusing on media language, representation, audience and industry. The course is best suited to students with the ability to think critically, work independently and who enjoy written analysis of media texts. You need to be a creative individual with a strong work ethic. If you are curious about the world around you and keen to become part of the organisations which shape our views of the world, then this is right for you. Goes with any theory-based, essay subject such as Film Studies, English, Digital Creative Media, IT, Computer Science etc.

## WHERE NEXT

Studying Media A level gives students a variety of future career directions and transferable skills for their next steps. Critical thinking, along with analytical and practical skills is highly regarded and beneficial in many different professional and Higher Education contexts. The Creative Industries are a thriving, vital part of the UK's economy and students can begin a career in this sector through study in related disciplines at University or through direct entry to apprenticeships or working in the media industries. Jobs directly related to Media include: Media Planner, Multimedia Specialist, Programme Researcher, TV Production Assistant, Public Relations Officer, Runner and Social Media Manager. Other jobs where Media would be beneficial are: Advertising Account Executive, Broadcast Journalist, Editorial Assistant, Event Manager and Market Researcher. Useful websites to research careers and wider progression options are: Creative Skillset, Hiive, All About Careers and the Apprenticeship Guide.





## STUDENT PROFILE

# Holly

### **PREVIOUS SCHOOL:**

Downlands  
Community School

### **STUDYING AT BHASVIC:**

Politics, History, Graphic  
Design A levels

I really like the environment at BHASVIC – I feel at home here and have been amazed at how much support is available. It's close to the centre of Brighton which makes travelling to and from college easy. BHASVIC is a great place to meet new people which has given me lots of confidence for what I'm doing next. After A levels I would like to go on a gap year, travelling to South Asia and then hope to go to Bristol University to study Liberal Arts.



# MUSIC: A LEVEL

## MINIMUM ENTRY REQUIREMENTS

6 in Music GCSE if taken or Grade 5 instrument and 4 in English Language GCSE. If you believe you are grade 5 or above on your instrument, but have not taken a formal exam, you will need to come to a theoretical and practical assessment with the music teachers at BHASVIC in Feb/March. Students who do not have Grade 5 theory upon entry will take this exam during the first year of the course. To see overall entry requirements to study at BHASVIC refer to page 146.

## WHAT WILL I STUDY

Studying Music A level will develop your skills in solo and ensemble performance, composition and musical analysis; improving your practical and theoretical musical skills. You will perform as a soloist and as part of an ensemble every half term, developing your skills and confidence as a performer in preparation for your examined performance during the final Spring term. You will learn to compose for different combinations of instruments and voices in a wide variety of styles. You will study a wide range of music: looking at the immense musical and social changes during the 18th and 19th century and their impact on the symphony, and studying twentieth century music, which so challenged audiences at the time that it sometimes caused riots! You will also look at the many exciting developments in jazz music. Studying a diverse range of music in depth will improve your aural and analytical skills and prepare you for the written exam. All music students will also benefit from participating in BHASVIC's instrumental and vocal ensembles and concerts and will take part in projects with visiting professional musicians.

## IS THIS COURSE RIGHT FOR ME

This exciting and challenging course requires strong performance skills, creativity and academic ability. It suits people who are good performers on their instrument or voice, enjoy composing and are open-minded in their approach to listening to and analysing a diverse range of music. Studying A level Music gives you the power to engage with and appreciate music more deeply and will greatly develop your skills as a musician.

## WHERE NEXT

Music A level involves practical and creative work but is sufficiently academically rigorous to be accepted as a subject for entry to most University courses, including those unrelated to Music. Studying Music A level is also a step towards many different careers including Performance, Composition, Sound Production and Instrumental, Vocal or Class Teaching as well as a wide range of jobs such as event Management, Broadcasting and Journalism. Careers where music is directly related to the job include Musician, Composer, Producer, Sound Engineer, Music Teacher and Music Therapist. Careers where studying Music could be helpful include arts Administrator, Event Manager, Stage Manager, Sales, Tour Manager, Journalist and Public Relations Officer. Students can choose to apply for a performance or composition degree at a conservatoire or a University course which combines the academic study of music with performing and composing. Alternatively, students can embark on an apprenticeship or job in the sector. Useful websites to research careers and wider progression options include [Careers in Music](#), [UK Music](#), [All About Careers](#) and the [Apprenticeship Guide](#).





# MUSIC PERFORMANCE: BTEC LEVEL 3

## MINIMUM ENTRY REQUIREMENTS

4 in GCSE Music or BTEC Level 2 Merit and Grade 5 standard or above on main instrument desirable but not essential. Suitability for the course will be by audition in which you will be required to perform a 2-3 piece on your principal study and undertake short improvisation and general musicianship tests. To see overall entry requirements to study at BHASVIC refer to page 146.

## WHAT WILL I STUDY

The course focuses on performance in both ensemble and solo settings, general musicianship as well as researching and investigating professional practice in the pop music industry and the range of opportunities for solo performance. You will be expected to respond to set performance briefs alongside developing your knowledge of the fundamental rudiments of musical language. The course comprises 4 units which are: Ensemble Music Performance; Practical Music: Theory and Harmony; Professional Practice in the Music Industry; Solo Performance. Although there is no requirement to have Grade 5 Theory you will have to learn about music theory on the course – it's not entirely practical!

## IS THIS COURSE RIGHT FOR ME

Studying BTEC Level 3 Music gives you the opportunity to formalise and deepen your knowledge, experience and understanding of the contemporary music industry. You will analyse performance practice and incorporate current trends into your own music making in both solo and ensemble settings, as well as strengthening your knowledge of the rudiments of music. This knowledge will then be put into practical use in vocational contexts to deepen your awareness of relationships within the organisations found in today's ever evolving music industry. Although the course is largely practical, and mostly focused on performance of contemporary music, 2 units have externally assessed written exams.

## WHERE NEXT

Performing, Composing, Music Production, Music/Event Management, Music Broadcasting/Journalism and the wider creative industries. The rigour of the course will provide the learner with the relevant qualification base to study at University or music conservatoire.





# MUSIC THEORY

## MINIMUM ENTRY REQUIREMENTS

Grade 5 theory is a requirement for completing Music A level. You will take this exam during year 1 if you do not hold this qualification at entry. To see overall entry requirements to study at BHASVIC refer to page 146.

## WHAT WILL I STUDY

Developing musical literacy forms a key part of a rounded education for all music students and supports performance and composition.

By studying this course you will acquire: a knowledge of the notation of western music, including the signs and terminology commonly employed; an understanding of fundamental musical elements such as intervals, keys, scales and chords; an ability to apply theoretical knowledge and understanding to score analysis.

## IS THIS COURSE RIGHT FOR ME

Students who study this course should be able to play an instrument or sing. The theory course is open to all students at all grade levels including those who have not yet studied any music theory. The course is open to music and non-music students. If you are studying A level Music and have not yet achieved a Grade 5 Music Theory qualification then you must study the Grade 5 Theory course. Students who have achieved Grade 5 Music Theory can study Grades 6-8.

## WHERE NEXT

The Music Theory course supports the A level Music course. Grade 8 Music Theory is highly regarded and, alongside Grade 8 Practical on an instrument or voice, may be accepted by some universities and conservatoires as an alternative to A level Music.





# PERFORMING ARTS (ACTING): BTEC LEVEL 3

## MINIMUM ENTRY REQUIREMENTS

4 in English Language GCSE. You must also have a proven interest in performing, perhaps as a member of a drama group / organisation or have been involved in drama at school. To see overall entry requirements to study at BHASVIC refer to page 146.

## WHAT WILL I STUDY

If you are excited about the world of theatre and are dedicated to acting, then you will enjoy this course. There is a strong emphasis on practical acting methods and opportunities to develop skills in creativity and performance. You will explore existing practitioners as well as developing your own technique through group pieces and live performance. You will be required to undertake a lot of independent research into what it takes to be an actor. There is a £100 charge for attending performances throughout the two years of this course. Bursaries and payment plans are available.

## IS THIS COURSE RIGHT FOR ME

You will need to have confidence in yourself as an actor and have an ability to participate in a range of practical acting workshops to develop skills and acting techniques. You will have to carry out a lot of independent research through the two years. The course goes well with any creative or humanities subjects.

## WHERE NEXT

This course provides skills applicable to developing a career in the performing arts industry. You will also be able to progress on to a degree level course in Performing Arts or related fields. Many of the skills are transferable and can be applied to higher level study in many fields or in the world of work.







# PHILOSOPHY: A LEVEL

## MINIMUM ENTRY REQUIREMENTS

6 in English Language GCSE or 6 in English Literature GCSE. To see overall entry requirements to study at BHASVIC refer to page 146.

## WHAT WILL I STUDY

In Philosophy, you will encounter the work of some of the greatest thinkers in the western tradition. The Greeks invented western philosophy but the tradition began with Socrates, Plato and Aristotle and has continued uninterrupted up until the present day. You will study aspects of the work of philosophers like John Locke, David Hume, Rene Descartes and Bertrand Russell during the first year of your course in epistemology (the theory of knowledge) and ethics. You will be expected to develop a critical and evaluative approach to their arguments and you will learn how to construct and develop your own responses to them.

## IS THIS COURSE RIGHT FOR ME

Philosophy is a stimulating subject, but a demanding one. You must be prepared to read, think logically and write about ideas and concepts which can be difficult to understand but you will learn to identify strengths as well as weaknesses in many standard arguments of the philosophical tradition. In addition, you will develop the skill of constructing your own arguments in response to the arguments of others and you will be expected to develop your own point of view in relation to a range of philosophical questions.

## WHERE NEXT

Philosophy students tend to have an inquisitive nature, and are willing to question just about anything and everything. Philosophy is a subject that has a very wide application in future careers. Due to its concentration on thinking about difficult ideas and challenging concepts, you will be able to use these transferable skills in a wide range of progression contexts. There are a number of transferable skills that can be gained from studying Philosophy. These include: logical and analytical thinking and reasoning, problem solving, written and oral communication, able to interpret, condense and clarify information, able to formulate your own opinions and defend them in debate and the ability to interpret and analyse a variety of different information. Industry sectors where a Philosophy qualification may be considered an advantage are: Journalism, Law, Social Services, Business, Education, IT and The Civil Service. Useful websites to research careers and wider progression options could include Prospects, All About Careers and The Apprenticeship Guide.





# PHOTOGRAPHY: A LEVEL

## MINIMUM ENTRY REQUIREMENTS

No specific course entry requirements. To see overall entry requirements to study at BHASVIC refer to page 146.

## WHAT WILL I STUDY

Our grade one outstanding course focuses on learning photographic processes that give you the skills to create individual, expressive work. This covers black and white photography which is darkroom based and colour photography using digital techniques using PCs, Photoshop CS6 software, laser/inkjet printers, lenses, lighting kits and studio techniques. A charge of £190 applies to contribute towards the cost of materials used during the two years of this course, bursaries and payment plans are available. You are given a generous allocation of colour printer credits per component of work and once you have used them up you top them up at your own expense.

## IS THIS COURSE RIGHT FOR ME

Are you ambitious, motivated and creative? This course is a practical making/creating course which uses a vast range of specialist materials and art techniques. Our Practical Portfolio coursework is supported by a 3000 word contextual/personal study essay and Exam Unit. Learning to use traditional and digital SLR cameras helps you develop technical skills alongside creative and expressive ways of working preparing you for further study and employment in the photographic creative industries.

## WHERE NEXT

Studying Photography will enhance your creative, social and cultural understanding as well as develop your specialist technical knowledge. Students will undertake work to complete a portfolio on an ongoing basis with support from our experienced staff. Progression from this course can be directly to University, employment or to a Photography Foundation course. We have a supportive and structured Visual Arts career progression programme to help you with your next steps. Students progress to careers in the creative industries such as Fashion, Medical Illustration, Photography, Photo Journalism, Commercial Photography, Photo Editing, Film/Animation, Television, Media and Advertising. Useful websites to research careers and wider progression options could include Creative Skillset, Prospects, All About Careers and The Apprenticeship Guide





# PHYSICAL EDUCATION: A LEVEL

## MINIMUM ENTRY REQUIREMENTS

4 in English Language GCSE, 4 in Science GCSE and 6 in Physical Education GCSE. Club-level standard practical performance within one selected sporting activity. To see overall entry requirements to study at BHASVIC refer to page 146.

## WHAT WILL I STUDY

Physical Education is not just about sports, it is about developing a knowledge of the impact sport can have on health, well-being and the human body. Areas studied are applied anatomy and physiology, exercise physiology, biomechanics, skill acquisition, sports psychology, sport and society and contemporary issues in physical activity and sport. This course will be assessed via one exam assessment at the end of the second year to cover all of the modules taught. Practically you will also be assessed in one sporting activity, alongside an oral analysis of sporting activity performance.

## IS THIS COURSE RIGHT FOR ME

To study this subject you need to be a keen sportsperson, who plays one sport at a high level. As a Physical Education student you must have an interest in the theoretical content of sport as the subject covers a wide range of these concepts. Please also consider our BTEC courses in Sport or Sport and Exercise Sciences as alternative options that may be of interest you.

## WHERE NEXT

Whilst studying a Physical Education A level you will learn a range of skills that will help you in your future career, for example, teamwork, resilience, competitive spirit, social, communication and analytical skills. Physical Education lends itself to a range of careers in sports and fitness as well as other industries, for example, nutrition, physiotherapy and chiropractic practice. Some careers that you could consider doing with PE include: Sports Scientist, PE Teacher, Physiotherapist, Professional Sportsperson, Sports Coach/Consultant, Sports Policy Adviser at local and national level, Diet and Fitness Instructor and Personal Trainer.





# PHYSICS: A LEVEL

## MINIMUM ENTRY REQUIREMENTS

6 in Maths GCSE and 2 6s in 2 Sciences at GCSE including Physics or Additional Science (not Applied Science). To see overall entry requirements to study at BHASVIC refer to page 146.

## WHAT WILL I STUDY

You will study forces, motion, electrons, waves and photons in the first year. Throughout this subject and especially in the second year you will apply your knowledge to astrophysics, motion and electromagnetism. You will learn how to use physical quantities and units, scalars and vectors. Practical work is an important aspect, and students generally do one a week (no separate coursework component); students keep a lab book to evidence their skills. Goes well with Maths, Chemistry, Biology, Computing in particular.

## IS THIS COURSE RIGHT FOR ME

Successful physics students enjoy maths and particularly algebra. They are curious about how things work and thrive on the challenges of problem solving. They work effectively both on their own and in groups. They work carefully and with precision in both their practical and written work. Students will succeed most if they are self-motivated independent learners. Lessons are interactive and build upon independent study. There are lots of opportunities to get help and support from the department. Mathematical fluency is vital for success at A level. We run an 'in-house' Maths for Physics course for students who do not do A level Maths but this does not lead to a qualification. If you want to study Physics at University you must study Maths A level as well.



## WHERE NEXT

A Physics A level is a great starting point for a career in scientific research, as well as in a range of careers in Business, Finance, IT, Astrophysics, Geophysics, Materials Science, Forensic Science, Medical Science (e.g. Medical Physicist) and Engineering. Physics will help you to build up your problem solving, research, and analytical skills. With these skills you will be able to test out new ideas plus question and investigate other peoples' theories, which is useful for any kind of job that involves research or debate. Job roles where Physics is useful would include: Metallurgist, Nanotechnologist, Radiation Protection Practitioner, Teacher. Jobs where your degree would be useful include: Investment Analyst, Meteorologist, Nuclear Engineer, Operational Researcher, Patent Attorney, PPC Specialist and Systems Developer. Useful websites include the Institute of Physics, Physics.org, All About Careers and The Apprenticeship Guide.





# POLITICS: A LEVEL

## MINIMUM ENTRY REQUIREMENTS

4 in English Language GCSE. To see overall entry requirements to study at BHASVIC refer to page 146.

## WHAT WILL I STUDY

Politics is an important, interesting and ever-changing course - it gives you the opportunity to debate the political issues of the day, encourages you to understand how political systems work and appreciate why politics matters. The introduction to British politics covers the framework of our political system including the nature of the Constitution, how Parliament works, and the role of the Executive. You will also get to investigate your role in the political process by looking at elections and voting behaviour, understanding more about the main political parties and considering what else influences political decisions. In addition, you will also study the core political ideas of conservatism, socialism and liberalism. In your second year you will study an additional ideology before undertaking an in-depth study of either Politics of the USA, which includes the US Constitution, the three branches of government (executive, legislature and judiciary), elections, and civil rights or Global Politics, including theories of global politics, sovereignty and globalisation, global governance, human rights, regionalism and the European Union.

## IS THIS COURSE RIGHT FOR ME

If you have an interest in current affairs and enjoy debate and discussion, this subject is for you. Everyone is affected by politics and the actions of politicians, therefore studying and talking about politics are a necessary part of the life that we lead. You must enjoy reading about current affairs and watching programmes such as Question Time and Politics Live, and you must be interested in how and why decisions are made by politicians in a democratic system.

## WHERE NEXT

From social and political research to journalism, marketing and HR, a qualification in politics opens up a variety of career opportunities as well as developing a broad range of skills. You will acquire a good understanding of politics on a local and national level. You will gain a number of transferable skills, including being able to debate and examine issues from all standpoints, an ability to identify, analyse and find solutions to problems and to make reasoned arguments as well as gain excellent communication skills. Jobs directly related to politics could include: Civil Service, Government Social Research Officer, Politician's Assistant, Public Affairs Consultant, Social Researcher. Jobs where this subject would be useful include: Charity Officer, Forensic Accountant, Human Resources Officer, Local Government Officer, Market Researcher and Journalist. Useful websites might include Targetjobs, Prospects and All About Careers.





# PSYCHOLOGY: A LEVEL

## MINIMUM ENTRY REQUIREMENTS

4 in English Language GCSE or 4 in English Literature GCSE and 4 in Maths GCSE. To see overall entry requirements to study at BHASVIC refer to page 146.

## WHAT WILL I STUDY

Topics include conformity, obedience, resisting obedience, influences on social change, memory and why we forget, eye-witness testimony, development of attachments, maternal deprivation, orphan studies, definitions of abnormality, the causes and treatments of mental disorders: phobias; depression; OCD; schizophrenia, origins of psychology, approaches to psychology, the nervous system, neurons and synaptic transmission, brain localization, biological rhythms, the endocrine system, gender identity, forensic (criminal) psychology.

## IS THIS COURSE RIGHT FOR ME

Students must be interested in people, why people do things, say things and think things. Students must have an open mind, and be able to change their opinions in light of scientific evidence. Students must be really keen to develop their evaluative skills, using self-reflection and peer work. Students must realise that psychology is a rigorous scientific discipline and will be expected to work hard. Students will be supported in and out of lessons through challenging concepts, and will be expected to work independently and collaboratively throughout an ultimately rewarding two years. You will need good Maths and English skills.

## WHERE NEXT

Psychology is useful for any job that requires lots of interaction or an understanding of human behaviour and development. As a science, Psychology is a thriving academic discipline dedicated to the study of human behaviour and the connected thoughts, feelings, and motivations behind it. People with skills in Psychology are sought after in business, management, sport, teaching, research, social work and careers in counselling and healthcare. Skills that you will develop from studying Psychology will include analytical and organisational skills and learning about scientific research methods and collecting and working with data. Learning about human behaviour can also help to build your communication, teamwork and leadership skills. Jobs directly related to your degree could include: Psychologist (various specialisms), Teacher, Mental Health and Wellbeing Practitioner. Jobs where your degree would be useful include: Advice Worker, Human Resources Officer, Market Researcher and Play Therapist. Useful websites include British Psychological Society, Prospects, All About Careers and The Apprenticeship Guide.



## STUDENT PROFILE

# Harvey

### **PREVIOUS SCHOOL:**

Dorothy Stringer

### **STUDYING AT BHASVIC:**

Politics, Modern History,  
Economics A levels

I decided to come to BHASVIC because I had heard about the learning culture that exists here and that had always impressed me. The chance to come to such a successful and diverse college with so much on offer was my main reason for coming here. I love studying in the library as it is a great place to get stuck in to work and is a perfect example of BHASVIC's learning culture in action. Students here are really passionate about their learning! As well as my A levels I really valued being part of the Model United Nations society, which involved a residential trip which gave us the opportunity to meet a host of new people, debate some dynamic topics and learn more about the process and history of the United Nations.



# RELIGIOUS STUDIES: A LEVEL

## MINIMUM ENTRY REQUIREMENTS

4 in English Language GCSE. To see overall entry requirements to study at BHASVIC refer to page 146.

## WHAT WILL I STUDY

There are three elements to Religious Studies. The first is a study of religion. We will look at the foundations of religious beliefs, practices and philosophy. This raises questions on identity, afterlife, our place in the world and how to live a good life. Second, we look at philosophy of religion which looks at philosophical questions about God, the world, afterlife, evil and other areas too. We will question the nature of God, whether God's existence can be proved and other philosophical questions about identity and existence. Finally, ethics looks at both religious and non-religious ways to work out what is moral and then applies these to different areas of life.

## IS THIS COURSE RIGHT FOR ME

If you are interested in debating and have an open mind then this course is right for you. We will study many different religious and non-religious approaches to ethics and aspects of our relationship with the world and evaluate these enabling you to come to your own conclusions about these areas. We delve into a much wider range of ethical and religious issues in Religious Studies than in the subject of philosophy but this means that there is a lot of content. It builds on the themes in Religious Studies GCSE but goes much deeper into these focusing more on philosophy of religion and ethical theories rather than just a religious application.

## WHERE NEXT

Studying Religious Studies adds and develops many critical thinking skills and challenges the way you will look at your life. This is liked by employers as it develops new ways of thinking and approaching problems and develops creativity. It also shows you have thought and learnt about other cultures, values and positions to your own and reflected on these. Beyond this, the Religious Studies course develops your understanding of other cultures and belief systems, and excellent interpersonal skills and communication through the nature of philosophical discussions we will have. Religious Studies leads to many different University courses and career prospects. Many of these are in the service sector where the above skills become very useful when working with others. Such roles include Teaching, Social Care, Medicine, Nursing, Policing, Aid Work and more.





# SOCIOLOGY: A LEVEL

## MINIMUM ENTRY REQUIREMENTS

4 in English Language or 4 in English Literature GCSE. To see overall entry requirements to study at BHASVIC refer to page 146.

## WHAT WILL I STUDY

Sociology explores society and the interaction between institutions and individuals. You will study research in areas such as culture, socialisation, youth subcultures, globalisation and the digital world, crime and deviance and social inequality. Students will discover how sociologists use a range of research methods to gather data. Exciting areas of the syllabus are studying digital social media (Y1) and crime and deviance (Y2). Sociology differs from Psychology as psychologists study individuals whereas sociologists study groups – for example, we look at why marriage rates are very low generally or why women are twice as likely as men to instigate a divorce, whereas psychologists look at the pheromones and hormones that alter in your brain when you fall in love.

## IS THIS COURSE RIGHT FOR ME

Do you analyse people and their behaviour? Do you like to see two sides of an argument? Are you interested in why men are more criminal than women? Why are some people so rich and others so poor? If so then Sociology may be the subject for you. Sociology is an independent reading and essay based subject. Students will take active part in discussing ideas with their peers and as a whole class on a regular basis. Complementary subjects are Psychology, Health and Social Care, History, English and Geography. Students take 3 exams at the end of the second year, there is no coursework.

## WHERE NEXT

Studying Sociology involves analysis of society using theories such as Marxism, Postmodernism and Feminism. Sociology courses include methods of social research, as well as opportunities to gain skills in other areas including: the ability to think and act creatively and maintain a flexible mind, participate in discussions, develop opinions, propose ideas and theories and base conclusions on statistical research. Students could continue their studies at degree level or consider a range of apprenticeships or jobs where they can apply the skills that have developed from the qualification. Possible future careers could include: Criminology, Advertising and Marketing, Advice Worker, Further Education Teacher, International Aid/Development Worker, Police, Social Researcher and Social Worker, Charity Fundraiser, Human Resources Officer, Probation Officer and Public Relations Officer. Useful websites include the British Sociological Society, All About Careers, Prospects, and The Apprenticeship Guide.





## STUDENT PROFILE

# Anaum

### **PREVIOUS SCHOOL:**

Brighton & Hove High School

### **STUDYING AT BHASVIC:**

Classical Civilisation,  
Sociology, Politics A levels

BHASVIC has given me many opportunities via clubs and societies which makes college life more fun. Two that I have very much enjoy going to are the Law society and the Model United Nations. I was elected onto the Student Union at the end of my first year, taking the post of Health and Safety officer. The Student Union are responsible for running the Student Council which aims to ensure the student voice is represented to college managers. We also oversee clubs and societies, entertainment and events which help to raise money for charity. It's been a great way to meet people and work as part of a wider team.



# SPANISH: A LEVEL

## MINIMUM ENTRY REQUIREMENTS

4 in English Language GCSE and 6 in Spanish GCSE. To see overall entry requirements to study at BHASVIC refer to page 146.

## WHAT WILL I STUDY

You will learn to communicate fluently in the language both orally and in writing. You will read and listen to authentic material in order to develop your comprehension skills and to widen your knowledge of the culture. You will study topics relevant to the country/countries where the language is spoken.

## IS THIS COURSE RIGHT FOR ME

Did you enjoy the language at GCSE? Do you want to become fluent and develop your linguistic and cultural knowledge? Good linguists are risk takers and naturally inquisitive. At this level you need to be rigorous in your learning and very accurate in your application of knowledge. This course will develop your language skills while giving you an insight into cultural and political issues in the Hispanic World.

## WHERE NEXT

Language learning is inextricably bound up with History, Culture, Business and Economics. There are well attested advantages of speaking more than one language. Linguists are increasingly in demand in many sectors of industry. You may consider a degree purely in Languages / Linguistics / European Studies, leading to a wide variety of careers including, but not limited to, Translation, Interpreting, Teaching, Publishing, Journalism and Marketing. A language can also be combined with most subjects at Higher Education level, for example Law, International Relations, Politics, Media, Business or Sciences. Awareness of a foreign language is also an asset when applying for apprenticeships. Jobs where this is particularly useful are Cabin Crew, Travel Services, Customer Service and Relations, Events Assistants and Public Services. Useful websites to research careers and wider progression options could include Planit plus, All About Careers and The Apprenticeship Guide.

HARRAP

SPANISH

WITH 2000  
EXERCISES

www.harrap.co.uk  
Harrap Publishers and Suppliers



# SPORT: BTEC LEVEL 3 (SINGLE/DOUBLE)

## MINIMUM ENTRY REQUIREMENTS

4 in English Language GCSE or 4 in Maths GCSE. To see overall entry requirements to study at BHASVIC refer to page 146.

## WHAT WILL I STUDY

Within the sports course you will study a range of units over the two years which include Anatomy and Physiology, Fitness Testing and Training Programme and Exercise, Health and Nutrition. The course enables students to develop their knowledge of the different areas in sport in both a theoretical and practical way. Assessment is through both coursework and exams on the modules taught throughout the year.

## IS THIS COURSE RIGHT FOR ME

These courses are suited to students with good sport understanding and a keen interest in applying sport to a practical and theoretical situation. You must be a committed and independent learner with the personal management skills to meet coursework deadlines. Learning and assessment is varied to parallel workplace, apprenticeship and University style demands, with some external examination and coursework assessment. You will receive first-rate staff support for achieving excellent results, while enriching your study skills and personal development.

## WHERE NEXT

The course enables you to keep your options open whether you decide to go to University or pick up a career in the sporting industry. Some career possibilities include: Sports Coach, Teacher, Gym Instructor, Media Journalist and Nutritionist. You will gain invaluable transferable skills that will be key in any work place and give you the confidence to succeed.





# SPORT AND EXERCISE SCIENCES: BTEC LEVEL 3 (SINGLE/DOUBLE/TRIPLE)

## MINIMUM ENTRY REQUIREMENTS

4 in Maths GCSE and 4 in Science GCSE and 4 in English Language GCSE or English Literature GCSE. To see overall entry requirements to study at BHASVIC refer to page 146.

## WHAT WILL I STUDY

Sport isn't just about competing, it is about developing a knowledge of the impact sport can have on health, well-being and the human body. You will study the academic and vocational application of understanding and knowledge in diverse topics such as sport psychology, biomechanics, physiology, training and essential research methods and data analysis. Learning is partly through University laboratory visits and vocational specialist guest speakers. Whilst studying Sport and Exercise Science you will learn a range of skills that will help you in your future career, for example, teamwork, resilience, competitive spirit, social, communication and analytical skills.

## IS THIS COURSE RIGHT FOR ME

These are academically demanding courses suiting students with a good science understanding. You must be a committed and independent learner with the personal management skills to meet coursework deadlines. Learning and assessment is varied to parallel workplace and University style demands, with some external examination and coursework assessment. You will receive excellent staff support for achieving excellent results, while enriching your study skills and personal development.

## WHERE NEXT

Sport and Exercise Science lends itself to a range of careers in sports and fitness as well as other industries, for example, Nutritionist, Physiotherapy and Chiropractic Practice. Some careers that you could consider doing with PE include: Sports Science, PE Teacher, Physiotherapist, Professional Sports person, Sports Coach/Consultant, Sports Policy Adviser at local and national level, Diet and Fitness Instructor and Personal Trainer. Sport Science is the ninth most popular University route from BHASVIC, providing credible progression to both University degrees and the workplace.





# SPORTS PERFORMANCE: MEN'S BASKETBALL / FOOTBALL / RUGBY WOMEN'S BASKETBALL / FOOTBALL / NETBALL

## MINIMUM ENTRY REQUIREMENTS

You do not need to be taking a Sport course to be part of the sports performance programme. For most sports you need to be able to play at team / club standard but Women's Basketball is open entry. To see overall entry requirements to study at BHASVIC refer to page 146.

## WHAT WILL I STUDY

If you're a committed individual whose aim is to play regularly and to progress in sport then Sports Performance will benefit you during your time at BHASVIC. Throughout the duration of the course your qualified coach will provide you with the opportunity to compete at regional and national levels whilst also ensuring that you are able to thrive academically. Choosing Sports Performance enables you to develop your knowledge and enhance your skills as a sportsperson by training regularly and playing competitive games in your chosen sport, alongside your college courses.

## IS THIS COURSE RIGHT FOR ME

This is a practically based course in which all aspects of your own performance will be enhanced. During sessions you will work on the technical and tactical elements of your sport, with strength and conditioning sessions included to ensure you are able to reach your maximum potential as a BHASVIC athlete.

## WHERE NEXT

BHASVIC Sport gives you the tools to progress in sport in the direction you choose. Previous high achieving students have been offered University places in the UK and chances to study and play abroad through a sports scholarship.







# TEXTILE DESIGN: A LEVEL

## MINIMUM ENTRY REQUIREMENTS

No specific course entry requirements. To see overall entry requirements to study at BHASVIC refer to page 146.

## WHAT WILL I STUDY

Our grade one outstanding course in Textile Design has the emphasis on the expressive and experimental aspects of the Textiles medium. You study the processes, skills, concepts and ideas associated with textiles, art and design. This subject does not include traditional pattern cutting but does include making concept garments. A charge of £190 applies to contribute towards the cost of materials used during the two years of this course, bursaries and payment plans are available. You are given a generous allocation of colour printer credits per component of work and once you have used them up you top them up at your own expense.

## IS THIS COURSE RIGHT FOR ME

Are you ambitious, motivated and creative? Our Practical Portfolio component supported by 3000 word contextual study essay and Exam Unit will challenge you. You will learn block printing, batik, felt making, hand dyeing, weaving, concept garment making, and creative use of the PC using Photoshop to create designs and creative outcomes. Assessment will be by 60% practical portfolio and 40% practical exam.

## WHERE NEXT

As a textile design student, you can use your creative flair and ability to generate ideas and concepts to meet a brief. You will be given the opportunity to develop your ideas in a practical and supportive environment and will work both as part of a team and on independent projects. Students can progress to University, Art Foundation or apprenticeships and may go on to work in a variety of sectors (fashion and textiles design, styling, fashion marketing and business, interior design, textiles, merchandising and fashion communications). Jobs that are directly related to qualifications in Textiles Design could include: Clothing/Textile Technologist, Colour Technologist, Interior and Spatial Designer, Fashion Designer and Textile Designer. Jobs where Textiles Design would be useful could be: Teacher, Printmaker, Product Designer, Retail Buyer, Stylist and Visual Merchandiser. Useful websites could include Drapers, Creative Skillset, Creative Choices, All About Careers and The Apprenticeship Guide.



## STUDENT PROFILE

# Sally

### **PREVIOUS SCHOOL:**

Blatchington Mill  
School

### **STUDYING AT BHASVIC:**

Textiles, Business, English  
Language and Literature A  
levels

I decided to study at BHASVIC because of the variety of creative and academic subjects on offer. It's character building to come to somewhere new and the teachers here really help you to develop your independence. The social side of life here helps you to build a great set of wider skills. You're trusted and treated with respect by teachers. After BHASVIC I plan to study Design and Communication at Manchester Metropolitan University with one year spent in industry. Long term I plan to pursue a career in Fashion Couture and eventually run my own fashion brand.

# Entry Requirements

The college's entry requirements are **subject to change up to the 1st November** prior to the application deadline, which is the first Friday in December. We ask all applicants to re-check our entry requirements **on our website** in November, before completing an application to the college.

The college is open to all applicants who are able to cope with and benefit from a course of study that we offer. If we cannot offer anything suitable, we will tell you.

## **NORMAL ENTRY REQUIREMENTS FOR 16+ APPLICANTS FOR ADVANCED (LEVEL 3) PROGRAMMES:**

Three A levels or equivalent will be the normal requirement for entry to Higher Education and as such the majority of BHASVIC students will enrol on such a study programme. The BTEC programme below provides diploma qualifications which are equivalent to A levels. Double diplomas are equivalent to two A levels. Online tariff charts provided by 'UCAS' can be used to ascertain grade equivalency.

Only full GCSE qualifications count for BHASVIC entry requirements. Qualifications which the college considers to be GCSE equivalents, such as full Level 2 BTECs and iGCSEs, count as one, single GCSE equivalent, whether they are single or double qualifications. Short GCSEs and short Level 2 courses will not count towards entry requirements. It is not possible to provide

At BHASVIC we call all the subjects you are following your Study Programme. When you apply to the college you will be applying for individual subject courses within a Study Programme. Any offers made to you will therefore be dependent on you meeting two sets of entry requirements:

- Entry requirements for your overall Study Programme: please refer to the table on page 147.
- Entry requirements for your individual courses: please refer to the individual course pages in this prospectus.

a definitive list of all qualifications which the college will accept in lieu of a GCSE and if you are studying alternative qualifications we advise that you check these with our Admissions Team prior to submitting your application.

Students who have not already achieved grade 4 in English Language or Maths GCSE must continue to study a resit course alongside other subjects. Students who have a 4 in English Literature but not English Language are advised to consult carefully with an enrolment advisor or contact Admissions after GCSE Results Day in August.

If you are an E.U. resident and have not attended an international school you will be required to have an IELTS Academic score of 5.5 in order to take any Level 3 course at BHASVIC.

## MINIMUM ENTRY REQUIREMENTS FOR STUDY PROGRAMMES

**BTECs**  
(all A level equivalents)

**Five GCSEs at grade 4 or above in five different subjects. This must include a minimum of grade 4 in English Language GCSE or Maths GCSE.**

This study programme is made up of three single blocks of L3 study, at least one of which will be a BTEC / WJEC Level 3 qualification (for example, an A level and a double BTEC, two single BTECs and an A level, a triple BTEC, etc). All L3 qualifications are A level equivalent at BHASVIC.

**3 A levels**

**Six GCSEs, with a minimum of five grade 4 and one grade 6. These must be in a minimum of five different subjects. This must include a minimum of grade 4 in English Language GCSE or Maths GCSE.**

This study programme is made up of three single blocks of L3 study (for example, two A levels and a single BTEC, three A levels, etc). We will discuss with you at interview and enrolment whether three A levels or two A levels and a single BTEC is most suitable for you, depending on your GCSE grades.

**4 A levels**

**A minimum of four grade 8s and three grade 7s in seven different subjects, including a minimum of grade 6 in Maths GCSE and English Language GCSE.**

This study programme is made up of four single blocks of L3 study and is normally four A levels. We will discuss this in detail with you at interview and enrolment, including options to study an Extended Project.

**Double Maths:** Students studying Double Maths A level may wish to take two additional A level courses alongside their Maths, to enable them to acquire three different subjects. We will discuss this with applicants individually at interview but as a guideline, we would advise having a minimum of four grade 7s and three grade 6s at GCSE to study Double Maths and two other A levels.

### **COURSE ENTRY REQUIREMENTS AT BHASVIC**

It is expected that if you have studied a subject at GCSE that you wish to continue at A level, you must have gained at least Grade 4, or if you have taken the Higher Diploma (Level 2) you need to have passed your Principal Learning with at least a Pass or Grade 4.

For GCSEs which have a letter as a final grade (such as iGCSEs) the conversions are: C=4 or 5, B=6, A=7 or 8, A\* = 9.

Please refer to individual course pages in this prospectus and on our website for full course details.

### **CHARGES AND ASSISTANCE (SEE WEBSITE FOR FURTHER INFORMATION)**

The 16-19 bursary is aimed at providing the most vulnerable young people with a specific level of financial support. The college is able to use its discretion to award monies from the Bursary Fund in ways that best fit the needs and circumstances of individual students. This could include providing help with travel, books or other course related

costs. BHASVIC will look to target support to those young people facing the greatest financial barriers to participation e.g., to a student's family who received free school meals, those on a means-tested benefit or who fall into a priority group. Application forms are available from the Student Services Centre.



# Second Year Portfolio Courses

In your second year at BHASVIC you will be able to take an additional course to supplement your learning. Some of these courses do not lead to a qualification, others give you an additional, nationally recognised qualification. Portfolio courses are designed and delivered by highly specialised and experienced teachers who know exactly what sixth form students need and wish to learn. The courses help enhance your knowledge and experience to give you the edge in your future plans and applications. The range of courses on offer varies each year; the list below shows a typical selection:

PORTFOLIO COURSES	• Anthropology	• Film Club	• Mind and Movement
	• Archaeology	• Financial Education Award Level 2	• Mindfulness
	• Basketball Performance - Men	• Fitness Instructing	• Mobile App Development
	• Basketball Performance - Women	• Football Performance - Men	• Music Theory
	• BHASVIC TV	• Football Performance - Women	• Netball Performance
	• Biology Skills - the Crest Award	• French for Beginners	• Nutrition
	• Bluffers Guide to Politics	• Geographical Skills for University	• Philosophy for Beginners
	• British Sign Language	• Geology	• Photography for Beginners
	• Contemporary Tech	• Graphics	• Photography for Photographers
	• Creative Writing	• History for University	• Record Production
	• Criminology	• Interactive Media	• Rugby Performance
	• Digital and Print journalism	• International Development	• Science for Society
	• Digital Art	• Italian for Beginners	• Songwriting
	• Drawing for Textiles	• Journalism	• Spanish for Beginners
	• Duke of Edinburgh Award	• Learning the Law	• Sports Leadership (Higher) Certificate Level 3
	• EPQ Artefact	• Life Drawing	• Student Union
	• EPQ Dissertation	• Maths (Further) AS level	• Wellbeing Peer Mentoring
	• EPQ Perspectives on Science	• Maths for Chemistry Support	• Young Enterprise
	• Equality, Environment and the Future	• Maths for Physics Support	

# The BHASVIC Timetable

At college you can divide your time between timetabled lessons, tutorial, private study and socialising. You will have lessons for a minimum of 13.5 hours a week plus tutorial time (and enrichment if you opt for it). Outside lessons you should spend a further 13 hours on private study and homework across your courses per week. Working for up to eight hours a week in part-time employment is very positive but any more than this is likely to negatively affect your studies and achievement.

	MONDAY	TUESDAY	WEDNESDAY	THURSDAY	FRIDAY
8.30	<b>A</b> 8.30-10.00	<b>E</b> 8.30-10.00	<b>C</b> 8.30-10.00	<b>F</b> 8.30-10.00	<b>D</b> 8.30-10.00
8.45					
9.00					
9.15					
9.30					
9.45	<b>BREAK</b>				
10.00	<b>BREAK</b>				
10.15	<b>B</b> 10.15-11.45	<b>F</b> 10.15-11.45	<b>D</b> 10.15-11.45	<b>G</b> 10.15-11.45	<b>C</b> 10.15-11.45
10.30					
10.45					
11.00					
11.15					
11.30	<b>LUNCH</b> 11.45-12.30				
11.45	<b>LUNCH</b> 11.45-12.30				
12.00	<b>LUNCH</b> 11.45-12.30				
12.15	<b>LUNCH</b> 11.45-12.30				
12.30	<b>C</b> 12.30-14.00	<b>G</b> 12.30-14.00	<b>B</b> 12.30-14.00	<b>E</b> 12.30-14.00	<b>F</b> 12.30-14.00
12.45					
13.00					
13.15					
13.30					
13.45	<b>BREAK</b>				
14.00	<b>BREAK</b>				
14.15	<b>D</b> 14.15-15.45	<b>A</b> 14.15-15.45	<b>E</b> 14.15-15.45	<b>A</b> 14.15-15.45	<b>G</b> 14.15-15.45
14.30					
14.45					
15.00					
15.15					
15.30	<b>5 MINUTE BREAK</b>				
15.45	Meeting/Training Slot	<b>B</b> 15.50-17.20	Sport/Enrichment	Meeting/Training Slot	Meeting/Training Slot
16.00					
16.15					
16.30					
16.45					
17.00					
17.15					
17.30					

Note: The timetable structure is subject to change year on year and the above is for illustrative purposes only.



# Applying to BHASVIC

We welcome applications from students irrespective of their disability, family responsibility, marital status, race, colour, ethnicity, nationality, religion or belief, gender or sexual orientation. BHASVIC, Brighton MET and Varndean College together form the Accord Colleges in Brighton and Hove. The three colleges have a coordinated application process for students seeking to study at any of the Accord Colleges.

Under the Accord, you will not be able to make an application to both BHASVIC and Varndean College. This is so that these two sixth form colleges can effectively plan curriculum provision to cater for as many students wishing to study in one of these colleges as possible. You are welcome to make an application to one of these two Sixth Form Colleges and also to Greater Brighton Metropolitan College (includes Brighton MET and Northbrook MET).

You are also entirely free to apply to any other educational institution – it is only in the case of BHASVIC and Varndean College that you are not able to apply to both colleges. An Accord College is likely to ask you, at interview, about any other applications you have made or offers you hold from other educational institution, employer or training provider.

In the event of oversubscription, we will offer places to students in the order specified in our Admissions Policy which is available from the college and on the BHASVIC website. If BHASVIC is oversubscribed, we will give priority to students whose application forms reach the college on or before the first Friday in December by 5pm.

**For any matters concerning applications, please contact Denise Mansfield (Admissions Manager) at the College; [admissions@bhasvic.ac.uk](mailto:admissions@bhasvic.ac.uk) or telephone 01273 859810.**



# Summary of the Application Process

## SEPTEMBER 2019 START PLANNING

Start planning early! This time next year you could be a BHASVIC student, so think ahead. Make the most of information in this prospectus and on our website, along with information sessions at your school. Start to get an idea of what courses you think you might want to do, what the entry requirements are and what qualifications you need to have to get into future degree courses or careers you might have in mind.

## DECEMBER 2019 APPLICATION DEADLINE

Make sure your application is submitted by the first Friday in December by 5pm, to be considered a priority applicant.

## NOVEMBER 2019 OPEN EVENINGS

There are two Open Evenings in November for prospective students and parents to visit the college. These give you a fantastic opportunity to see the college and facilities, to hear from the Principal about the college's ethos and culture and to visit departments and find out more about the courses you are interested in. You will also get a chance to speak to lots of current students who will be the best source of information on what college is really like!

## NOVEMBER 2019 – EASTER 2020 INTERVIEWS AND OFFER LETTER

If you are a UK student and we have received your application form by the first Friday in December by 5pm, you will normally be given an admissions interview at the college. We consider your current progress by looking at your most recent school report and attendance, and discuss your intended programme of study, entry conditions and future career. If we are able to make you an offer, we will normally do so within two weeks of your interview (although students who are interviewed before Christmas will not receive an offer until January). You must accept your offer of a place at BHASVIC within two weeks of receiving an offer letter.

## **JULY 2020**

### **MOVING ON DAY FOR STUDENTS NEW PARENTS INDUCTION EVENINGS**

Once you have accepted your place at the college, you will be invited to our Moving On day in late June or early July (as soon as GCSE exams have finished) when you come to have induction lessons and confirm your course choices. We also run Parents' Induction evenings where parents can find out more about our guidance and support systems.

## **AUGUST – SEPTEMBER 2020**

### **RESULTS AND ENROLMENT**

When you receive your GCSE results in August, we can offer you advice via our Results Advisory Service. At the very end of August or beginning of September you will have an enrolment interview to finalise your course ready for you to become an official BHASVIC student.

## **SEPTEMBER 2020**

### **INDUCTION**

Around the second week in September our full teaching timetable will start and you will begin your time as a student with an induction session which will ensure you know everything you need to know to make the best start here at BHASVIC.

# Course List

Course	Qualification	Page Number
Art (Fine Art)	A	40
Biology	A	42
Business (Various)	A / BTEC	44
Chemistry	A	48
Classical Civilisation	A	50
Computing (Various)	A / BTEC	52
Creative Digital Media Production	BTEC	56
Criminology	WJEC	60
Dance	A	62
Drama and Theatre Studies	A	64
Economics	A	66
English (Various)	A / GCSE	68
Environmental Science	A	76
Extended Project		78
Film Studies	A	80
French	A	82
Geography	A	84
German	A	86
Graphic Design and Communication	A	88
Health and Social Care	BTEC	90
History	A	92
History of Art	A	94
IT	BTEC	96
Law (Various)	A / BTEC	98
Mandarin	Cambridge Pre-U	102
Maths (Various)	A / GCSE	104
Media Studies	A	110
Music (Various)	A / BTEC / Grades 5-8	112
Performing Arts	BTEC	118
Philosophy	A	120
Photography	A	122
Physical Education	A	124
Physics	A	126
Politics	A	128
Psychology	A	130
Religious Studies	A	132
Sociology	A	134
Spanish	A	136
Sport (Various)	BTEC	138
Textile Design	A	144


## CONTACT INFORMATION

General Enquiries:  
Telephone: 01273 552200  
Fax: 01273 563139  
Website: [www.bhasvic.ac.uk](http://www.bhasvic.ac.uk)

Admission Enquiries:  
Admissions/Schools Liaison Manager: Denise Mansfield  
Admissions Direct line: 01273 859810  
Admissions Email: [admissions@bhasvic.ac.uk](mailto:admissions@bhasvic.ac.uk)

## HOW TO FIND US

Brighton Hove & Sussex  
Sixth Form College  
205 Dyke Road  
Hove BN3 6EG

 /Bhasvic.ac.uk

 @BHASVIC



Train Station

BHASVIC

All contents copyright 2019 BHASVIC.

All contents correct at time of going to press. The college reserves the right to amend any aspect of its course provision without prior notice.

bhasvic.ac.uk

