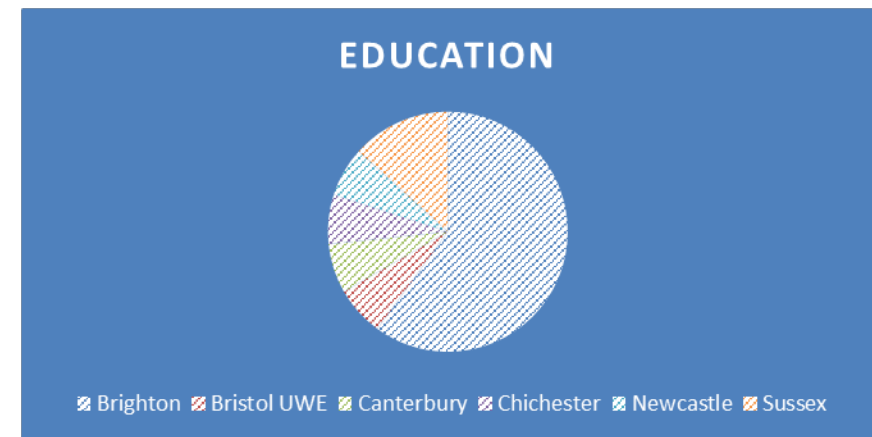
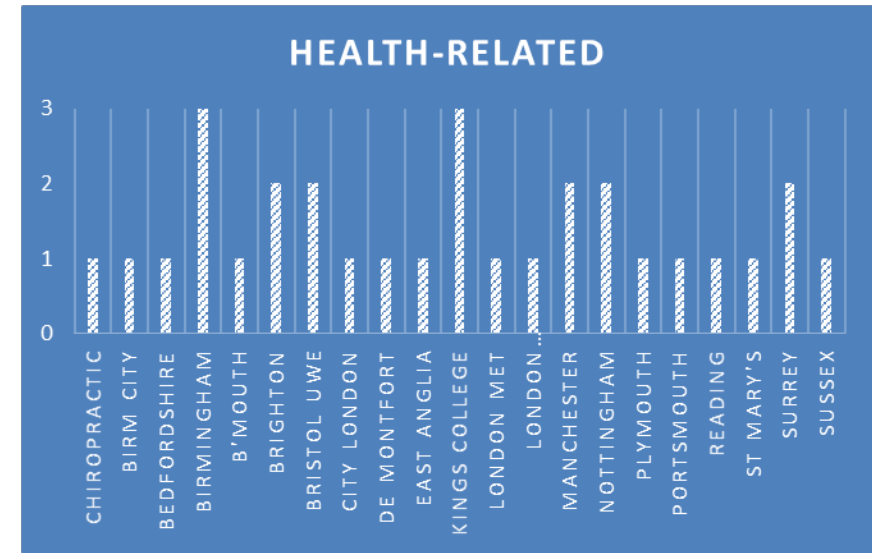


# Health & Social Care

## Higher Education at BHASVIC

**In Sept 2018, 15 students went onto study teaching degrees at 6 different universities, 30 students went onto study wider healthcare-related degrees**

**Health & Social Care BTEC is an ideal qualification for those students thinking of studying for a health-care, social work or teaching related degree. It encompasses theory with practical skills and work experience.**



**A health studies or education degree helps you develop the skills to follow a career in health, social care, leisure or teaching**

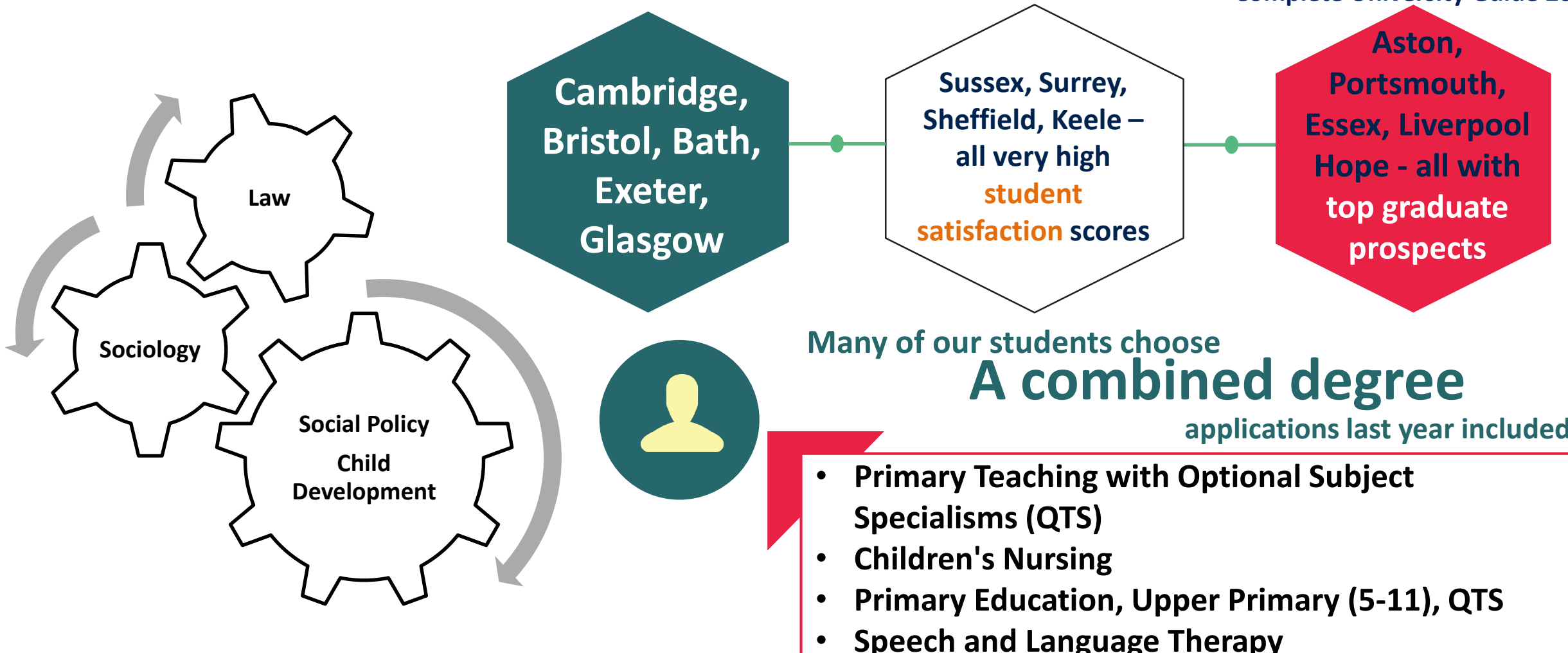
**Jobs where a Health / Education degree would be useful include:**

- Further education teacher
- Health promotion specialist
- Medical sales representative
- Counsellor
- Personal trainer
- Physician associate



## Top 10 Universities for Health / Education

Complete University Guide 2019



Why not try a foundation degree..

**Kingston**  
(primary teaching)  
**BBC** (A level)  
**DMM** (BTEC)

**Portsmouth**  
(adult nursing)  
**BCC** (A level)  
**MMM** (BTEC)

**Bristol UWE**  
(social work)  
**BBB** (A level)  
**DMM** (BTEC)

**Birmingham City**  
(paramedic science with foundation year)  
**CCC** (A level)  
**MMM** (BTEC)

.....or higher / degree apprenticeships

**Health and Social Care Apprenticeships**  
Gateway qualifications  
.org.uk

A level grades or BTEC equivalents